

[www.visionaryhomes.com](http://www.visionaryhomes.com)


## Aberdeen

3 Elevations Available

 2,501 Total Sq.Ft.

 4 Bedrooms

 2.5 Bathrooms

 2 Car Garage

The Aberdeen floor plan showcases a stylish and functional design with an open concept layout, flex room off entry, mudroom and half bath near garage, and a walk-in pantry within the kitchen. With 4 bedrooms, 2.5 baths, and a 2-car garage, this floor plan offers you and your family a space you'll love. Upstairs you'll discover a loft space, spacious owner's suite and bath, convenient upstairs laundry, bedrooms, and a bathroom.



Craftsman



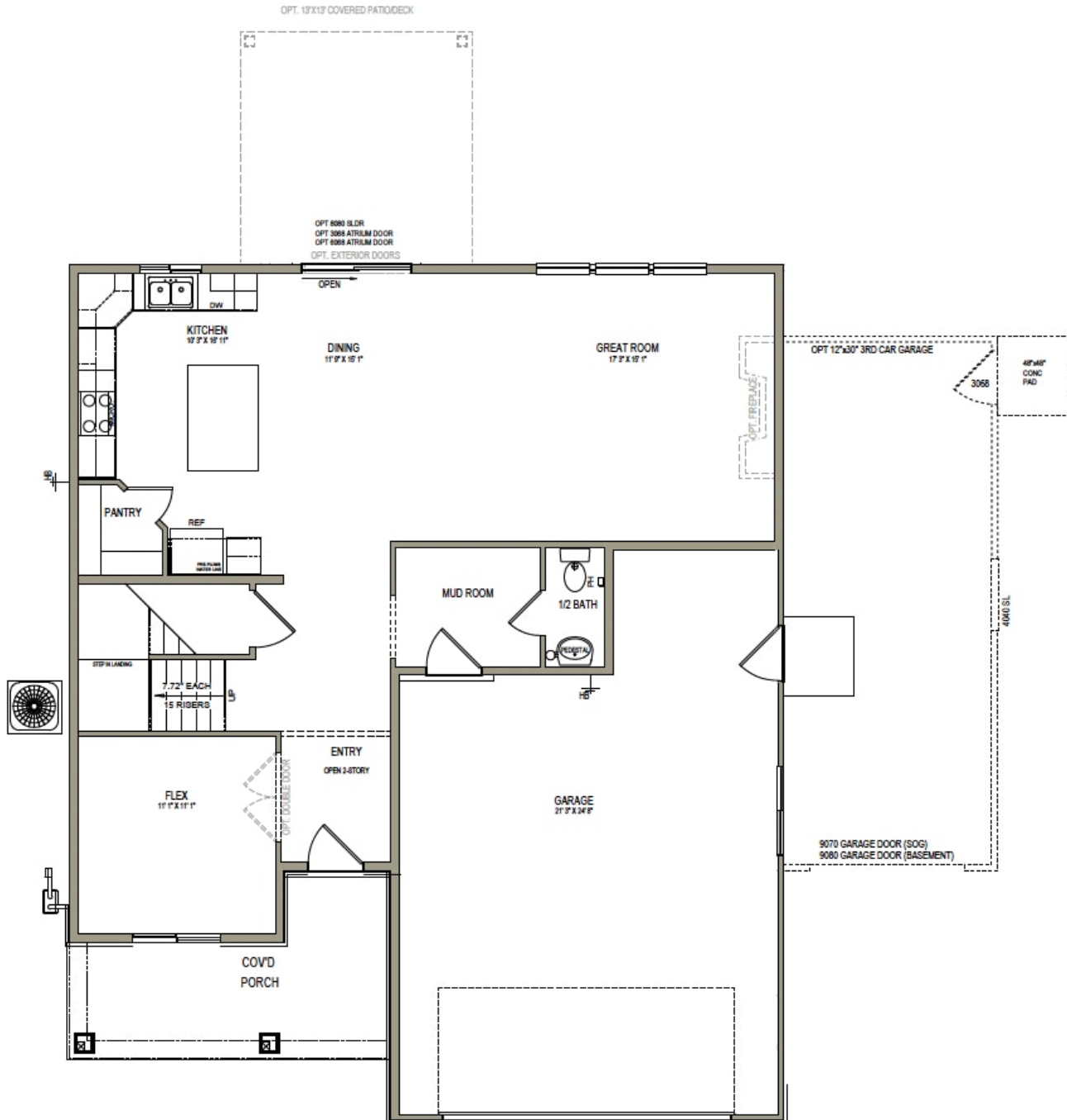
Farmhouse



Traditional w/Stucco

www.visionaryhomes.com

## MAIN LEVEL - SLAB ON GRADE

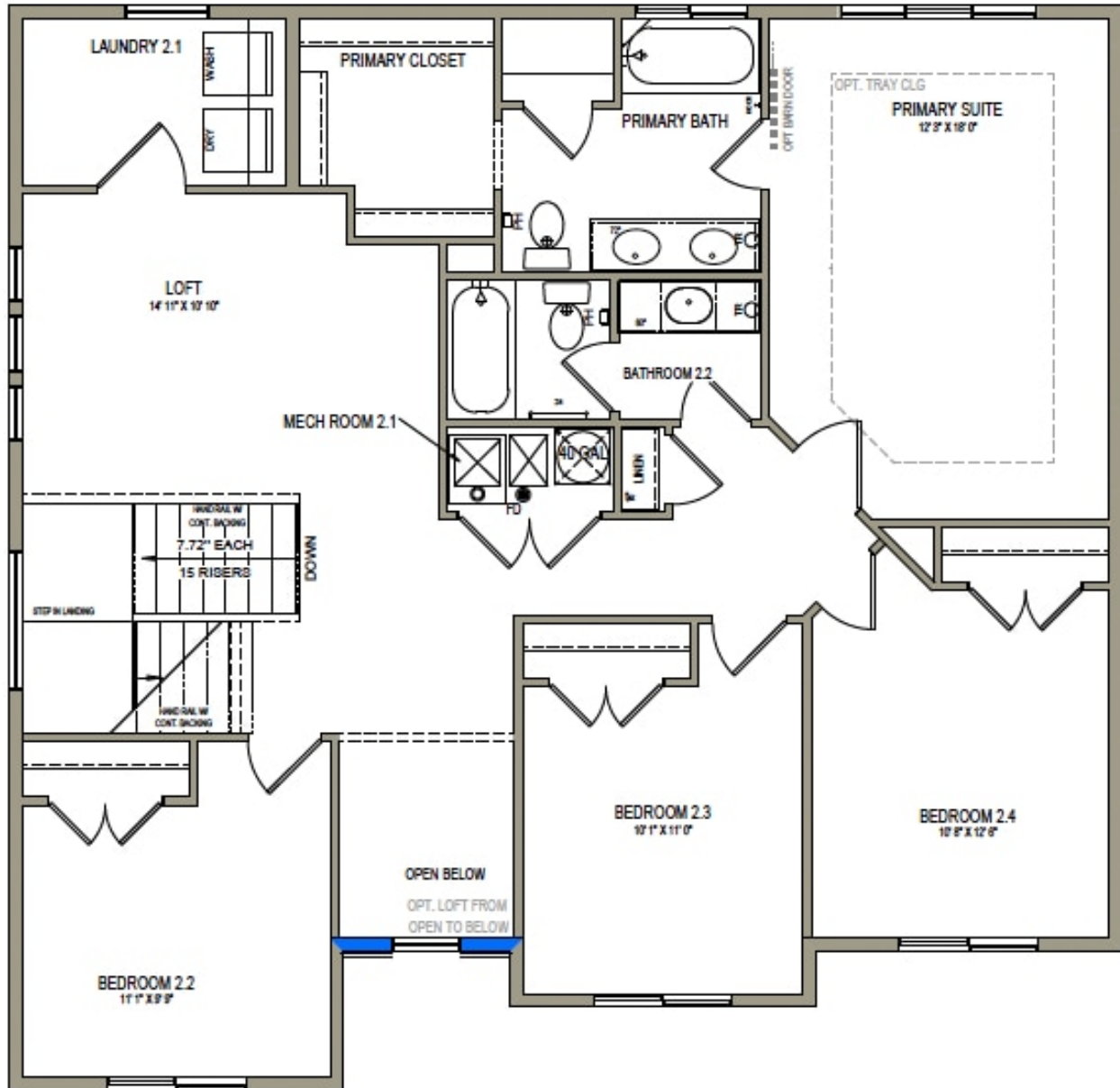


\*Visionary Homes reserves the right to change prices without notice.  
Approximate square footage and options shown in plan may not be included in base price.

435.228.4702  
visionaryhomes.com

[www.visionaryhomes.com](http://www.visionaryhomes.com)

## UPPER LEVEL



\*Visionary Homes reserves the right to change prices without notice.  
Approximate square footage and options shown in plan may not be included in base price.

**435.228.4702**  
[visionaryhomes.com](http://visionaryhomes.com)