

www.visionaryhomes.com


Madison

3 Elevations Available

 1,873 Total Sq.Ft.

 1,873 Finished Sq.Ft.

 No Basement

 3 - 4 Bedrooms

 2.5 Bathrooms

 2 - 3 Car Garage

The Madison floor plan features 3 bedrooms and 2.5 bathrooms with an open-concept main living area and large windows that provide plenty of natural light. A walk-in pantry in the kitchen offers lots of space for kitchen essentials and food. Step upstairs to discover a loft area with a view of the main floor, which creates an open and airy feel to the home. And embrace ultimate relaxation in your primary suite with a walk-in closet and ensuite bathroom. This beautiful floor plan also features a mud room adjoining the garage, perfect for organizing shoes, bags, and coats to make every trip outside easy, and every trip home that much more welcoming.



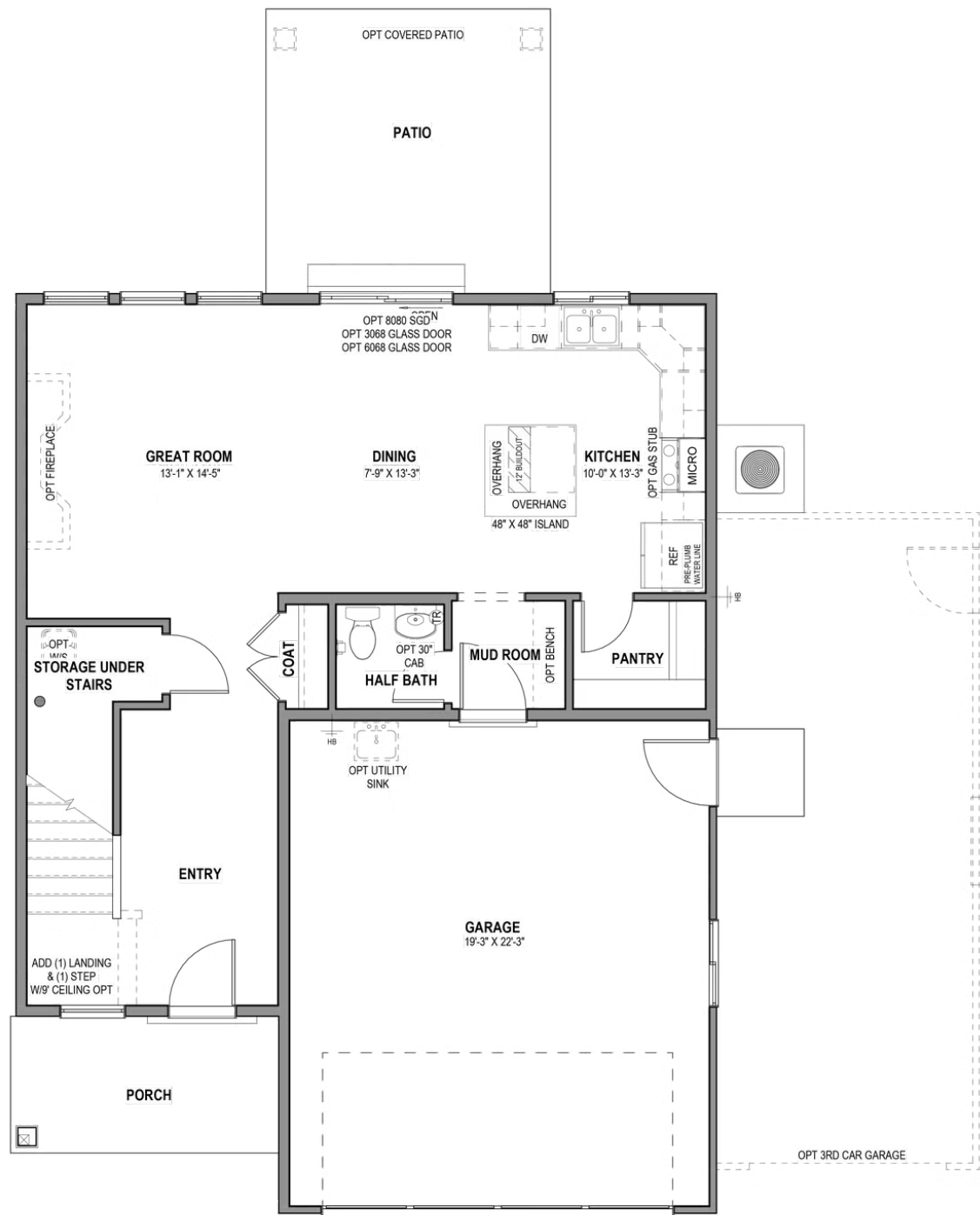
*Visionary Homes reserves the right to change prices without notice. Approximate square footage and options shown in plan may not be included in base price.

435.228.4702
visionaryhomes.com



www.visionaryhomes.com

MAIN LEVEL - SLAB ON GRADE

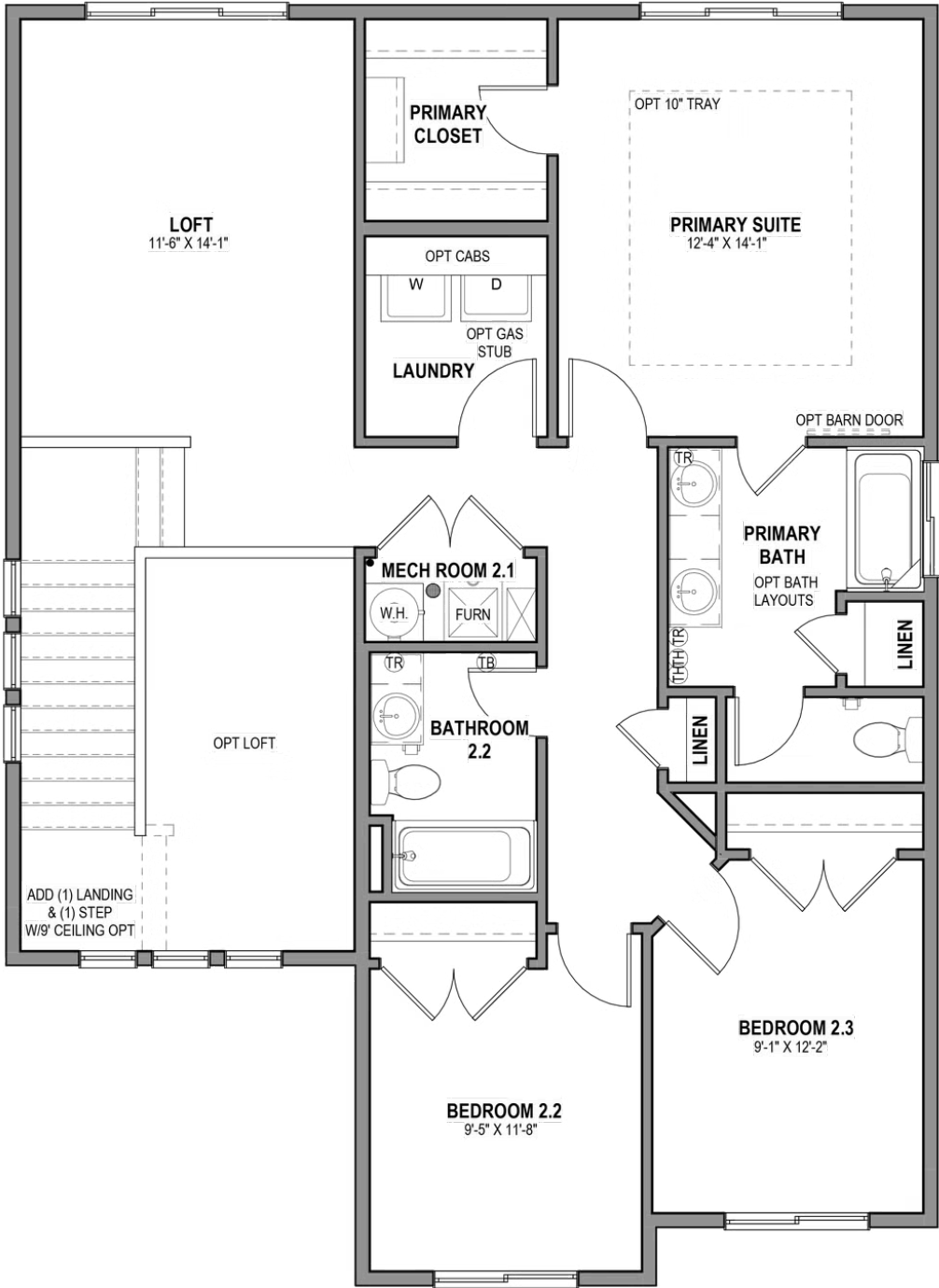


*Visionary Homes reserves the right to change prices without notice. Approximate square footage and options shown in plan may not be included in base price.



www.visionaryhomes.com

UPPER LEVEL



*Visionary Homes reserves the right to change prices without notice. Approximate square footage and options shown in plan may not be included in base price.