

[www.visionaryhomes.com](http://www.visionaryhomes.com)


## Saddlewood

3 Elevations Available

 1,818 Total Sq.Ft.

 1,818 Finished Sq.Ft.

 No Basement

 3 Bedrooms

 2.5 Bathrooms

 2 - 3 Car Garage

Step into the timeless charm and practicality of the Saddlewood floor plan, thoughtfully designed to accommodate your growing family's needs for years to come. Featuring 3 bedrooms and 2.5 bathrooms, The Saddlewood 2-story floor plan has an open-concept main living space. The family room, kitchen, and dining area seamlessly blend together to create a warm and inviting atmosphere that fosters a sense of family connection and can accommodate many guests. At the top of the stairs a loft space is open to the entrance below for more additional light and an airy ambiance. Enjoy the spacious primary bedroom upstairs with its large windows, gorgeous primary bath, and spacious walk-in closet.



\*Visionary Homes reserves the right to change prices without notice. Approximate square footage and options shown in plan may not be included in base price.

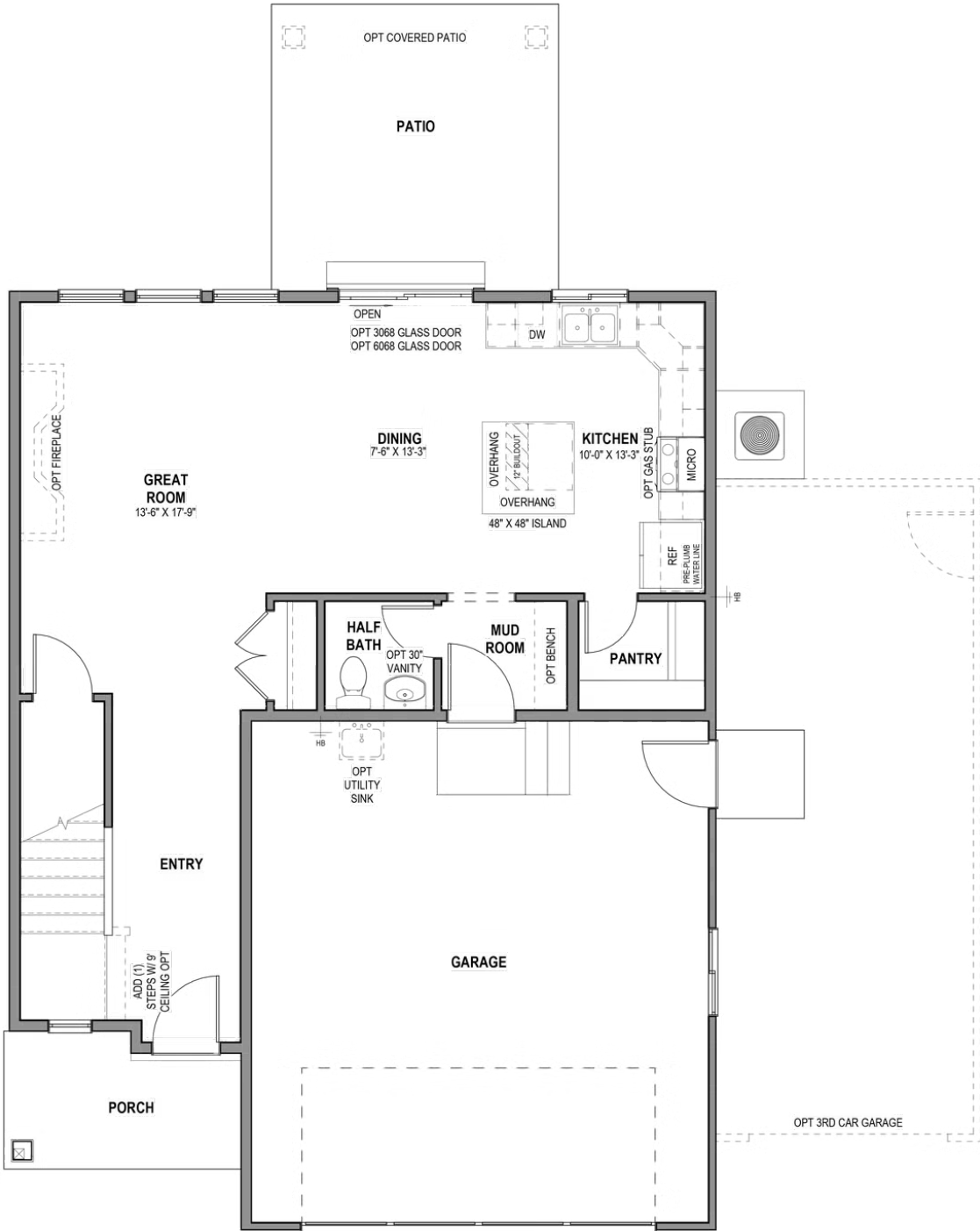
**435.228.4702**  
[visionaryhomes.com](http://visionaryhomes.com)





www.visionaryhomes.com

MAIN LEVEL - SLAB ON GRADE

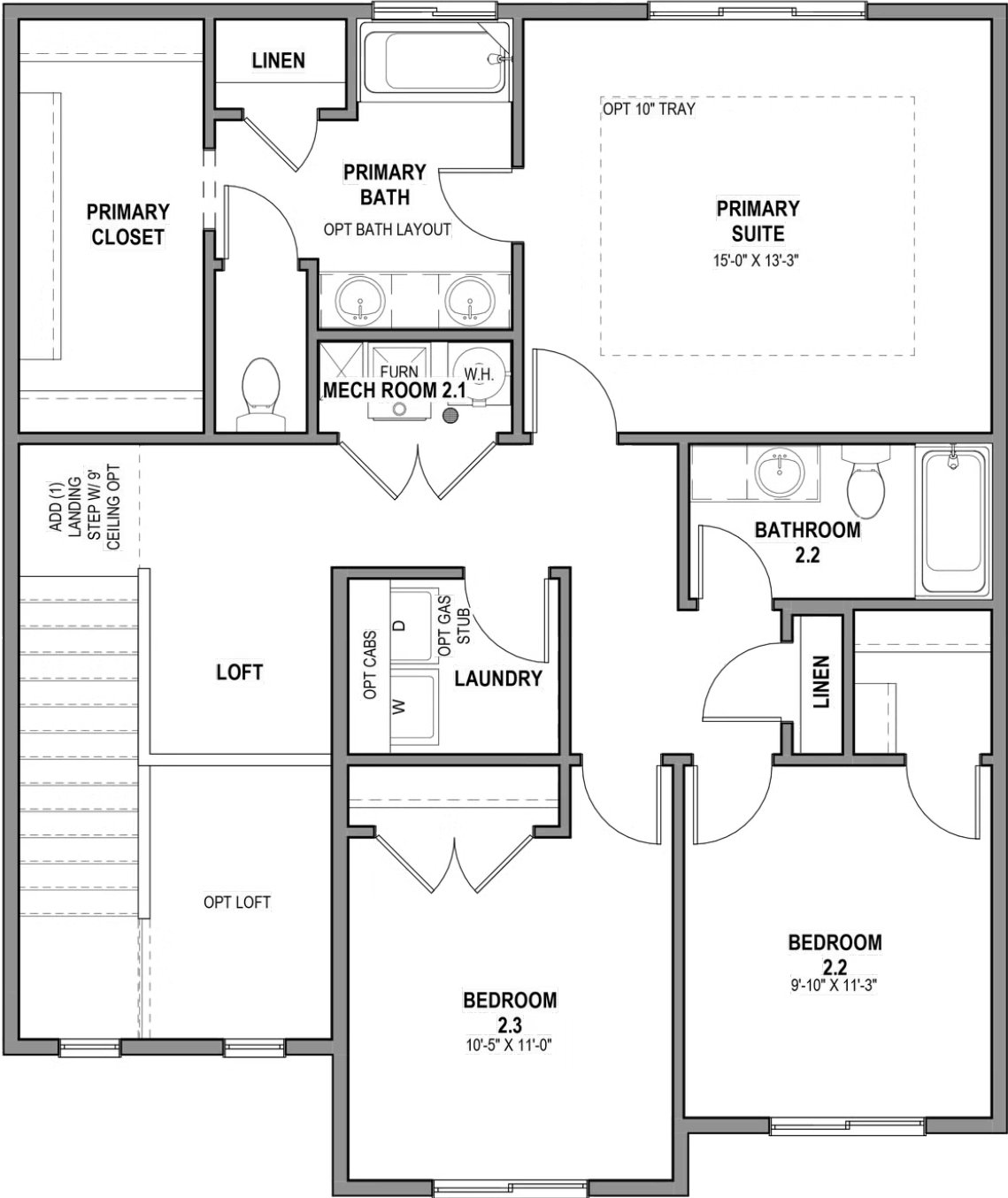


\*Visionary Homes reserves the right to change prices without notice. Approximate square footage and options shown in plan may not be included in base price.



www.visionaryhomes.com

UPPER LEVEL



\*Visionary Homes reserves the right to change prices without notice. Approximate square footage and options shown in plan may not be included in base price.