

[www.visionaryhomes.com](http://www.visionaryhomes.com)


## Westminster

3 Elevations Available

 1,658 Total Sq.Ft.

 1,658 Finished Sq.Ft.

 No Basement

 3 Bedrooms

 2.5 Bathrooms

 2 - 3 Car Garage

The Westminster floor plan is designed to accommodate your family's needs for years to come. The open-concept main living space of the kitchen, dining, and family room brings loved ones together. Whether it's savoring morning coffee or unwinding after a long day, this versatile area provides the ideal backdrop for every beautiful ordinary moment with family and friends. Upstairs, discover the serenity and privacy of the spacious primary bedroom featuring a beautiful primary bath and a large walk-in closet. The upper level also includes two more bedrooms, a full bath in the hallway, and a conveniently situated laundry room.



\*Visionary Homes reserves the right to change prices without notice. Approximate square footage and options shown in plan may not be included in base price.

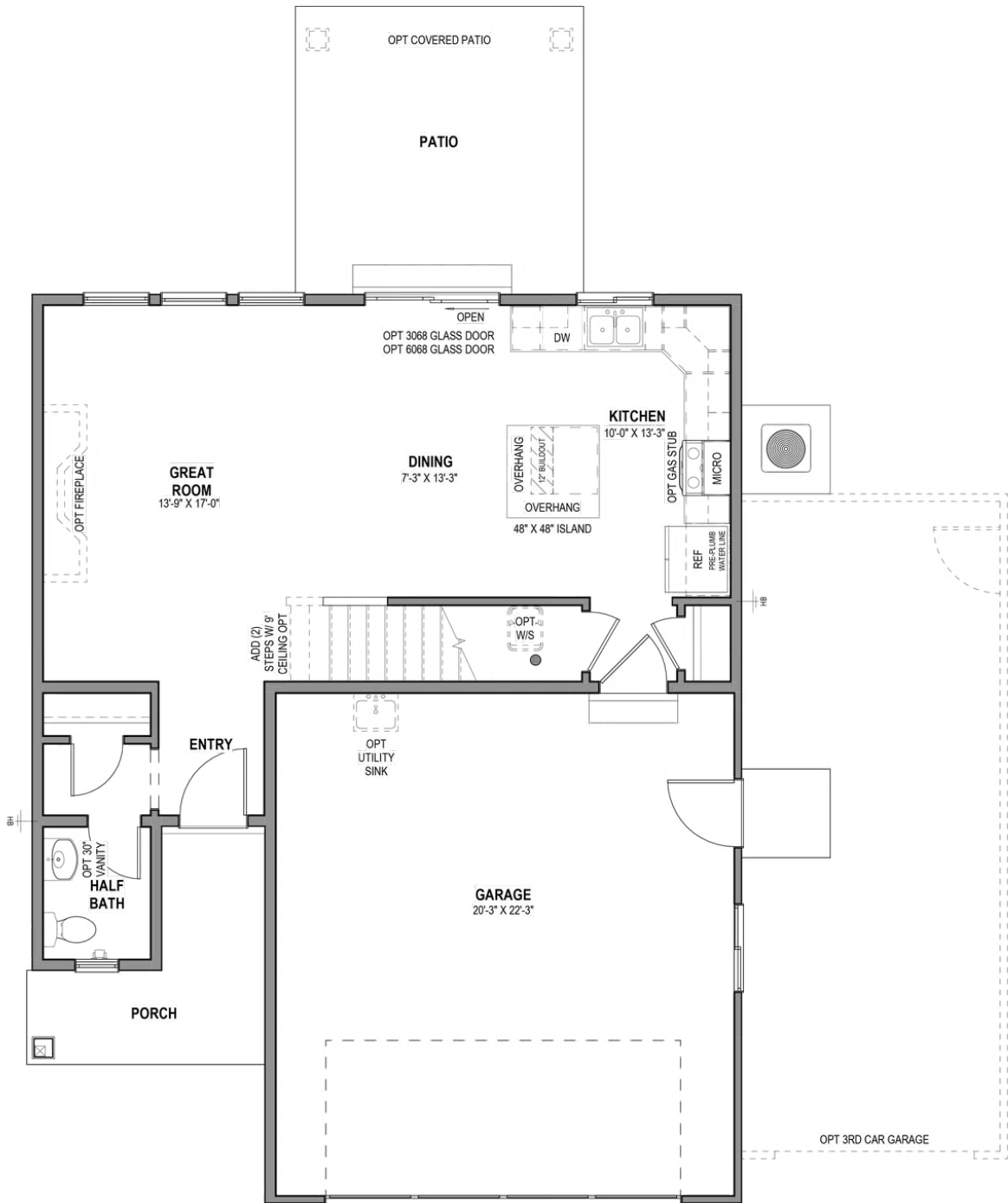
**435.228.4702**  
[visionaryhomes.com](http://visionaryhomes.com)





www.visionaryhomes.com

MAIN LEVEL - SLAB ON GRADE

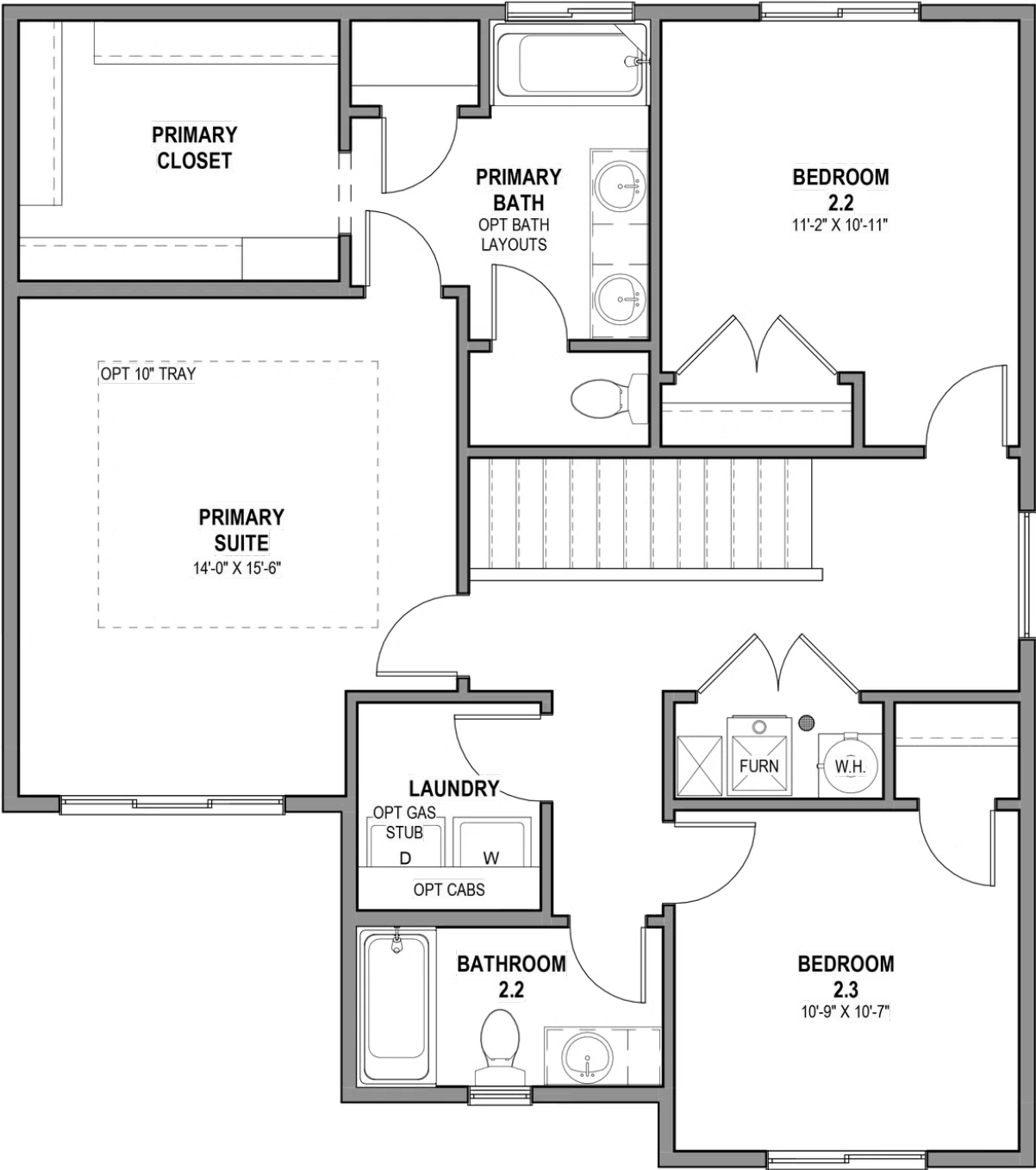


\*Visionary Homes reserves the right to change prices without notice. Approximate square footage and options shown in plan may not be included in base price.



www.visionaryhomes.com

UPPER LEVEL



\*Visionary Homes reserves the right to change prices without notice. Approximate square footage and options shown in plan may not be included in base price.