








www.visionaryhomes.com



Aberdeen

3 Elevations Available

-  2,430 Total Sq.Ft.
-  2,430 Finished Sq.Ft.
-  4 Bedrooms
-  2.5 Bathrooms
-  2 - 3 Car Garage

With an open concept layout, 4 bedrooms, 2.5 bathrooms, and a 2-car garage, the Aberdeen is perfect for you and your family. The Aberdeen also includes a flex room off the entry, a mudroom and a half bath near garage, as well as walk-in pantry within the kitchen. Upstairs you'll discover a loft space, spacious primary bedroom and bath, convenient upstairs laundry, bedrooms, and a bathroom. You and your family will love each of life's moments in this uplifting, spacious layout!

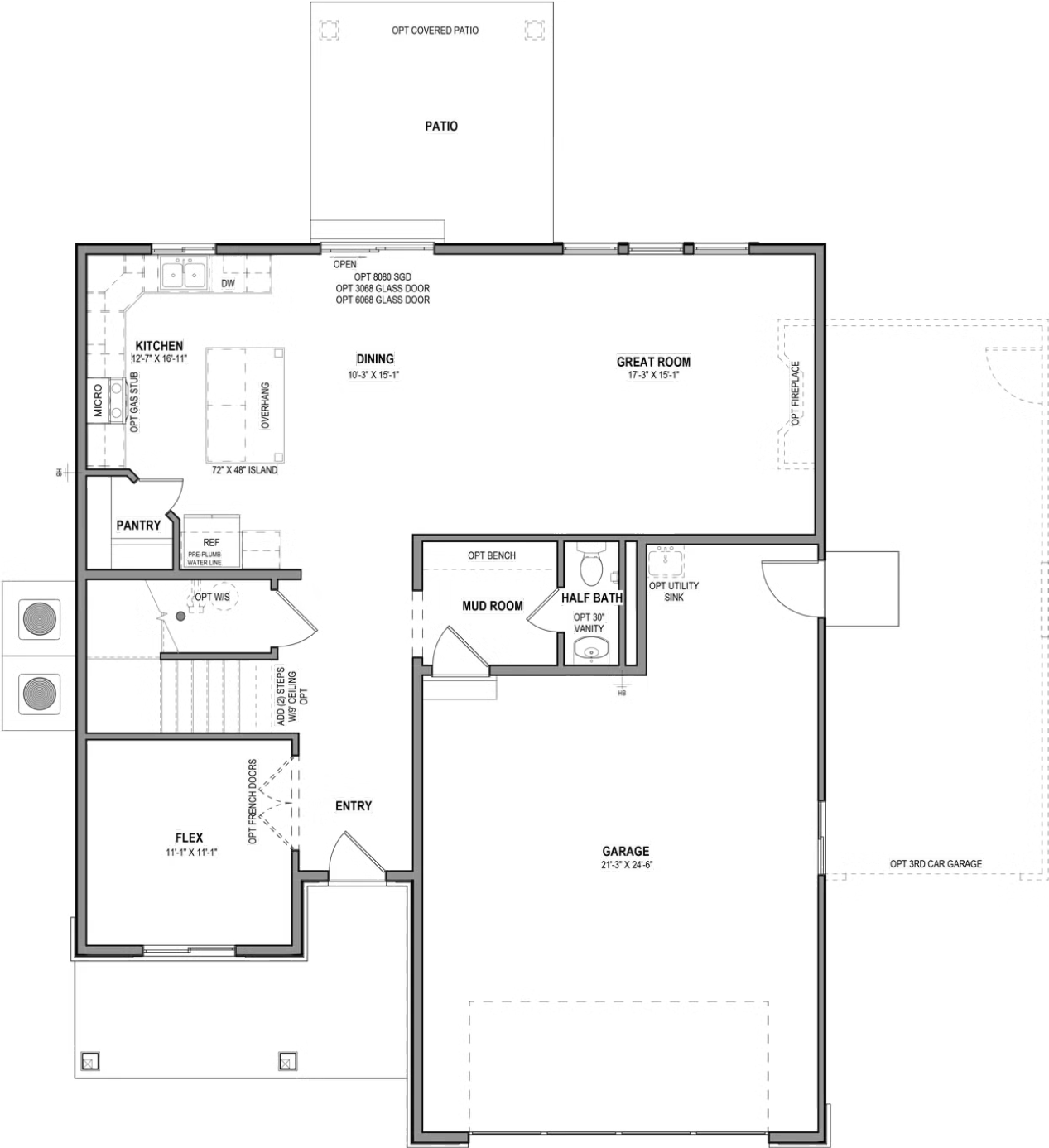


*Visionary Homes reserves the right to change prices without notice. Approximate square footage and options shown in plan may not be included in base price.



www.visionaryhomes.com

MAIN LEVEL - SLAB ON GRADE

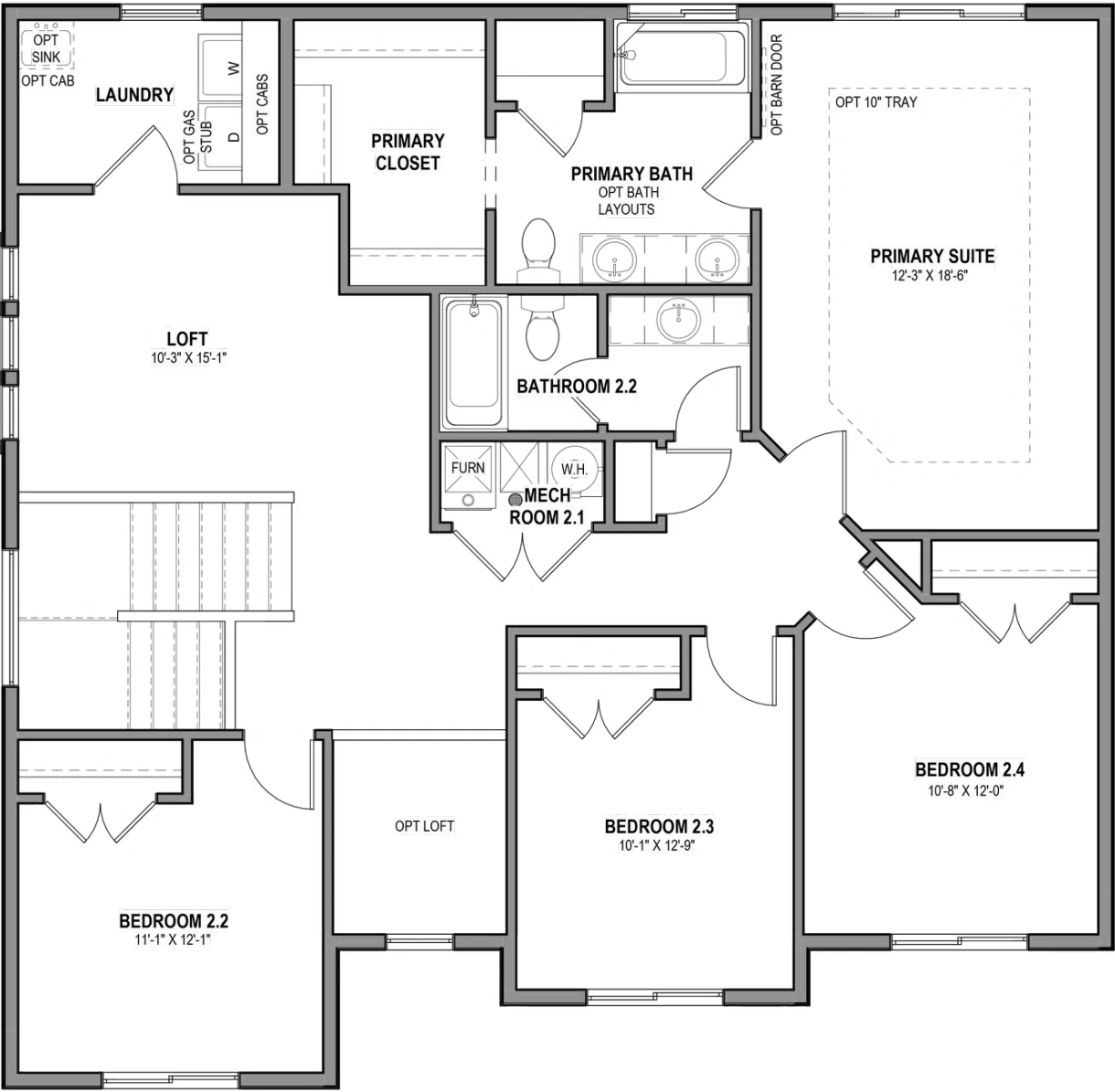


*Visionary Homes reserves the right to change prices without notice. Approximate square footage and options shown in plan may not be included in base price.



www.visionaryhomes.com

UPPER LEVEL



*Visionary Homes reserves the right to change prices without notice. Approximate square footage and options shown in plan may not be included in base price.