



Priced From
\$635,900

1 Elevations Available

 2153 Sq.Ft.

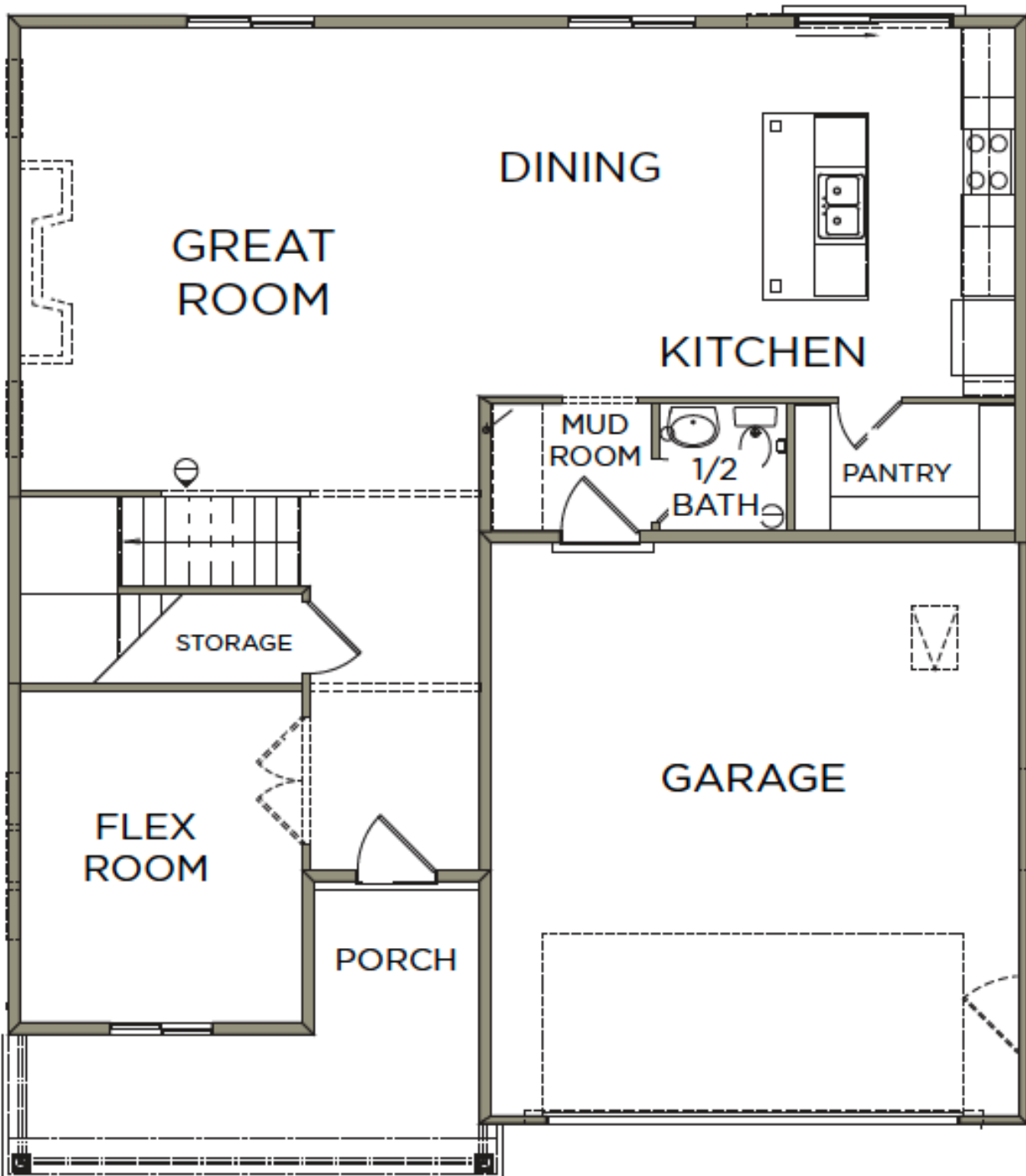
 3 Bedrooms

 3 Car Garage

With a stylish exterior and functional design, our Wasatch floor plan is a charmer. Off the main entry, you'll discover a flex room and stairs leading to all the bedrooms upstairs. The main floor includes a large great room, dining, kitchen, and mudroom with a half bath. Upstairs hosts a spacious loft area, laundry room, two bedrooms, and the owner's suite with an owner's bathroom and large walk-in closet.



MAIN LEVEL- SLAB ON GRADE



UPPER LEVEL

