

www.visionaryhomes.com



Sale Price

\$629,990

 2,290 Sq.Ft.

 3 Bedrooms

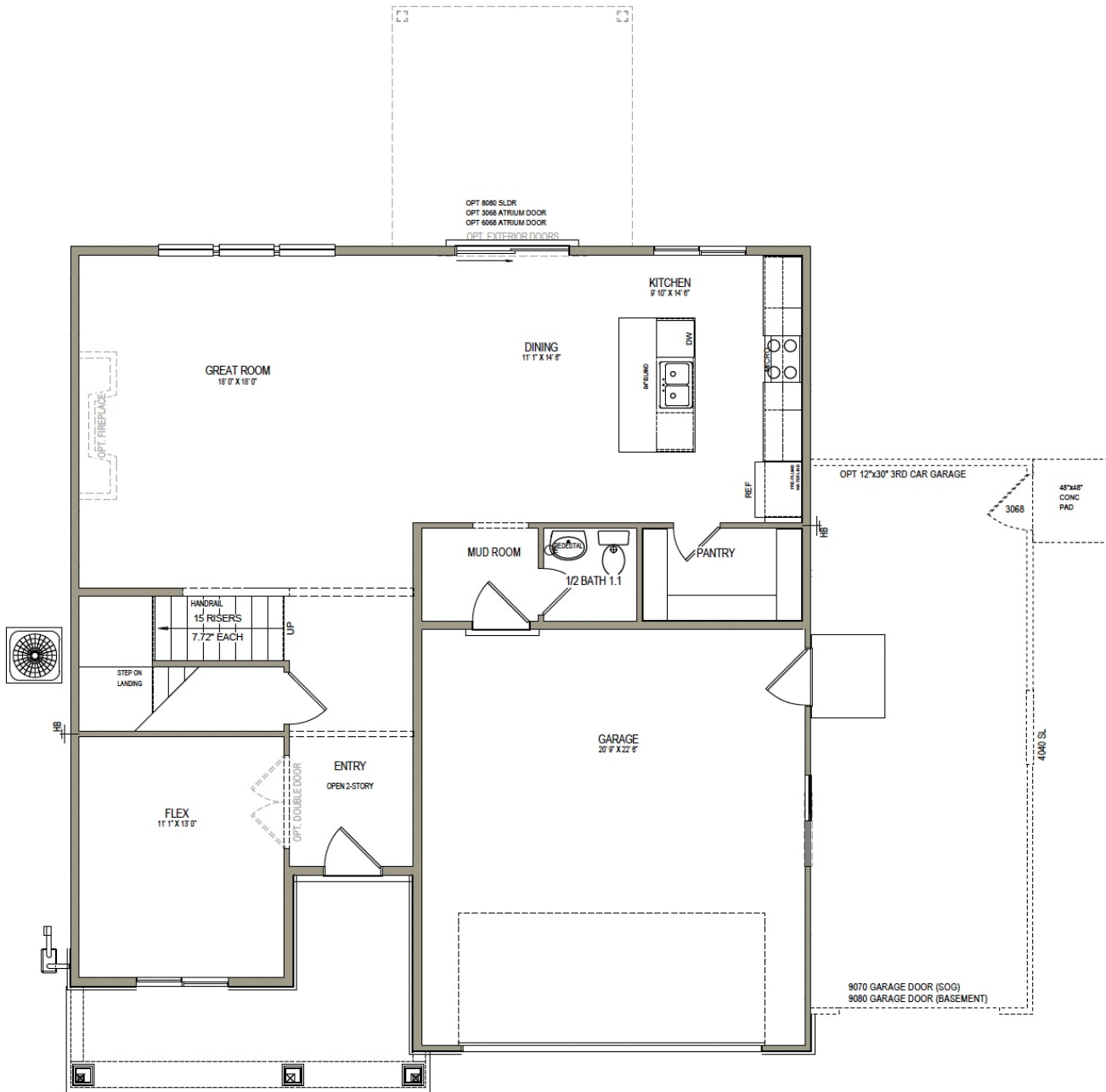
 2 Car Garage

With a stylish exterior and functional design, our Glendale floor plan is a charmer. Off the main entry you'll discover a flex room and stairs leading to all the bedrooms upstairs. The main floor includes a large great room, dining, kitchen, and mudroom with a half bath. Upstairs hosts a spacious loft area, laundry room, two bedrooms and the owner's suite with an owner's bathroom and large walk-in closet.

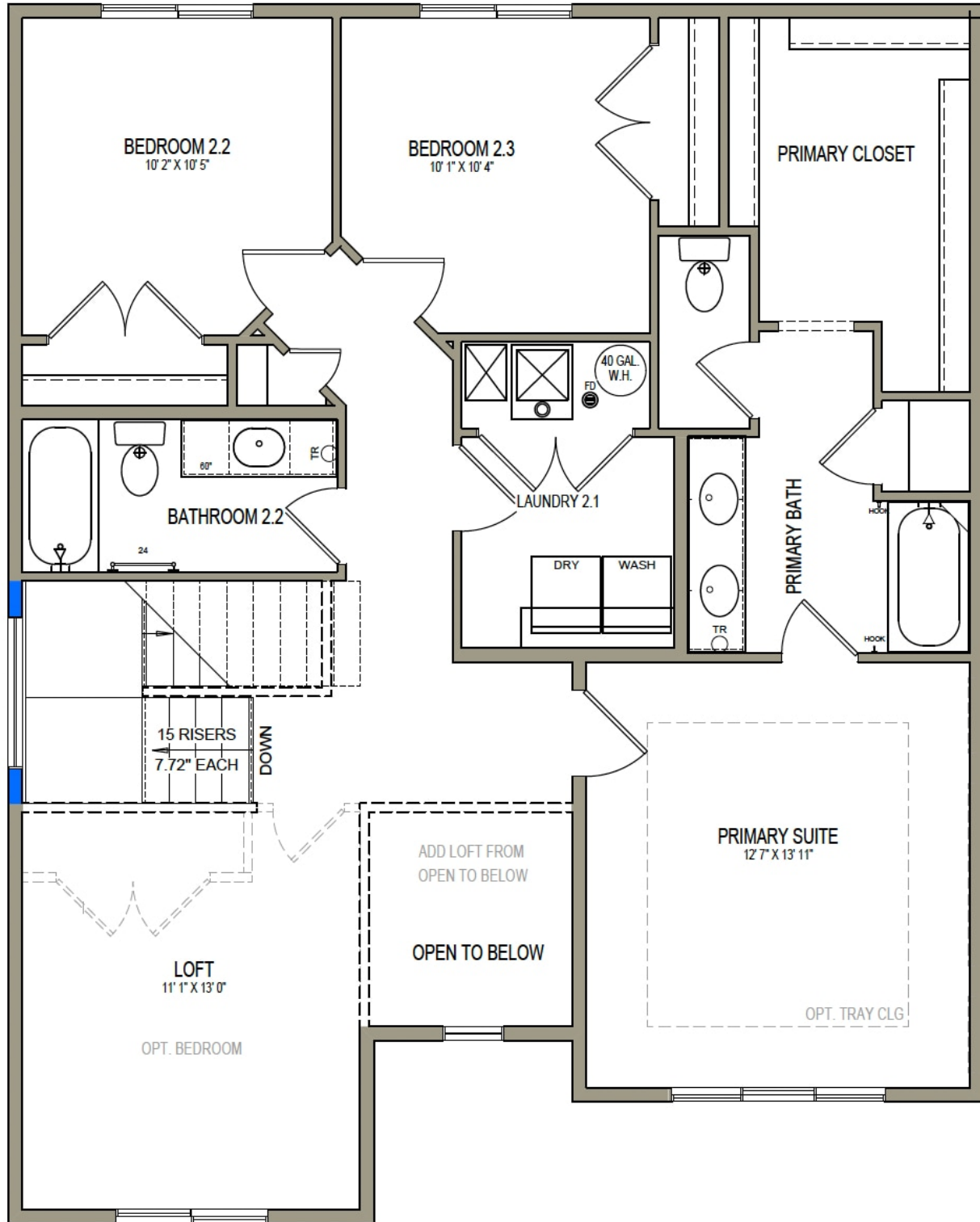


Craftsman

MAIN LEVEL - SLAB ON GRADE



UPPER LEVEL



*Visionary Homes reserves the right to change prices without notice. Approximate square footage and options shown in plan may not be included in base price.