

www.visionaryhomes.com


Cambridge

4 Elevations Available

 1,894 Total Sq.Ft.

 1,894 Finished Sq.Ft.

 3 Bedrooms

 2 Bathrooms

 2 - 3 Car Garage

The Cambridge floor plan is the perfect upgrade for families looking for more space, with 3 bedrooms and 2 bathrooms. This beautiful floor plan features grand windows, an open-concept design, and a spacious owner's suite. Enjoy an aesthetic and memorable every day life within the beautiful environment of this home.



Craftsman



Farmhouse

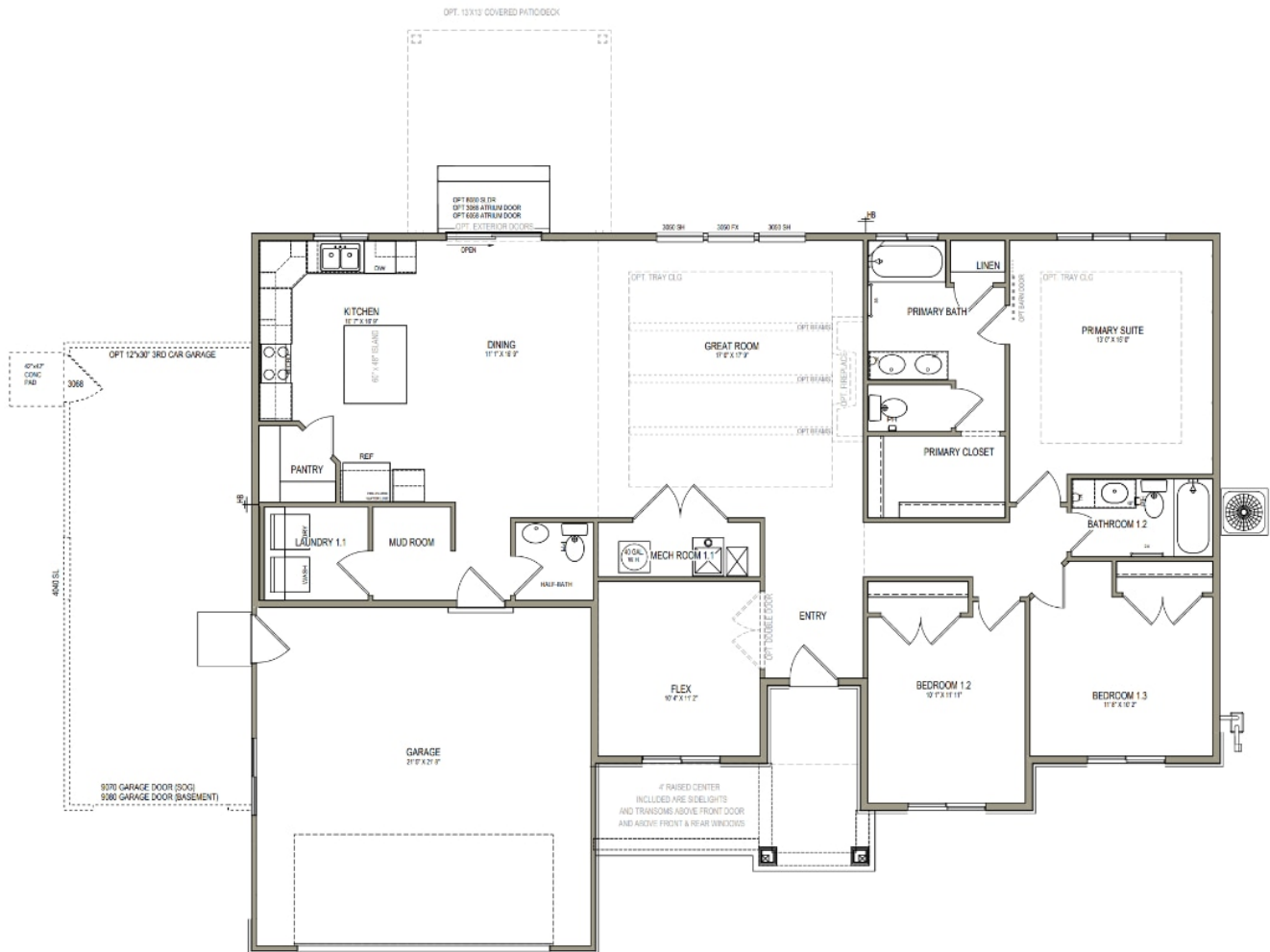


Traditional w/Stucco

www.visionaryhomes.com



Traditional w/Hardboard



435.228.4702
visionaryhomes.com