

www.visionaryhomes.com


Glendale

3 Elevations Available

 2,290 Total Sq.Ft.

 3 Bedrooms

 2.5 Bathrooms

 2 - 3 Car Garage

The Glendale floor plan offers both a stylish exterior and beautiful interior layout-- perfect for you and your family! The main floor includes a spacious great room, dining, kitchen, mudroom, and a half bath. Upstairs you'll find a spacious loft area, laundry room, and three bedrooms. In addition to two comfortable secondary bedrooms, explore the spacious owner's suite with an owner's bathroom and roomy walk-in closet.



Craftsman



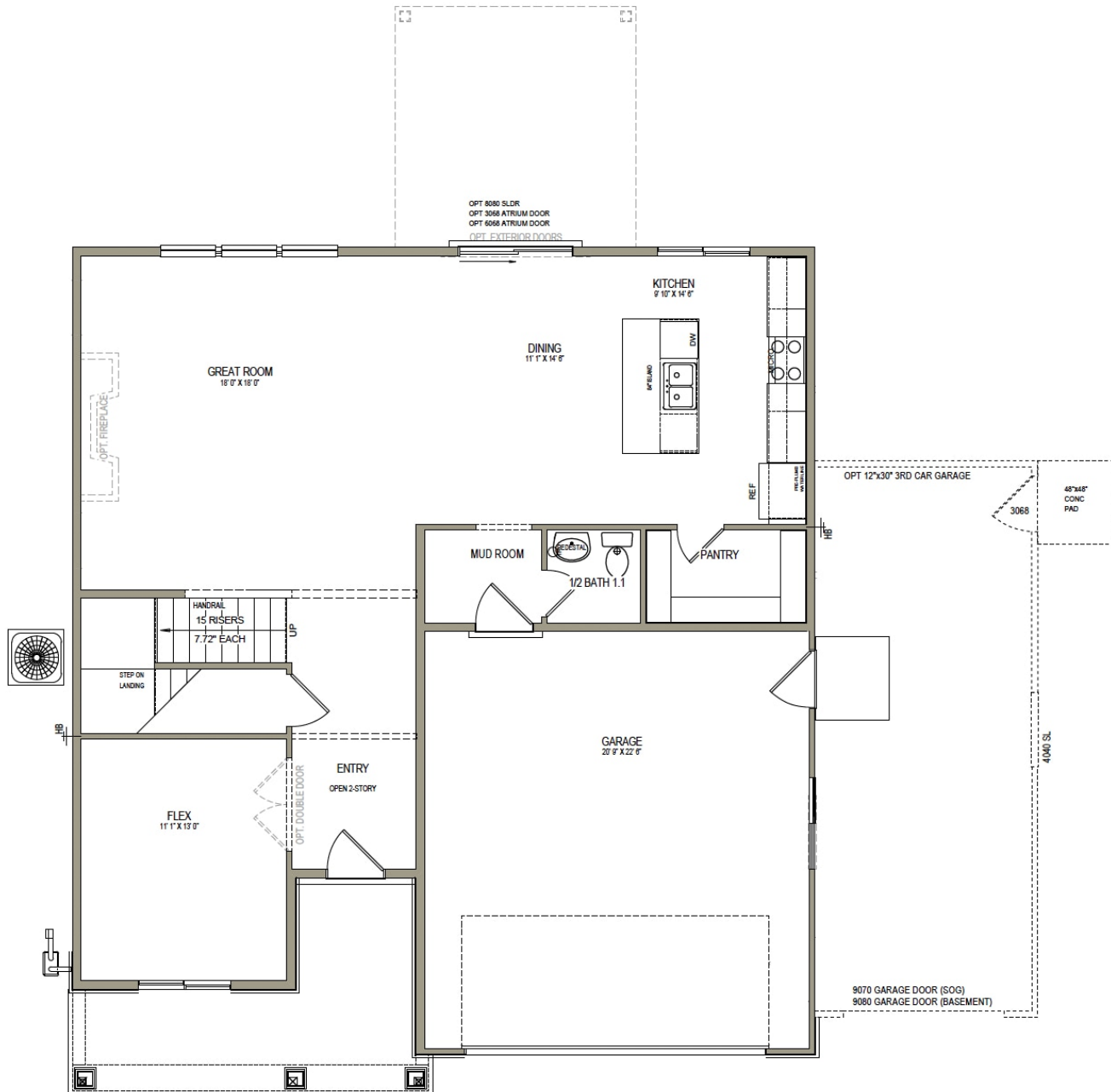
Farmhouse



Traditional w/Stucco

*Visionary Homes reserves the right to change prices without notice.
Approximate square footage and options shown in plan may not be included in base price.

435.228.4702
visionaryhomes.com

www.visionaryhomes.com
MAIN LEVEL - SLAB ON GRADE


*Visionary Homes reserves the right to change prices without notice.
Approximate square footage and options shown in plan may not be included in base price.

435.228.4702
visionaryhomes.com

UPPER LEVEL

