

www.visionaryhomes.com


Remington

3 Elevations Available

 2,876 Total Sq.Ft.

 4 Bedrooms

 2.5 Bathrooms

 2 - 3 Car Garage

With 4 bedrooms and 2.5 bathrooms, the Remington is the perfect spacious floor plan for a home that will meet the needs of your family for years to come. Upon entry, you'll walk into the main living area with floor-to-ceiling windows bringing in plenty of natural light and beauty. A gourmet kitchen features a walk-in pantry and plenty of counter space for all your cooking activities. The open staircase gives this popular floor plan a spacious feel. The owner's suite brings luxury and relaxation to another level with a beautiful bath and a massive walk-in closet with windows. The upper level also features an open loft, three medium sized bedrooms with three featuring walk-in closets, and a second full bathroom.



Craftsman

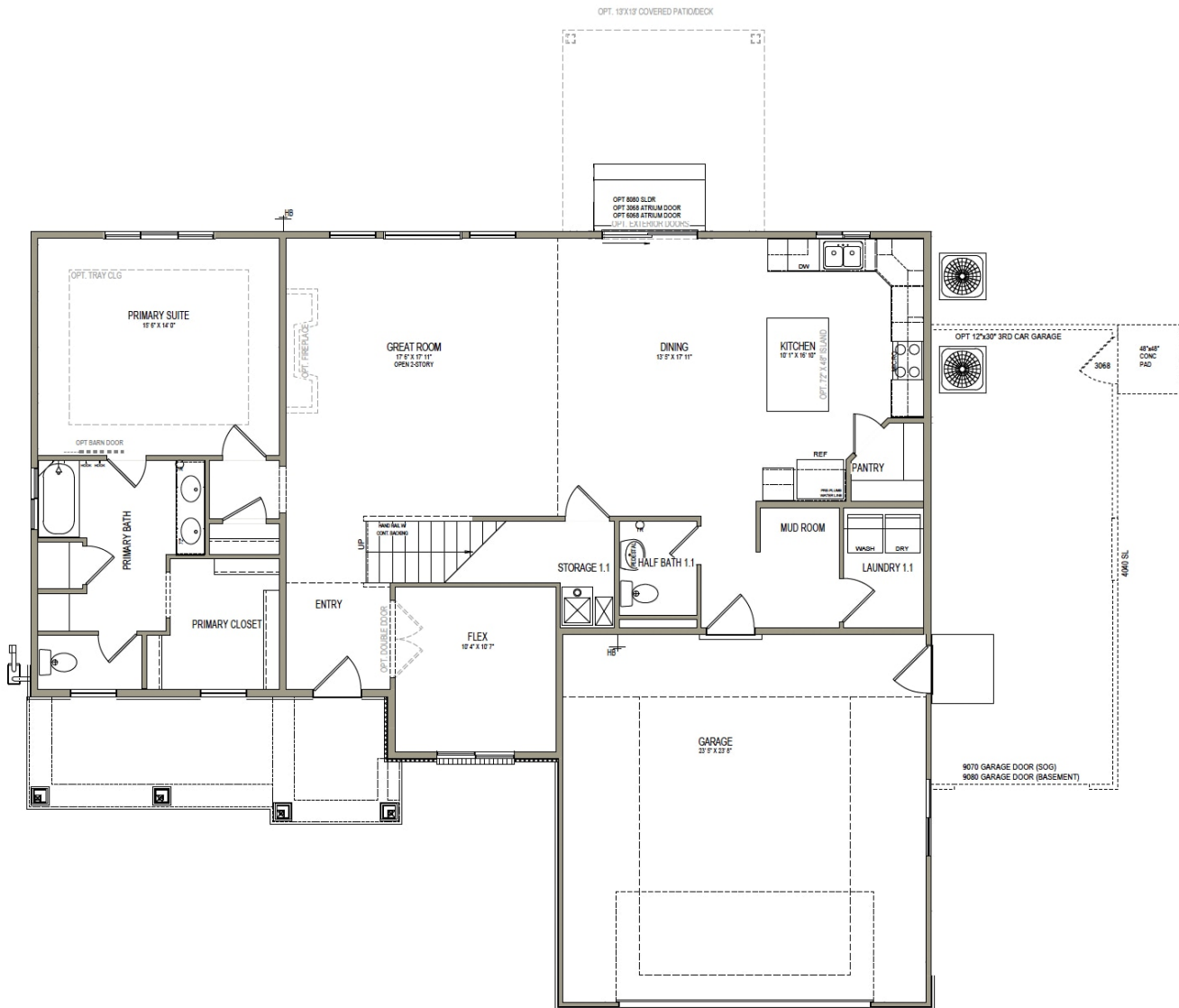


Farmhouse



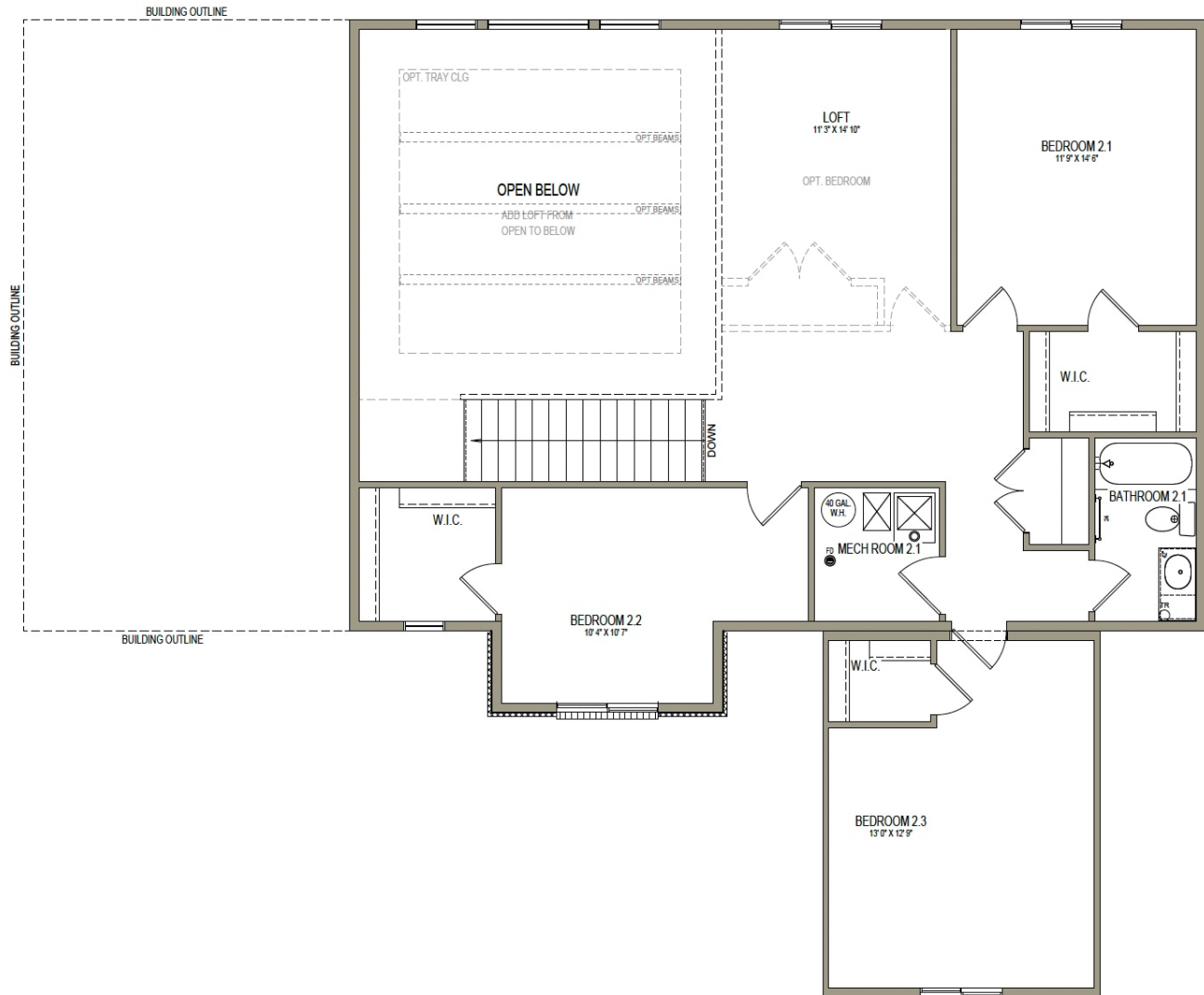
Traditional w/Stucco

MAIN LEVEL SLAB ON GRADE



www.visionaryhomes.com

UPPER LEVEL



*Visionary Homes reserves the right to change prices without notice.
Approximate square footage and options shown in plan may not be included in base price.

435.228.4702
visionaryhomes.com