

[www.visionaryhomes.com](http://www.visionaryhomes.com)



Sale Price

**\$604,610**

 2,414 Sq.Ft.

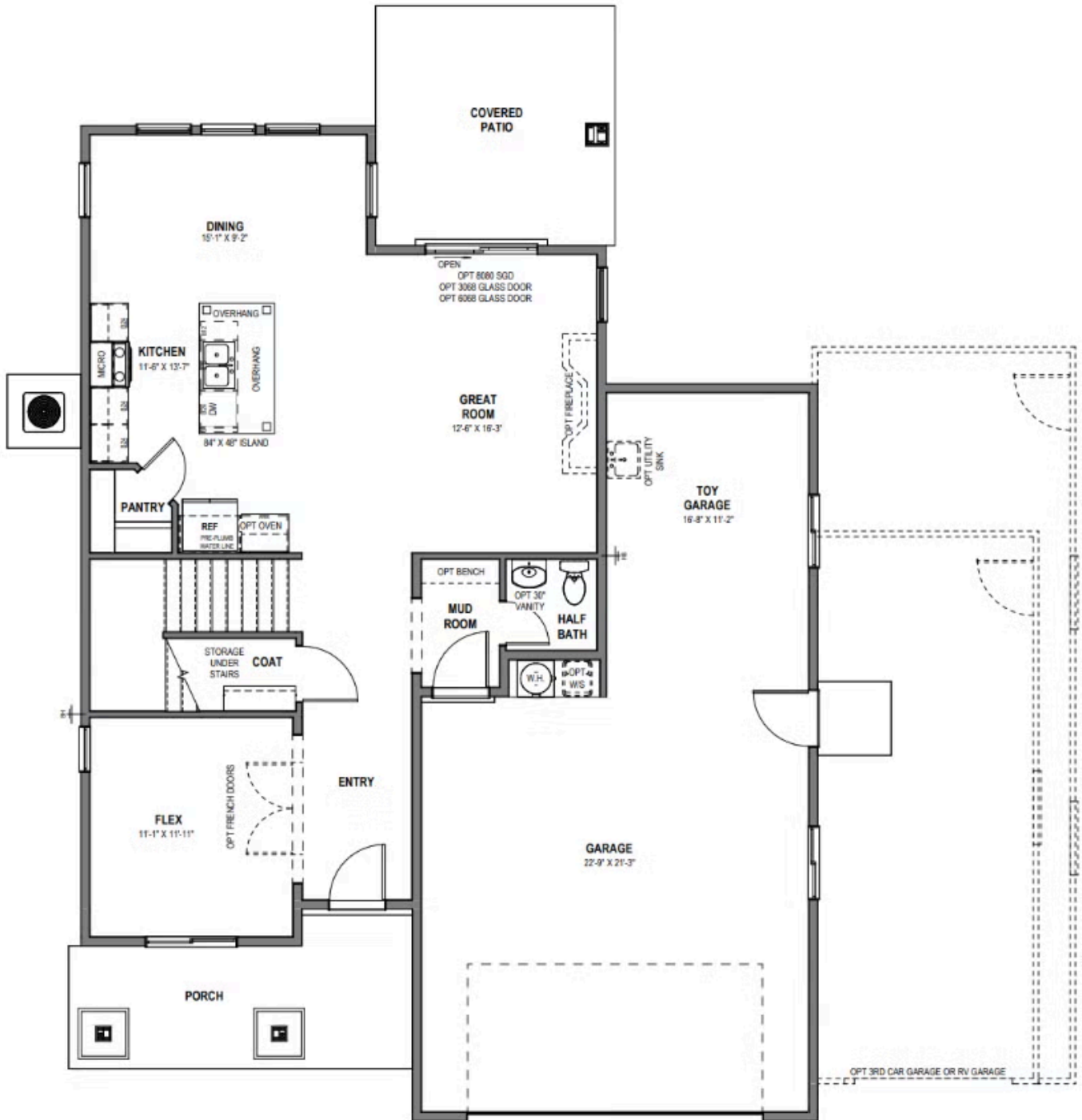
 4 Bedrooms

 2 Car Garage

The Magdalena is designed with family living in mind. The open-concept main floor flows seamlessly from the kitchen to the family room, with a versatile flex space off the entry and a covered patio perfect for year-round entertaining. Upstairs features a cozy loft, convenient laundry room, three additional bedrooms, and a spacious primary suite with a stunning bathroom and walk-in closet. A 2-car garage plus separate toy garage offers plenty of room for vehicles, gear, and storage.



MAIN LEVEL - SLAB ON GRADE



UPPER LEVEL

