

www.visionaryhomes.com


Sierra Vista

1 Elevations Available

 1,606 Total Sq.Ft.

 3 Bedrooms

 2.5 Bathrooms

 2 Car Garage

With 3 bedrooms and 2.5 bathrooms, The Sierra Vista two-story townhome offers up style and function in a modern appeal. On the main floor, you and your family can relax in the family room and watch TV to cook and dine in the kitchen and dining nearby, thanks to the open concept design. The kitchen provides a spacious walk-in pantry and additional counter space with a kitchen island for easy prep and cooking. Everything from a coat closet at the entry to the mudroom off the garage, provide additional storage space throughout. You're sure to love all of the upstairs living space, with a loft for turning into a study, lounge, or playroom, to the primary bedroom featuring a spacious bathroom and large walk-in closet including a window.



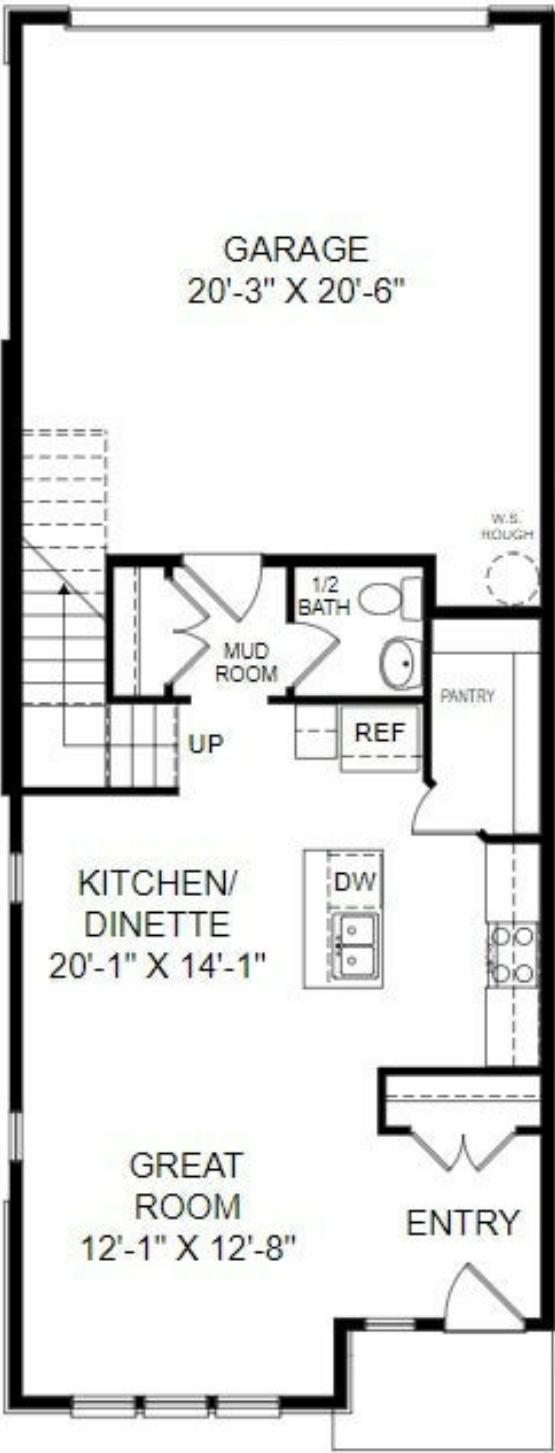
FRONT ELEVATION

RENDERING



www.visionaryhomes.com

MAIN LEVEL - SLAB ON GRADE

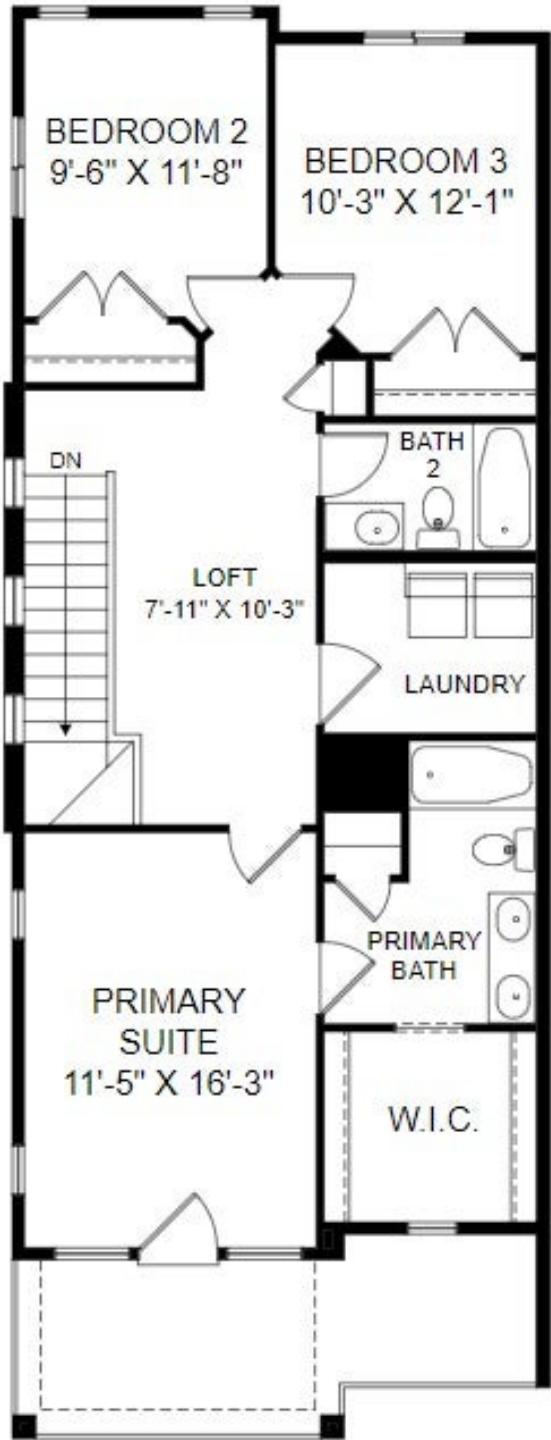


*Visionary Homes reserves the right to change prices without notice.
Approximate square footage and options shown in plan may not be included in base price.



www.visionaryhomes.com

UPPER LEVEL



*Visionary Homes reserves the right to change prices without notice.
Approximate square footage and options shown in plan may not be included in base price.