

[www.visionaryhomes.com](http://www.visionaryhomes.com)**Sale Price****\$429,990** 1,263 Sq.Ft. 3 Bedrooms 2 Car Garage

Enjoy your ideal lifestyle in the Hilldale rambler floor plan featuring 3 beds and 2 baths. With an open-concept main living space right when you enter showcasing the family room, kitchen, and dining for everything from cooking, lounging, and socializing with the family. Discover a hallway off the kitchen leading into the bedrooms, laundry, and bathroom. With the bedrooms facing the back of the home and the owner's suite on the other side for a secluded, comfy feel so you can relax and unwind, including an owner's bath and walk-in closet. Each bedroom features large walk-in closets for additional space for your everyday things.

**EXTERIOR FEATURES:**

- .14 acre lot
- Craftsman elevation with painted siding and shingles
- 2 car garage
- Covered front porch

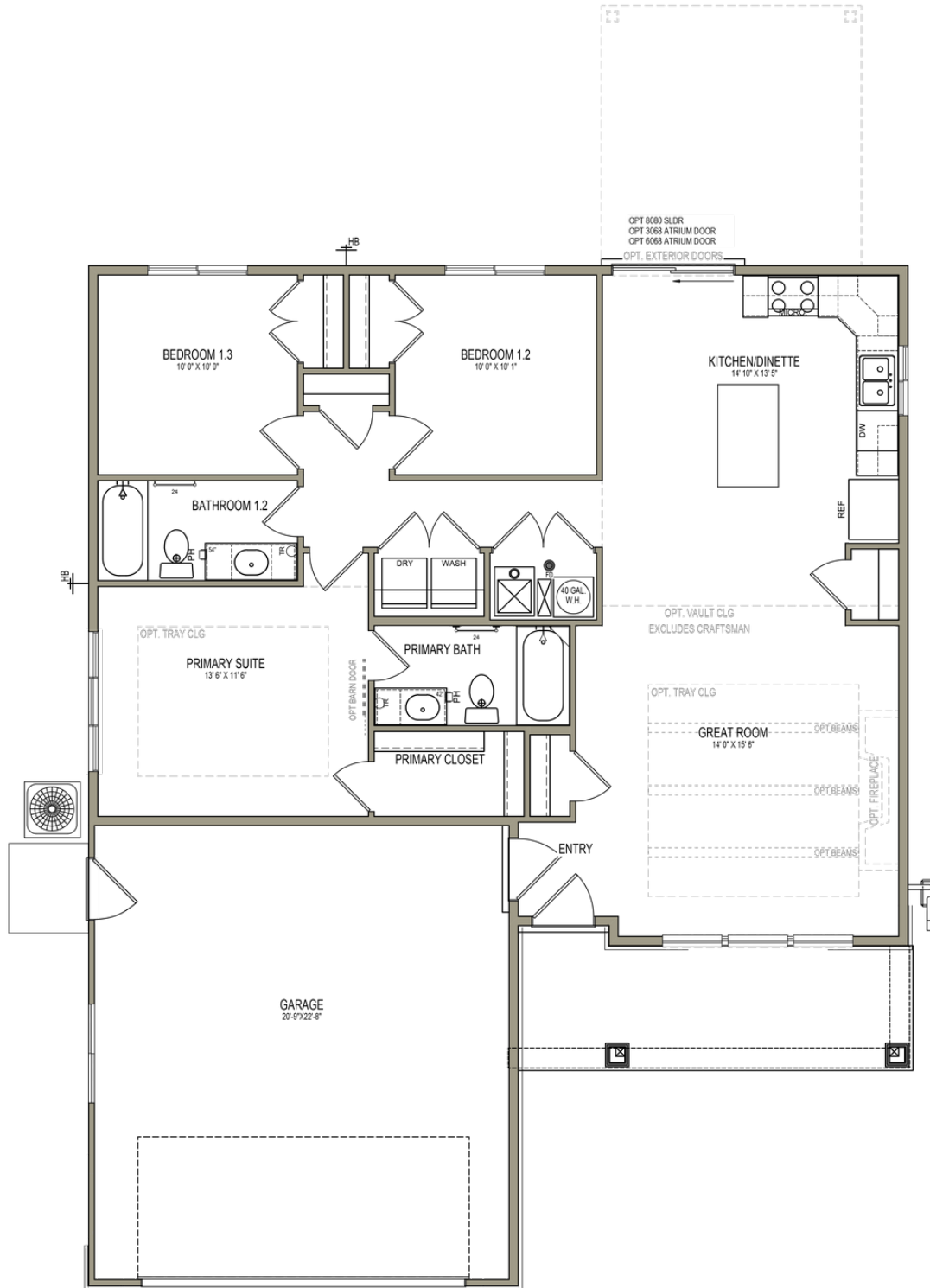
**INTERIOR FEATURES:**

- 3 bed, 2.5 bath, with large living room space
- GE Appliances including dishwasher, microwave, and gas range stove
- Lazy Susan accessory in kitchen cabinet
- Quartz countertops
- LVP flooring in common areas
- Tile flooring in bathrooms and laundry room

\*Visionary Homes reserves the right to change prices without notice.  
Approximate square footage and options shown in plan may not be included in base price.

**435.228.4702**  
[visionaryhomes.com](http://visionaryhomes.com)

MAIN LEVEL - SLAB ON GRADE



\*Visionary Homes reserves the right to change prices without notice. Approximate square footage and options shown in plan may not be included in base price.