

www.visionaryhomes.com


Auburn

3 Elevations Available

 1,848 Total Sq.Ft.

 1,848 Finished Sq.Ft.

 No Basement

 3 Bedrooms

 2 Bathrooms

 2 - 3 Car Garage

The Auburn Rambler floor plan has 3 beds and 2 baths, creating the perfect living space for your family by having the bedrooms right off the entry and main living area. The primary suite next to the great room includes an ensuite bathroom with a walk-in closet to better fit your needs. A mudroom off the garage provides room for all your go-to necessities from keys to schoolbooks and shoes, with the laundry nearby. In the kitchen, you'll find a large walk-in pantry and an island with a sink for ultimate convenience. This is a slab on grade home.



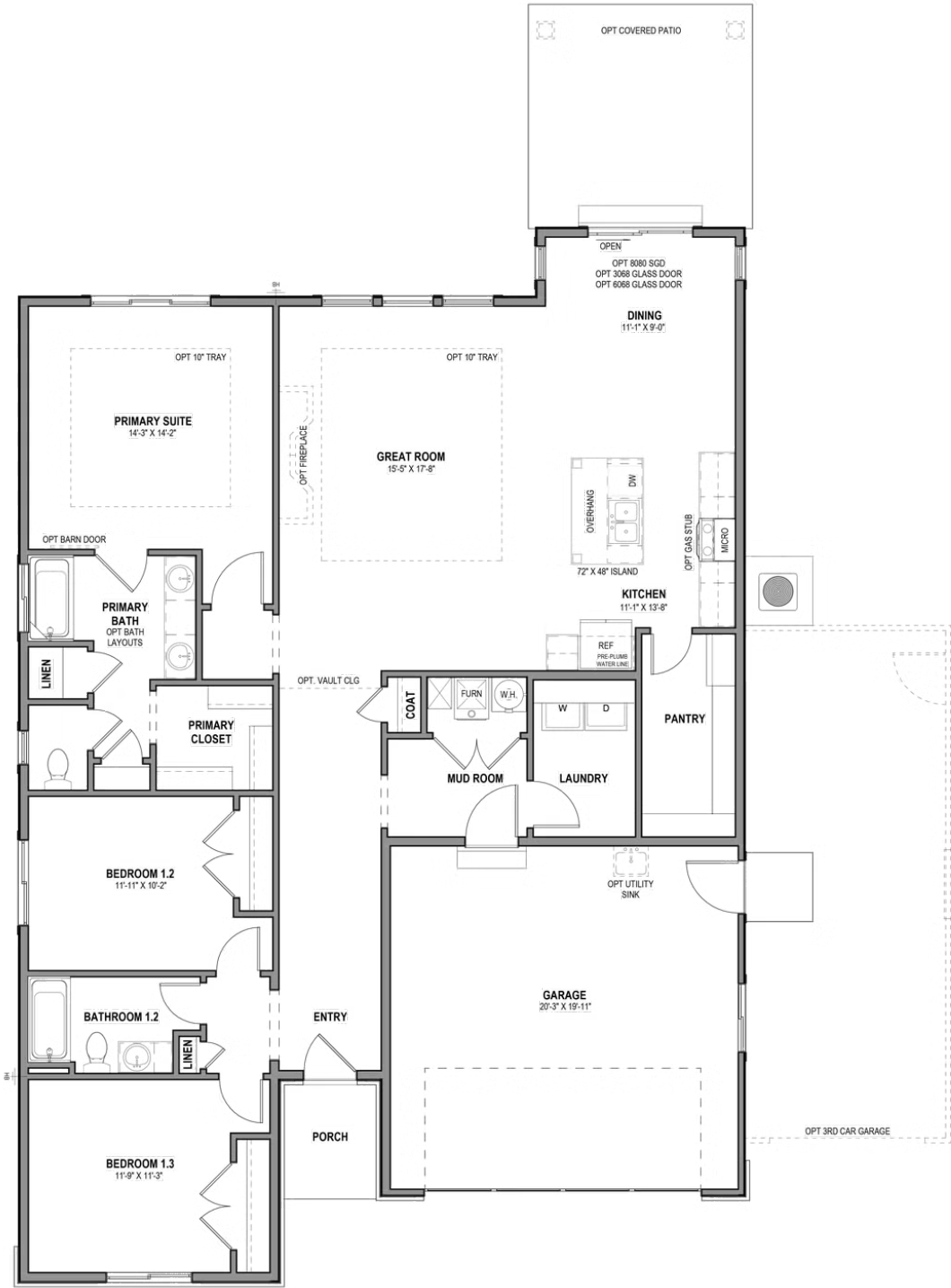
*Visionary Homes reserves the right to change prices without notice. Approximate square footage and options shown in plan may not be included in base price.

435.228.4702
visionaryhomes.com



www.visionaryhomes.com

MAIN LEVEL - SLAB ON GRADE



*Visionary Homes reserves the right to change prices without notice. Approximate square footage and options shown in plan may not be included in base price.