



www.visionaryhomes.com



Sale Price

\$459,990

 1,923 Sq.Ft.

 1,923 Sq.Ft.

 3 Bedrooms

 2 Car Garage

Make The Eucalyptus your new home! As you enter the home, you'll find a spacious entryway with a staircase leading upstairs. Through the entry hallway lies the open-concept main living space. The great room boasts lots of windows letting in plenty of natural light. In the kitchen, you'll find a large kitchen island and a walk-in pantry. Off the kitchen sits a mud room and half bath. Go upstairs to find a loft to use as a study space, home office, or play area. Across the hall, you'll find the primary suite with an ensuite bathroom and a large walk-in closet. Also upstairs lies 2 additional bedrooms, both with walk-in closets, a shared bathroom, a laundry room, and a linen closet. You and your family will love making memories in this stunning home!

Exterior Features:

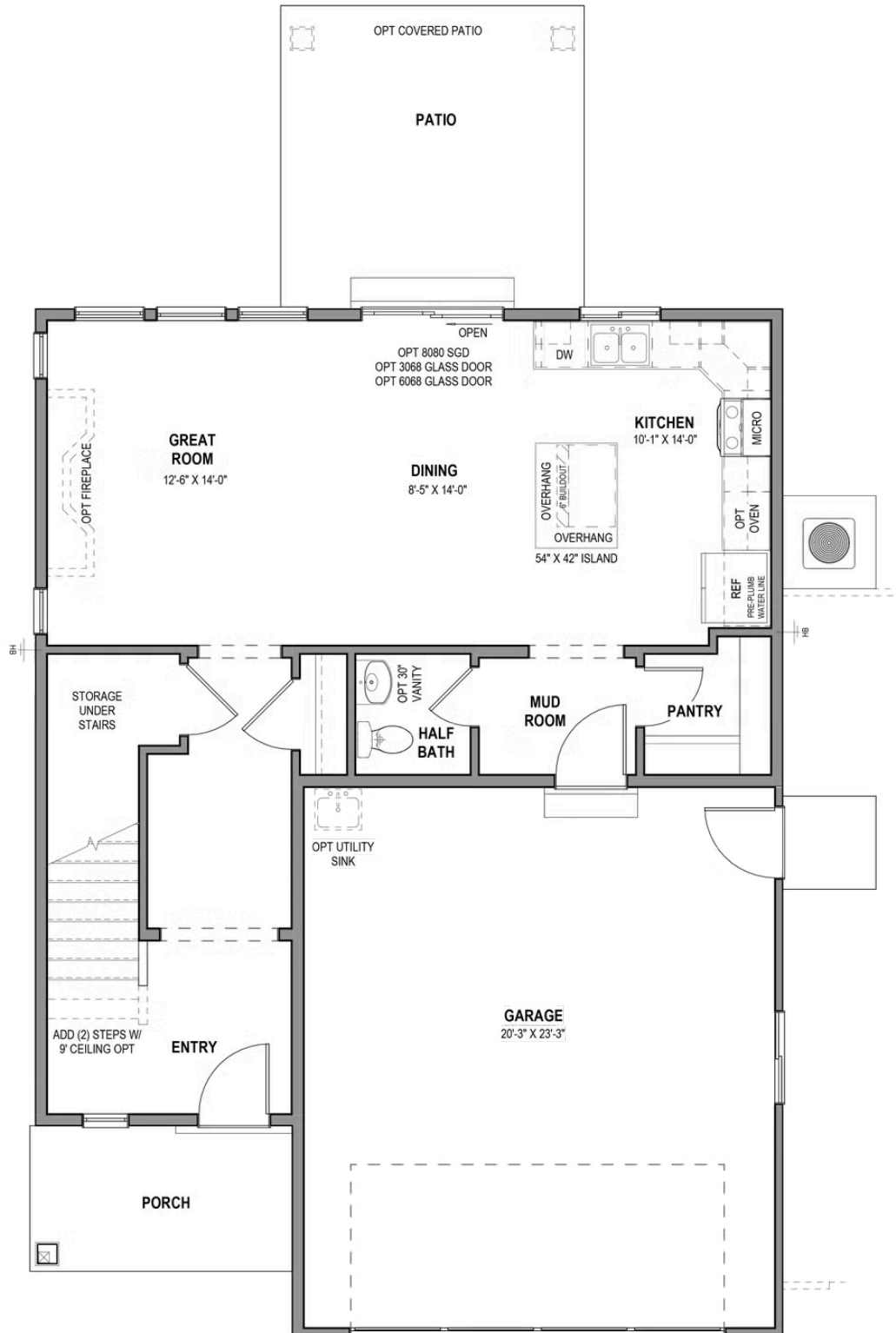
- .11 Acre Lot
- Eucalyptus Floor Plan with Contemporary Elevation
- 2 Car Garage
- Stucco and Stone Materials on Exterior

Interior Features:

- 3 Beds, 2.5 Baths, 1,923 Square Feet
- Slab on Grade Home
- GE Appliances in Kitchen
- Quartz Countertops in Kitchen & Bathrooms
- Tile Backsplash in Kitchen
- Silver Hardware in Kitchen & Bathrooms



MAIN LEVEL - SLAB ON GRADE



UPPER LEVEL

