

www.visionaryhomes.com


Blackberry

3 Elevations Available

 1,672 Total Sq.Ft.

 1,672 Finished Sq.Ft.

 No Basement

 3 Bedrooms

 2.5 Bathrooms

 2 Car Garage

Welcome to The Blackberry! Step inside from your covered front porch to your entryway, with a half-bath located right off the entrance. Through the hallway, you'll find an open-concept main living space with a great room, dining, and kitchen areas. The staircase is conveniently located near the great room and kitchen. At the top of the stairs sits the entrance to the primary suite, with an ensuite bathroom and a large walk-in closet. Also upstairs you will find an additional linen closet, two additional bedrooms, a shared bathroom, and a laundry room. You'll love every moment spent in this quaint cottage home.

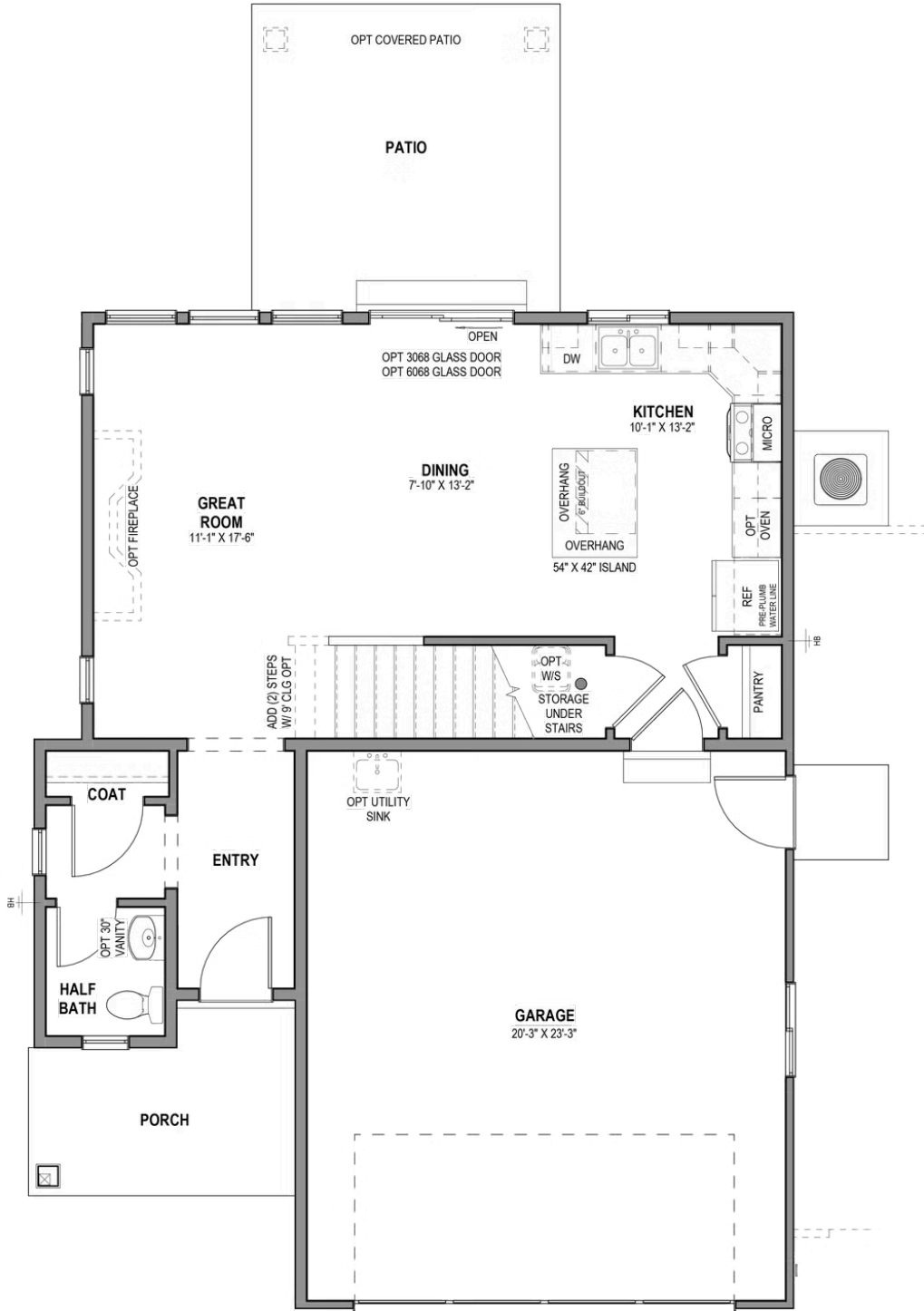


*Visionary Homes reserves the right to change prices without notice. Approximate square footage and options shown in plan may not be included in base price.

435.228.4702
visionaryhomes.com



MAIN LEVEL - SLAB ON GRADE

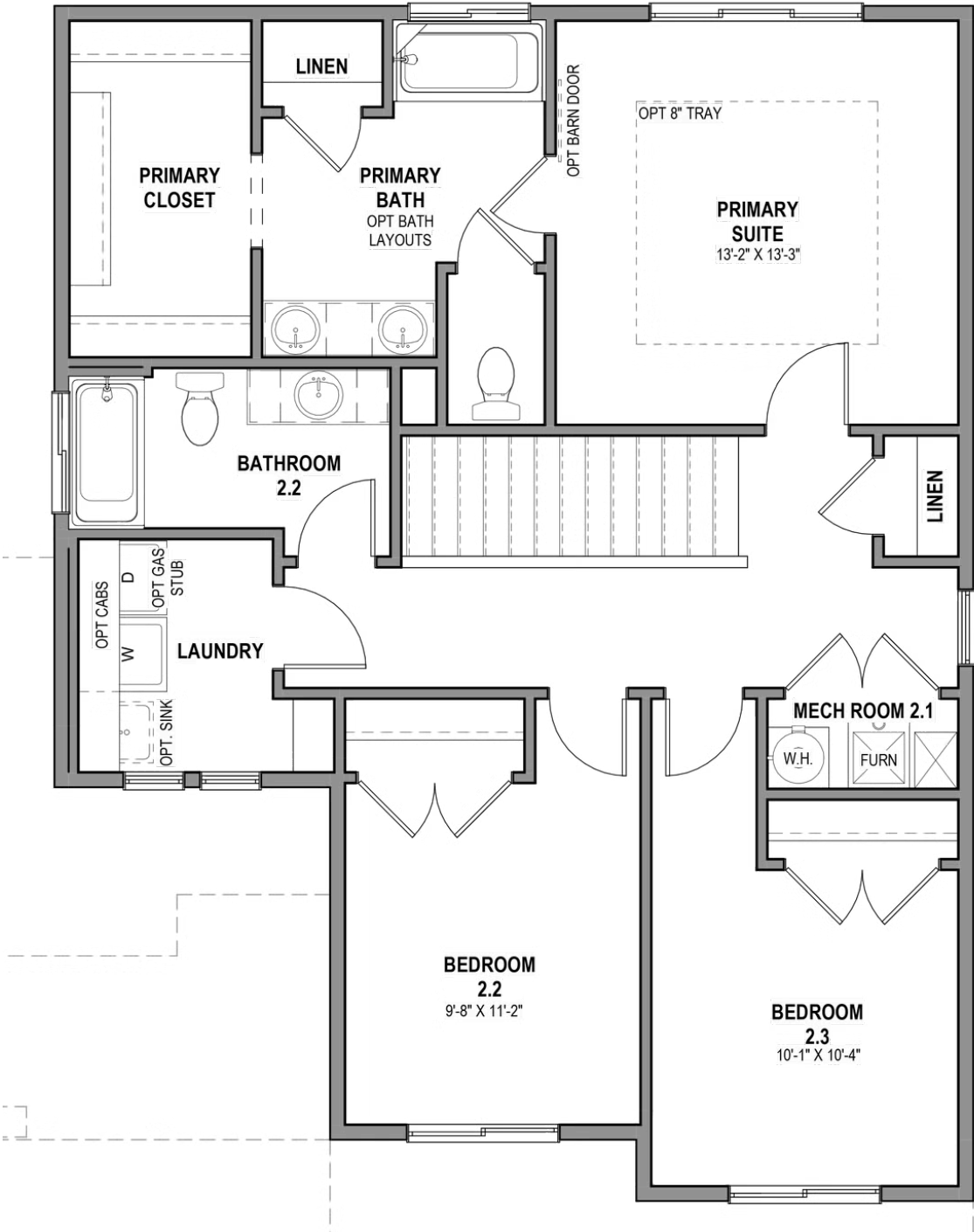


*Visionary Homes reserves the right to change prices without notice. Approximate square footage and options shown in plan may not be included in base price.



www.visionaryhomes.com

UPPER LEVEL



*Visionary Homes reserves the right to change prices without notice. Approximate square footage and options shown in plan may not be included in base price.