

www.visionaryhomes.com


Eucalyptus

3 Elevations Available

 1,923 Total Sq.Ft.

 1,923 Finished Sq.Ft.

 No Basement

 3 Bedrooms

 2.5 Bathrooms

 2 Car Garage

Make The Eucalyptus your new home! As you enter the home, you'll find a spacious entryway with a staircase leading upstairs. Through the entry hallway lies the open-concept main living space. The great room boasts lots of windows letting in plenty of natural light. In the kitchen, you'll find a large kitchen island and a walk-in pantry. Off the kitchen sits a mud room and half bath. Go upstairs to find a loft to use as a study space, home office, or play area. Across the hall, you'll find the primary suite with an ensuite bathroom and a large walk-in closet. Also upstairs lies 2 additional bedrooms, both with walk-in closets, a shared bathroom, a laundry room, and a linen closet. You and your family will love making memories in this stunning home!



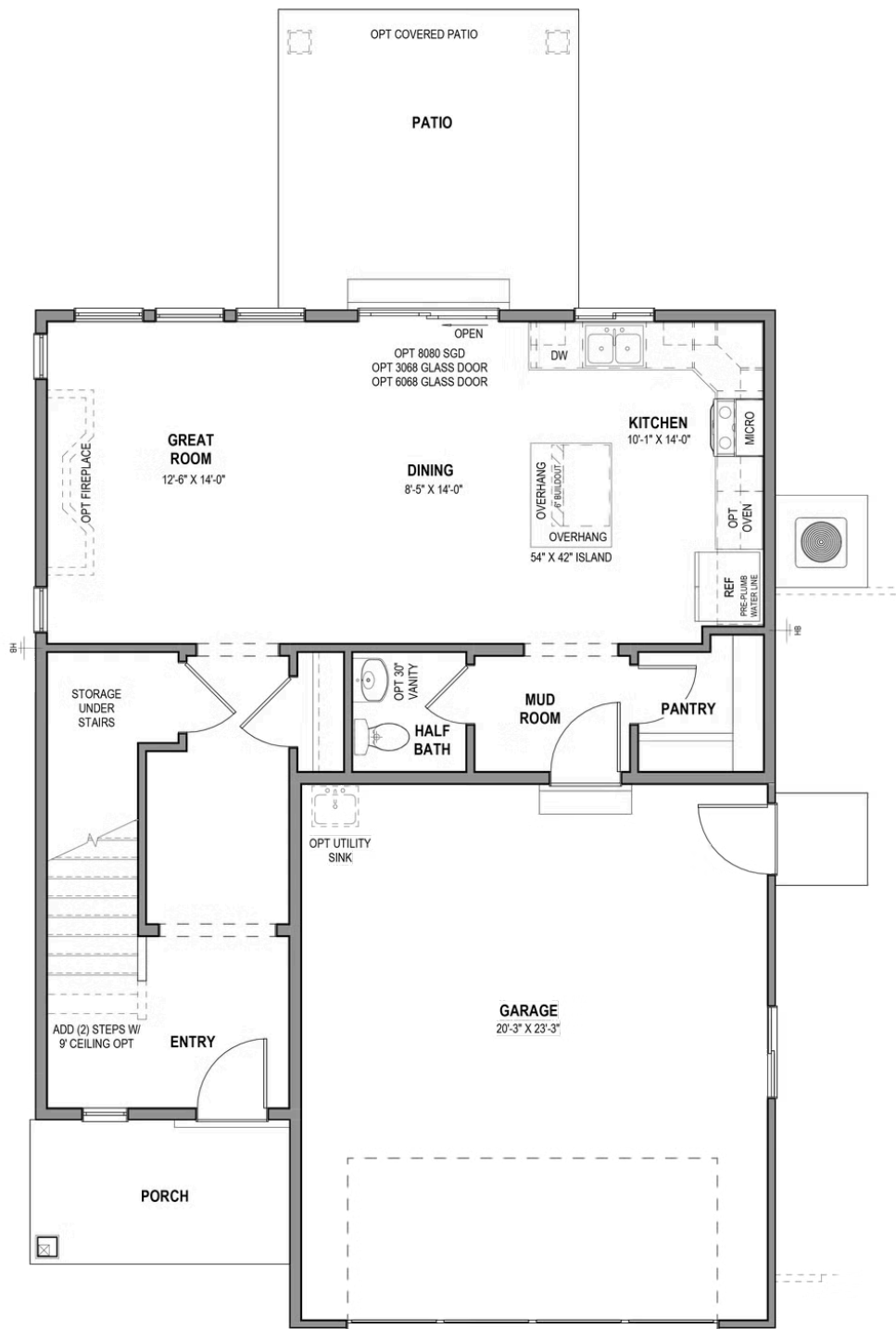
*Visionary Homes reserves the right to change prices without notice. Approximate square footage and options shown in plan may not be included in base price.

435.228.4702
visionaryhomes.com



www.visionaryhomes.com

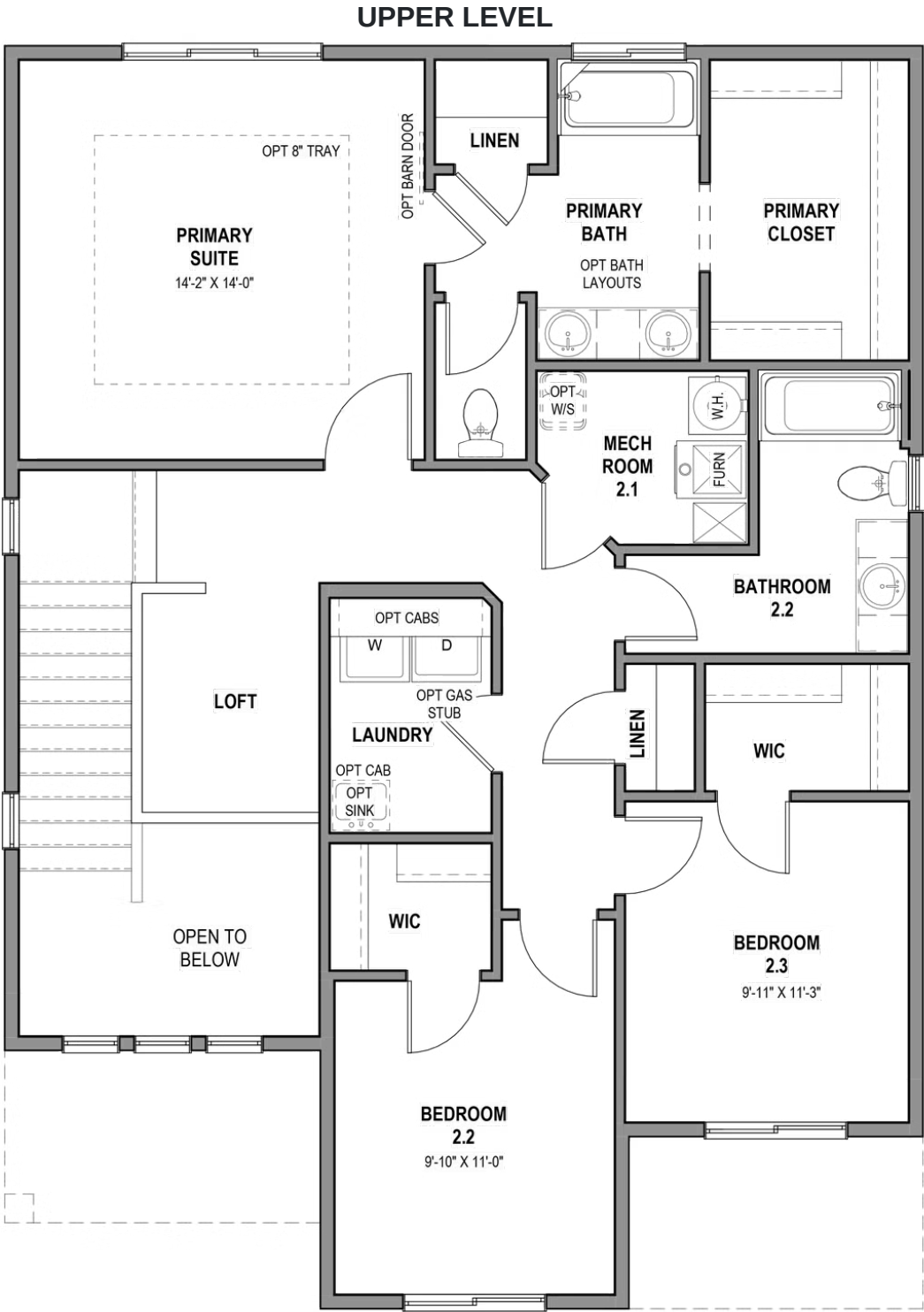
MAIN LEVEL - SLAB ON GRADE



*Visionary Homes reserves the right to change prices without notice. Approximate square footage and options shown in plan may not be included in base price.



www.visionaryhomes.com



*Visionary Homes reserves the right to change prices without notice. Approximate square footage and options shown in plan may not be included in base price.