

[www.visionaryhomes.com](http://www.visionaryhomes.com)


# Hemlock

3 Elevations Available

 2,174 Total Sq.Ft.

 2,174 Finished Sq.Ft.

 No Basement

 3 - 4 Bedrooms

 2.5 Bathrooms

 2 Car Garage

Feel right at home in The Hemlock cottage floor plan! Step inside from your covered front porch to your open-to-above entryway, with a staircase leading upstairs and a coat closet. Continue inside to find your mudroom with an optional bench and half bathroom. At the back of the home sits an open-concept main living area with plenty of windows for natural light. In the kitchen sits a large island with a sink and dishwasher. A large walk-in pantry sits nearby. Back in the entryway, walk upstairs to find a loft space, which can be turned into an additional bedroom if you desire. The primary suite features large windows for plenty of light, an ensuite bathroom with double vanities, and a walk-in closet. Upstairs you will also find 2 additional bedrooms, a shared bathroom, and a laundry room. Make The Hemlock your new home today!



\*Visionary Homes reserves the right to change prices without notice. Approximate square footage and options shown in plan may not be included in base price.

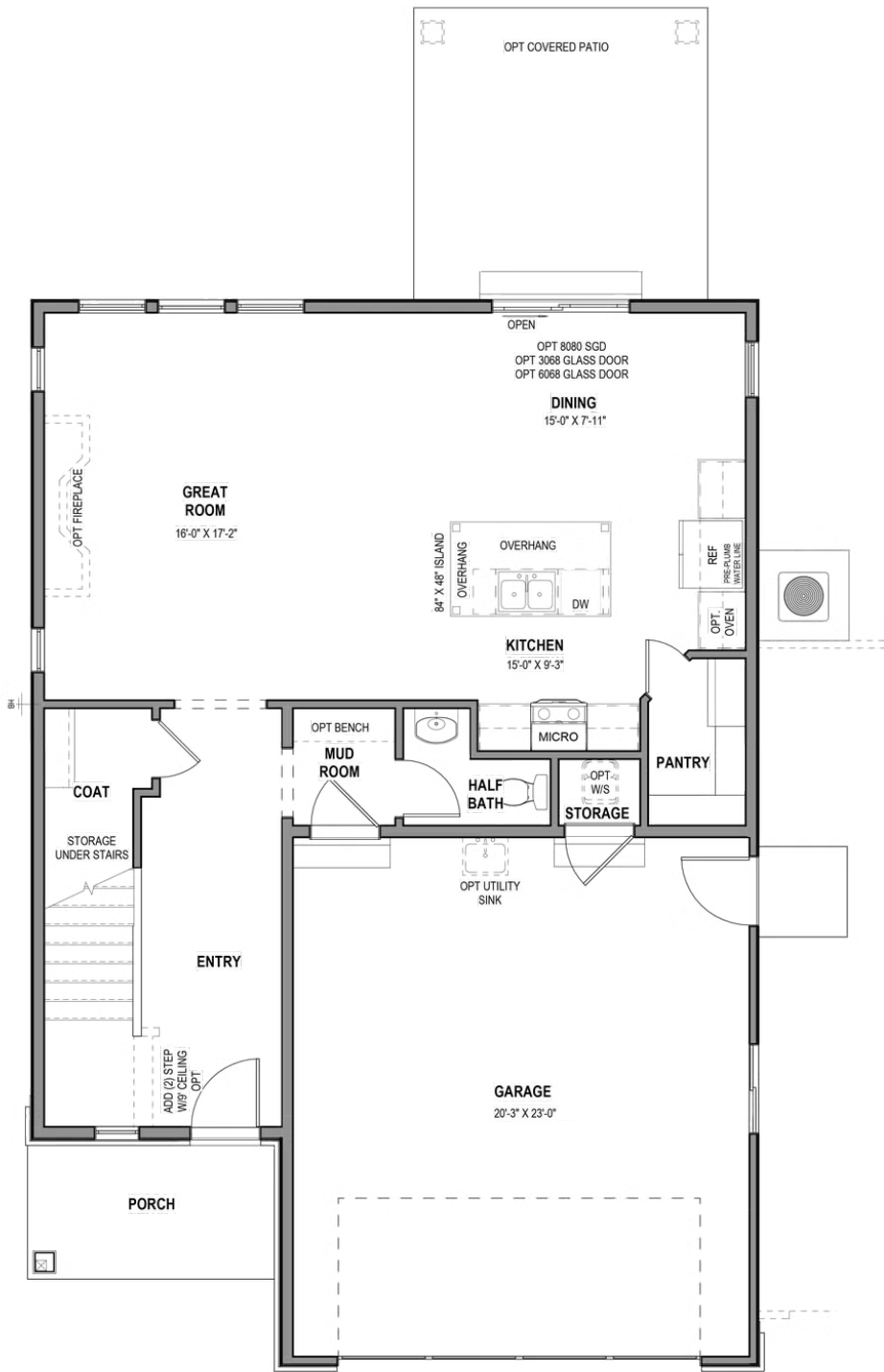
**435.228.4702**  
[visionaryhomes.com](http://visionaryhomes.com)





www.visionaryhomes.com

MAIN LEVEL - SLAB ON GRADE

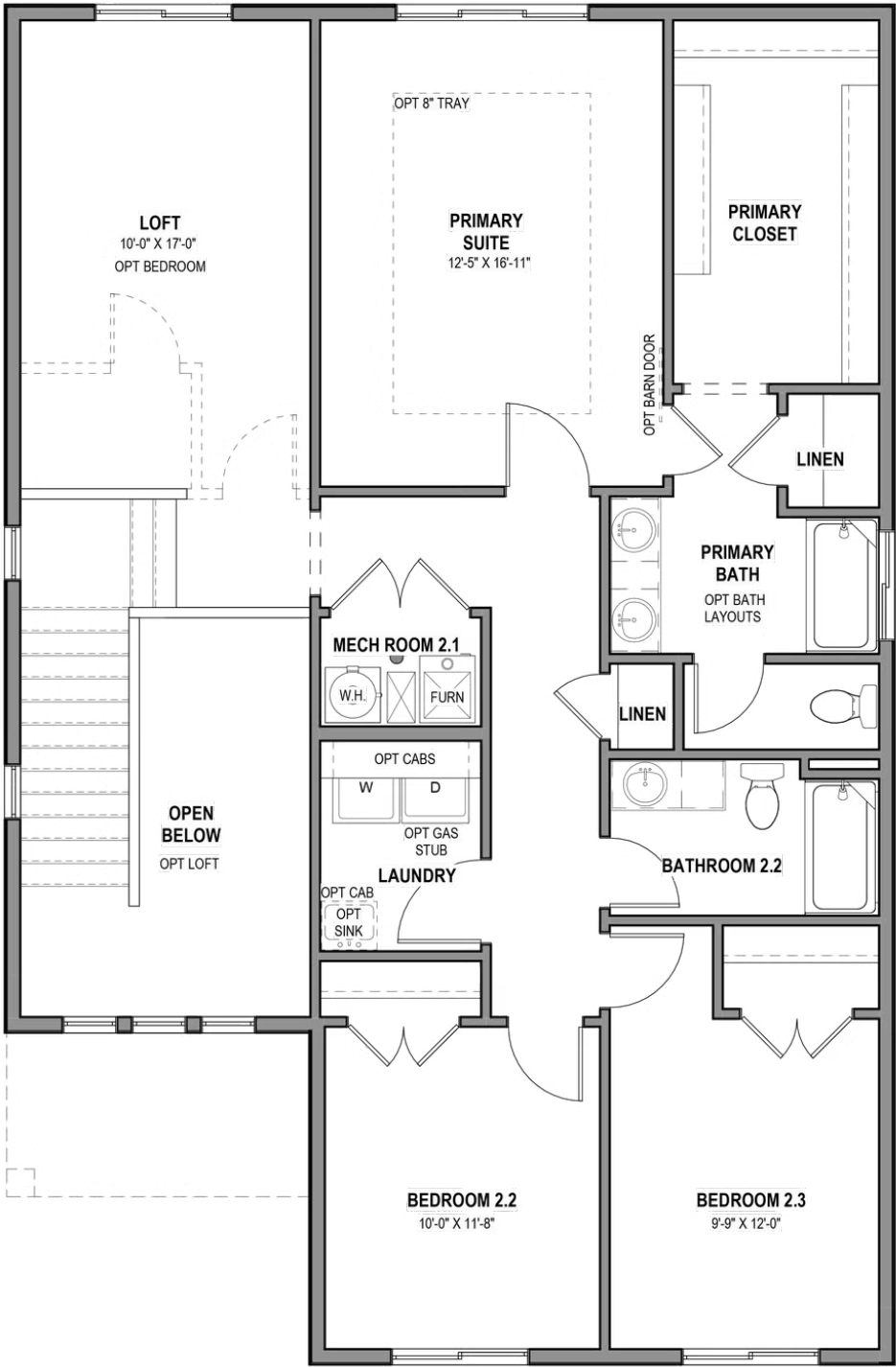


\*Visionary Homes reserves the right to change prices without notice. Approximate square footage and options shown in plan may not be included in base price.



www.visionaryhomes.com

UPPER LEVEL



\*Visionary Homes reserves the right to change prices without notice. Approximate square footage and options shown in plan may not be included in base price.