

[www.visionaryhomes.com](http://www.visionaryhomes.com)


## Magnolia

3 Elevations Available

 2,474 Total Sq.Ft.

 2,474 Finished Sq.Ft.

 No Basement

 4 Bedrooms

 2.5 Bathrooms

 2 - 3 Car Garage

Welcome to The Magnolia cottage plan! Walk inside to your spacious entryway with a half-bath conveniently located right off the entry. Through the entry hall you'll find a large great room, kitchen and dining areas. The kitchen features a large island with sinks and huge walk-in pantry. Nearby sits a mud room off the garage entrance. Upstairs sits a functional loft area, 3 spare bedrooms and secondary bathroom. At the end of the upstairs hallway you'll access the Primary Suite, with large ensuite bathroom and walk-in closet. Make this spacious cottage plan yours today!



\*Visionary Homes reserves the right to change prices without notice. Approximate square footage and options shown in plan may not be included in base price.

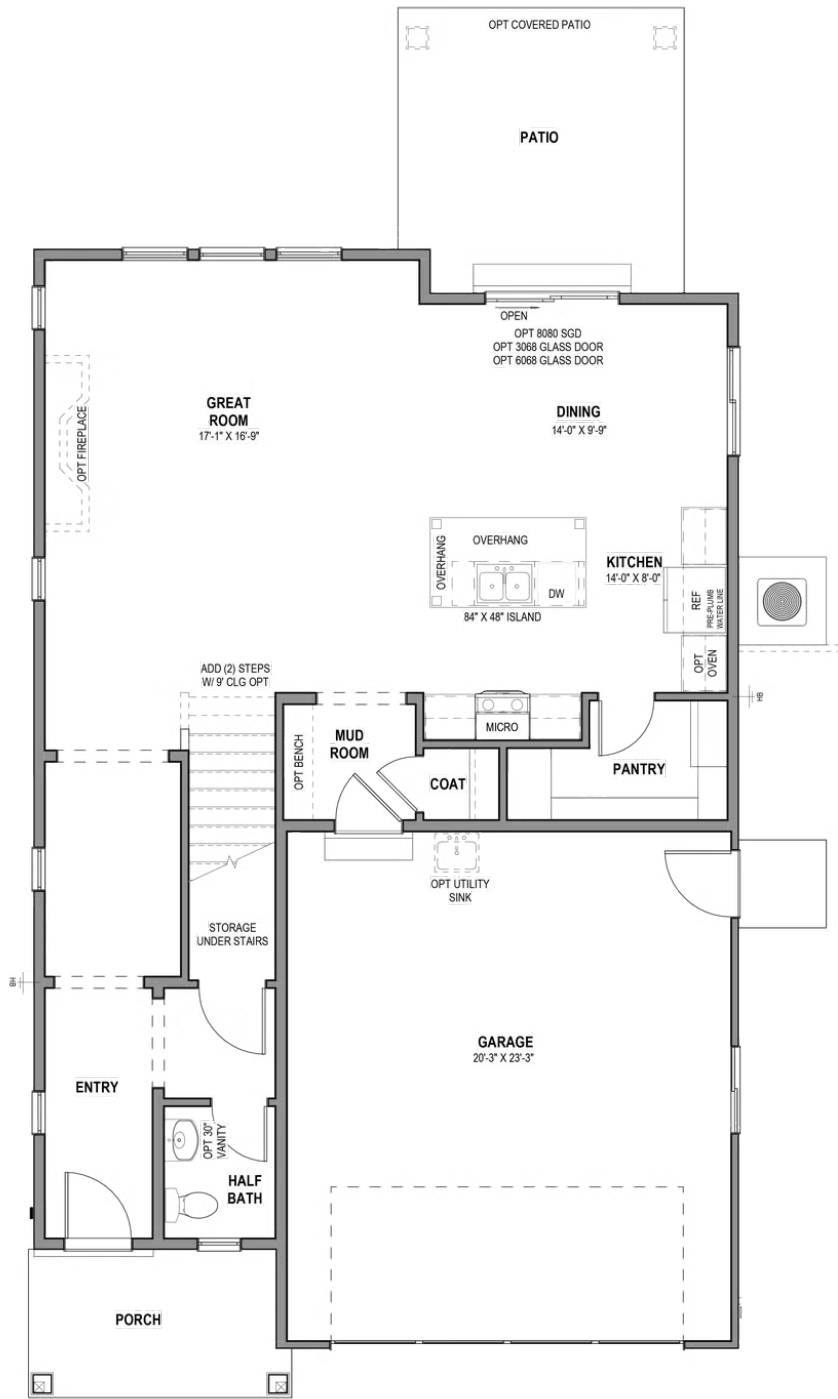
**435.228.4702**  
[visionaryhomes.com](http://visionaryhomes.com)





www.visionaryhomes.com

MAIN LEVEL - SLAB ON GRADE

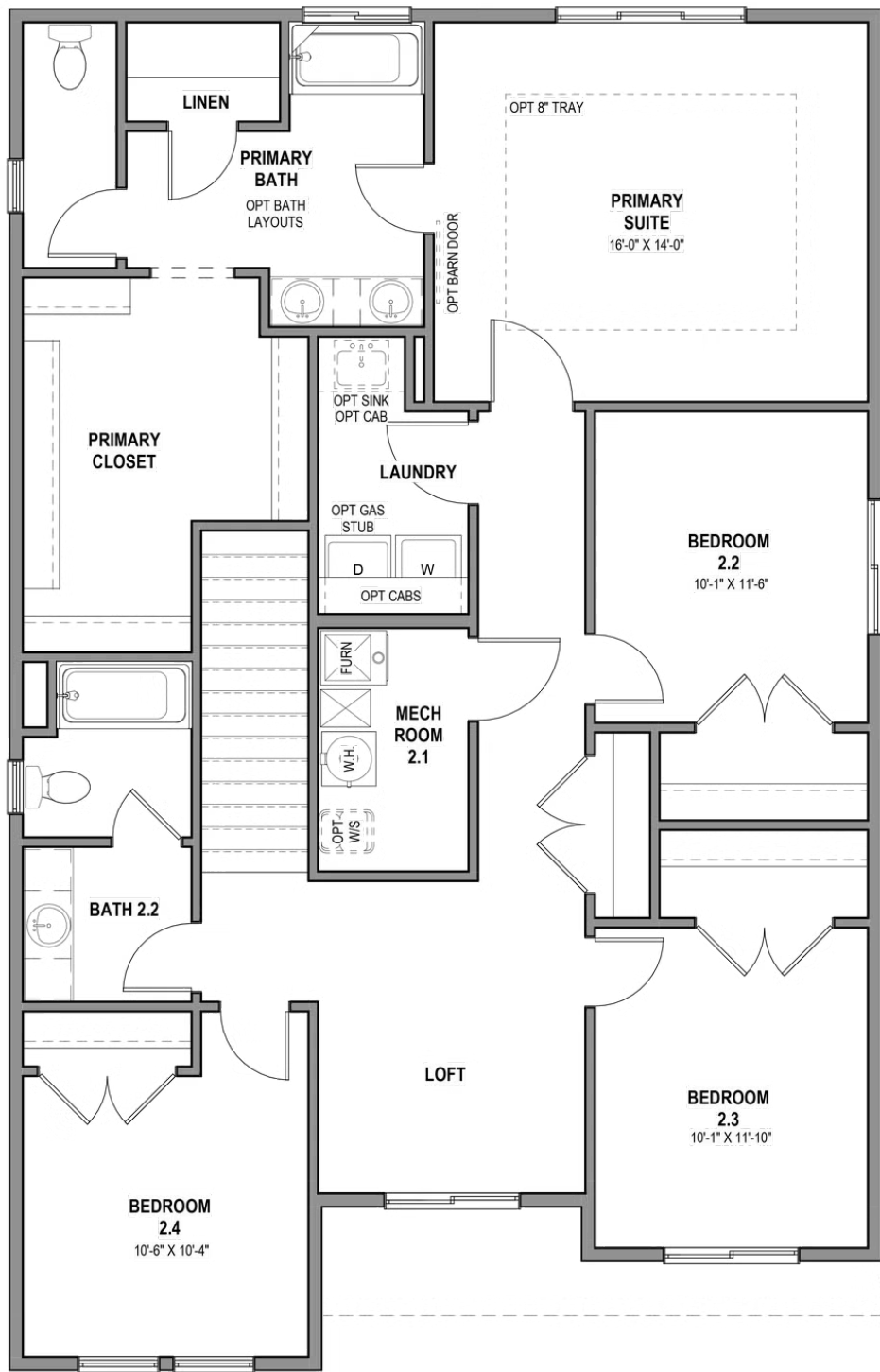


\*Visionary Homes reserves the right to change prices without notice. Approximate square footage and options shown in plan may not be included in base price.



www.visionaryhomes.com

UPPER LEVEL



\*Visionary Homes reserves the right to change prices without notice. Approximate square footage and options shown in plan may not be included in base price.