

www.visionaryhomes.com



Prickly Pear

3 Elevations Available

 2,237 Total Sq.Ft.

 2,237 Finished Sq.Ft.

 No Basement

 3 - 4 Bedrooms

 2.5 Bathrooms

 2 - 3 Car Garage

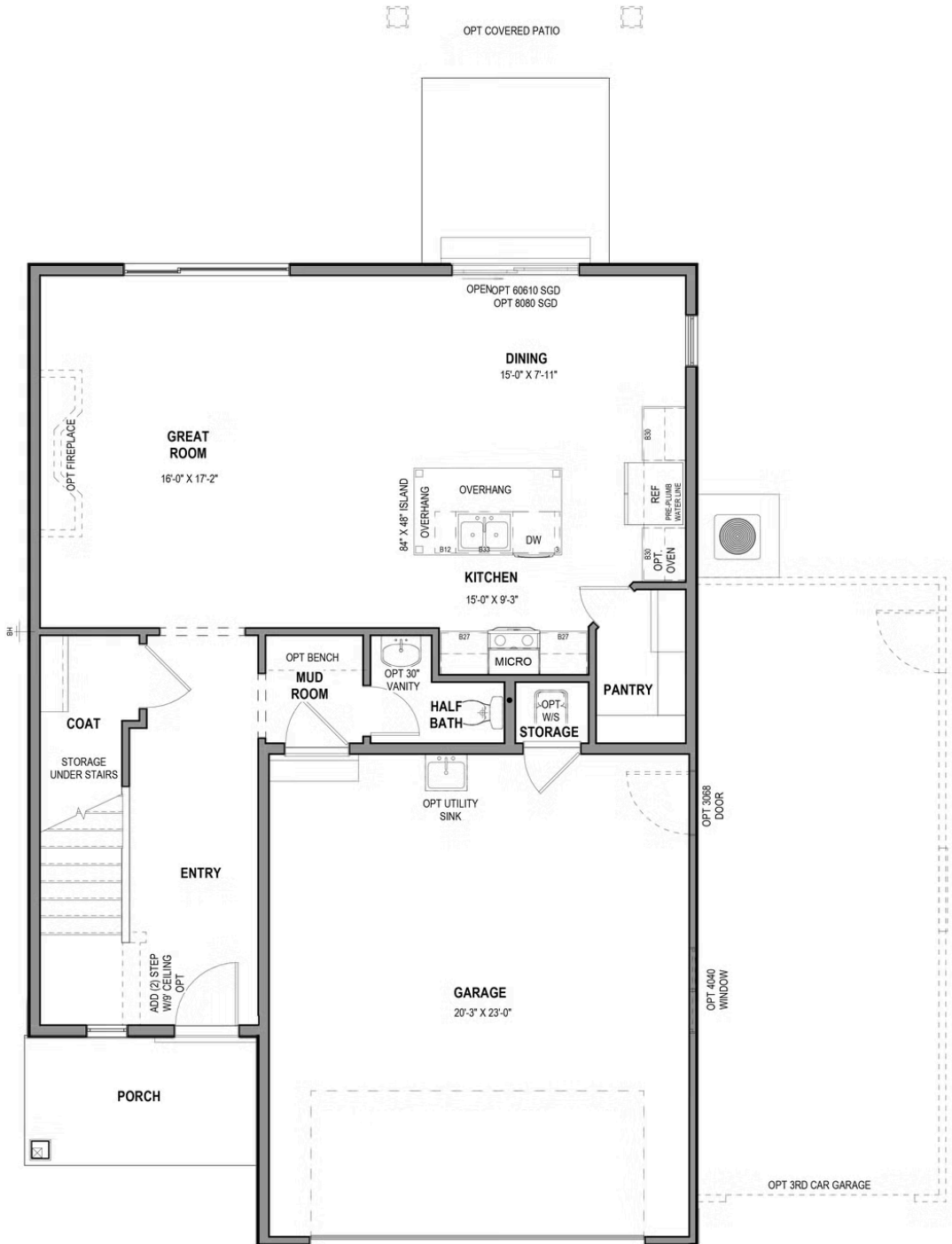
Feel right at home in The Prickly Pear cottage floor plan! This charming 3–4 bedroom, 2.5-bath home welcomes you from a covered front porch into an open-to-above entryway, complete with a staircase leading upstairs and a convenient coat closet. Continue inside to find a mudroom with an optional bench and a nearby half-bath. At the back of the home, an open-concept main living area is filled with natural light from plentiful windows. The kitchen features a large island with a sink and dishwasher, along with a spacious walk-in pantry. Upstairs, you'll find a versatile loft space that can be converted into an additional bedroom if desired, allowing for flexible living options. The primary suite offers large windows, an ensuite bathroom with double vanities, and a walk-in closet. Also on the second floor are two additional bedrooms, a shared full bathroom, and a laundry room. Make The Prickly Pear your new home today! This is a slab-on-grade home.



*Visionary Homes reserves the right to change prices without notice. Approximate square footage and options shown in plan may not be included in base price.

435.228.4702
visionaryhomes.com

MAIN LEVEL



UPPER LEVEL

