

www.visionaryhomes.com



Tangerine

3 Elevations Available

2,478 Total Sq.Ft.

No Basement

4 Bedrooms

2.5 Bathrooms

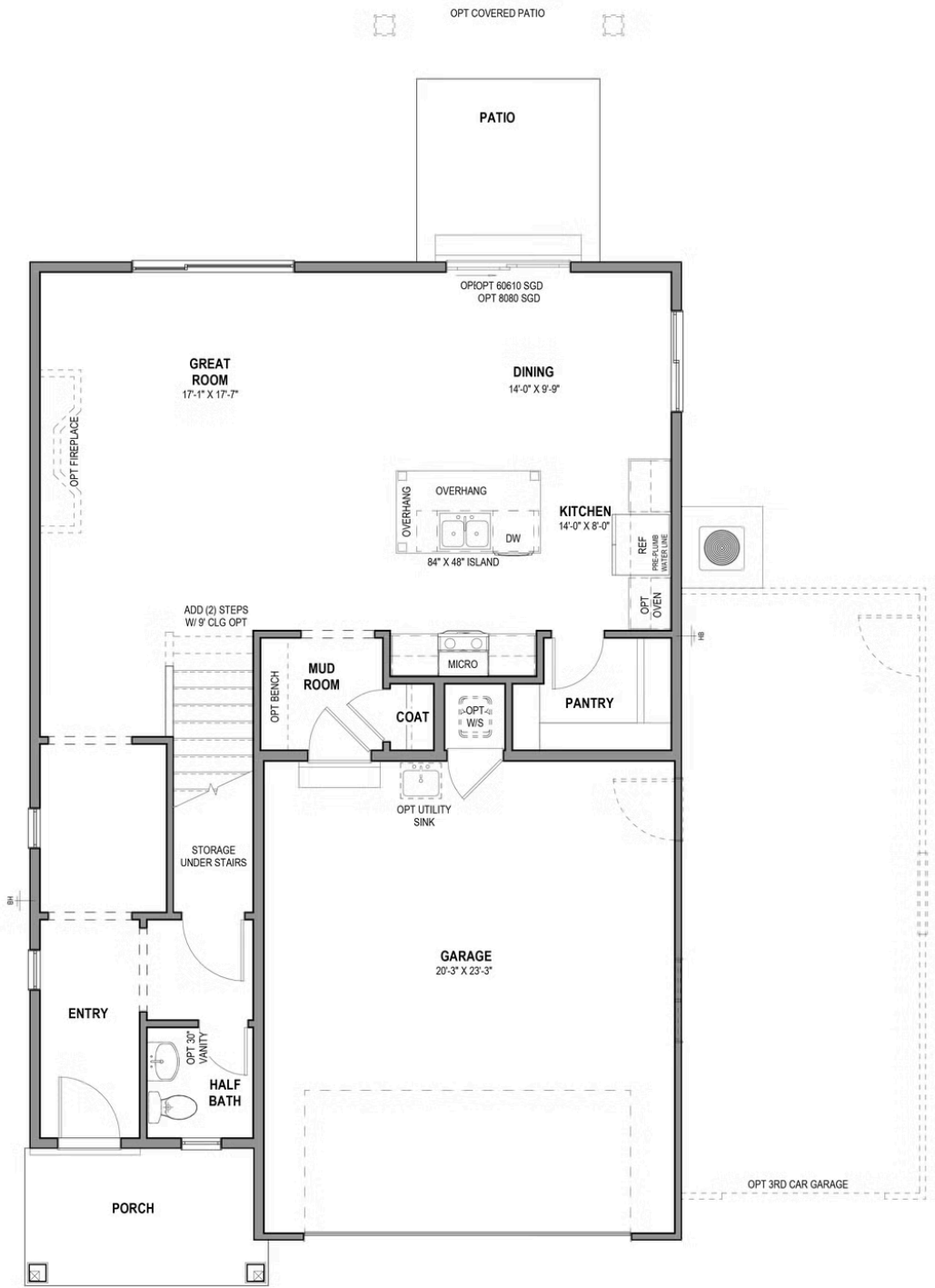
2 - 3 Car Garage

Welcome to The Tangerine cottage plan! This spacious 4-bedroom, 2.5-bath home welcomes you into a generous entryway, with a conveniently located half-bath just off the entrance. Through the entry hall, you'll find an open and inviting great room, kitchen, and dining areas—perfect for everyday living and entertaining. The kitchen features a large island with sinks and a huge walk-in pantry, while a nearby mud room sits just off the garage entrance for added functionality. Upstairs, you'll find a versatile loft area, three secondary bedrooms, and a shared full bathroom. At the end of the upstairs hallway, the primary suite offers a private retreat with a large ensuite bathroom and a walk-in closet. Make this spacious cottage plan yours today! This is a slab-on-grade home.



*Visionary Homes reserves the right to change prices without notice. Approximate square footage and options shown in plan may not be included in base price.

MAIN LEVEL



UPPER LEVEL

