

[www.visionaryhomes.com](http://www.visionaryhomes.com)



### Sale Price

**\$324,990**

 1,412 Sq.Ft.

 3 Bedrooms

 2 Car Garage

With a beautiful modern exterior, the Medford townhome offers up style and function for the ideal home, whether as a starter home, family home, or after retirement. The main floor showcases the living room, dining, kitchen with a walk-in pantry, and a half bath off garage. On the second floor there's a loft space for a reading nook, bedrooms, convenient laundry, and a large walk-in closet in the owner's suite of the owner's bathroom. With a total of 3 bedrooms, 2.5 bathrooms, and a 2-car garage. This home sits on a 0.02-acre lot. Located in the city of Logan, our Woodmore Pointe townhome community is tucked within the foothills of the Wellsville mountains, for the perfect blend of rural and city living. Woodmore Pointe offers quick access to Hwy 89, giving commuters to Salt Lake City and Logan a fast pass through Cache Valley.

#### Exterior Features:

- Grecian Ivory, Thunder Gray and Studio Clay Color Scheme
- Snowbound Board and Batten
- Cyberspace Lap Siding
- Harristone Slate Drystone Natural Mortar

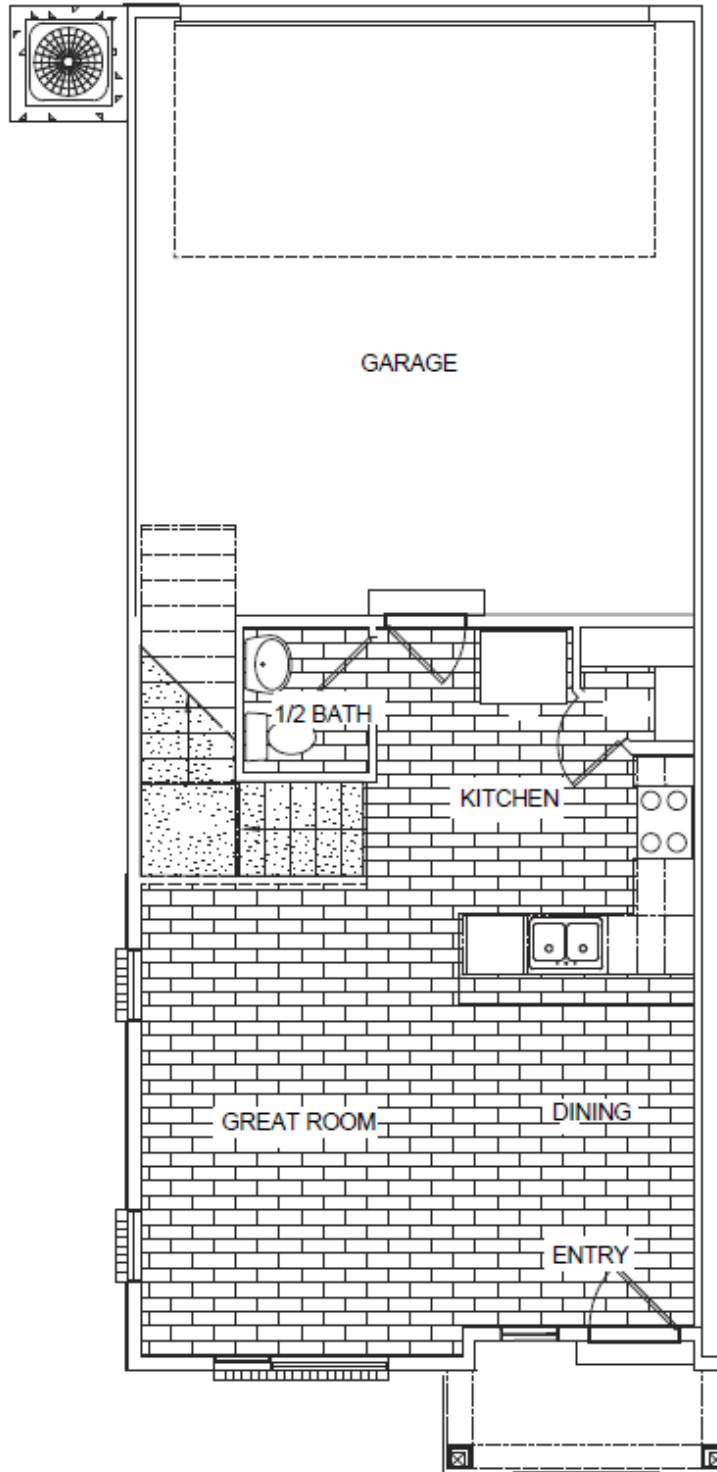
#### Interior Features:

- White Melamine Stainless Cabinets
- Quartz 2cm Frost Countertops
- Stainless Steel Appliances
- Hot Pursuit Carbon Crystal Plush Carpet

\*Visionary Homes reserves the right to change prices without notice.  
Approximate square footage and options shown in plan may not be included in base price.

**435.228.4702**  
[visionaryhomes.com](http://visionaryhomes.com)

## MAIN LEVEL- SLAB ON GRADE



## UPPER LEVEL

