

www.visionaryhomes.com



Medford

4 Elevations Available

 1,476 Total Sq.Ft.

 3 Bedrooms

 2.5 Bathrooms

 2 Car Garage

With a beautiful modern exterior, the Medford townhome offers up style and function for the ideal home, whether as a starter home, family home, or after retirement. The main floor showcases the living room, dining, kitchen with a walk-in pantry, and a half bath off garage. On the second floor there's a loft space for a reading nook, bedrooms, convenient laundry, and a large walk-in closet in the owner's suite off the owner's bathroom. With a total of 3 bedrooms, 2.5 bathrooms, and a 2-car garage.



Front



Side



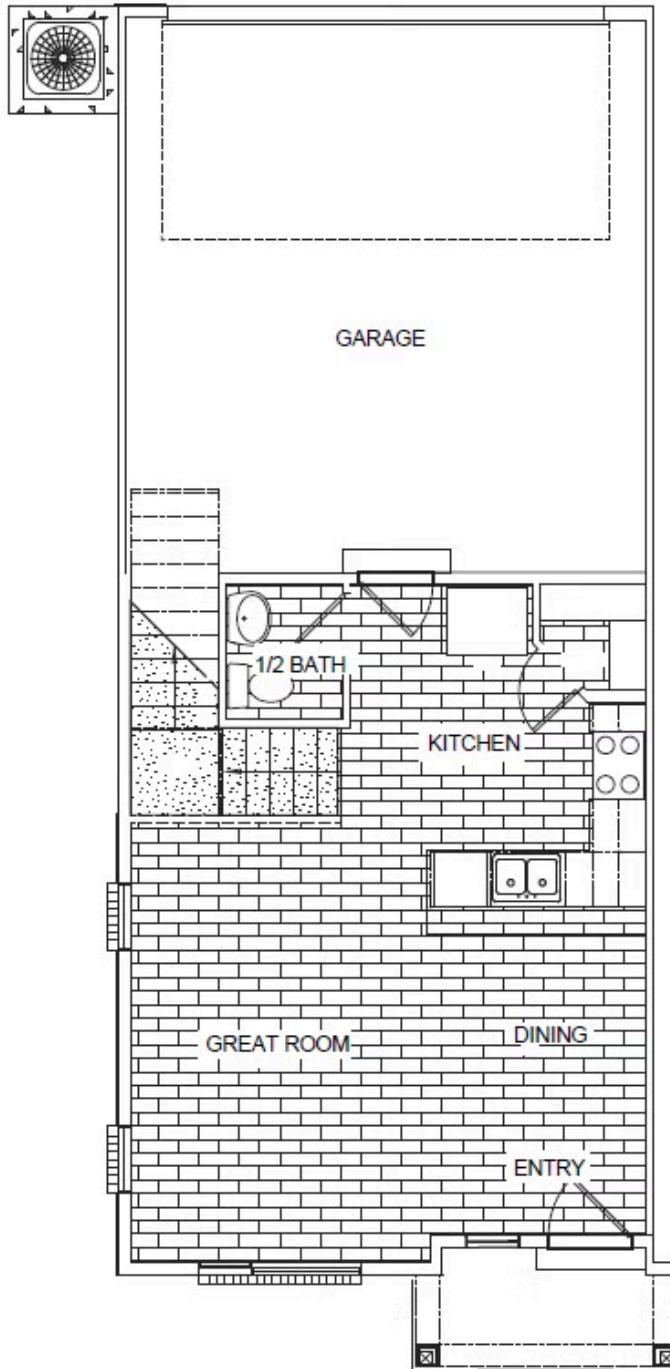
Back

www.visionaryhomes.com



Front Left

MAIN LEVEL- SLAB ON GRADE



UPPER LEVEL

