

www.visionaryhomes.com

Medford

4 Elevations Available

 1,476 Total Sq.Ft.

 3 Bedrooms

 2.5 Bathrooms

 2 Car Garage

With a beautiful modern exterior, the Medford townhome offers up style and function for the ideal home, whether as a starter home, family home, or after retirement. The main floor showcases the living room, dining, kitchen with a walk-in pantry, and a half bath off garage. On the second floor there's a loft space for a reading nook, bedrooms, convenient laundry, and a large walk-in closet in the owner's suite off the owner's bathroom. With a total of 3 bedrooms, 2.5 bathrooms, and a 2-car garage.



*Visionary Homes reserves the right to change prices without notice.
Approximate square footage and options shown in plan may not be included in base price.

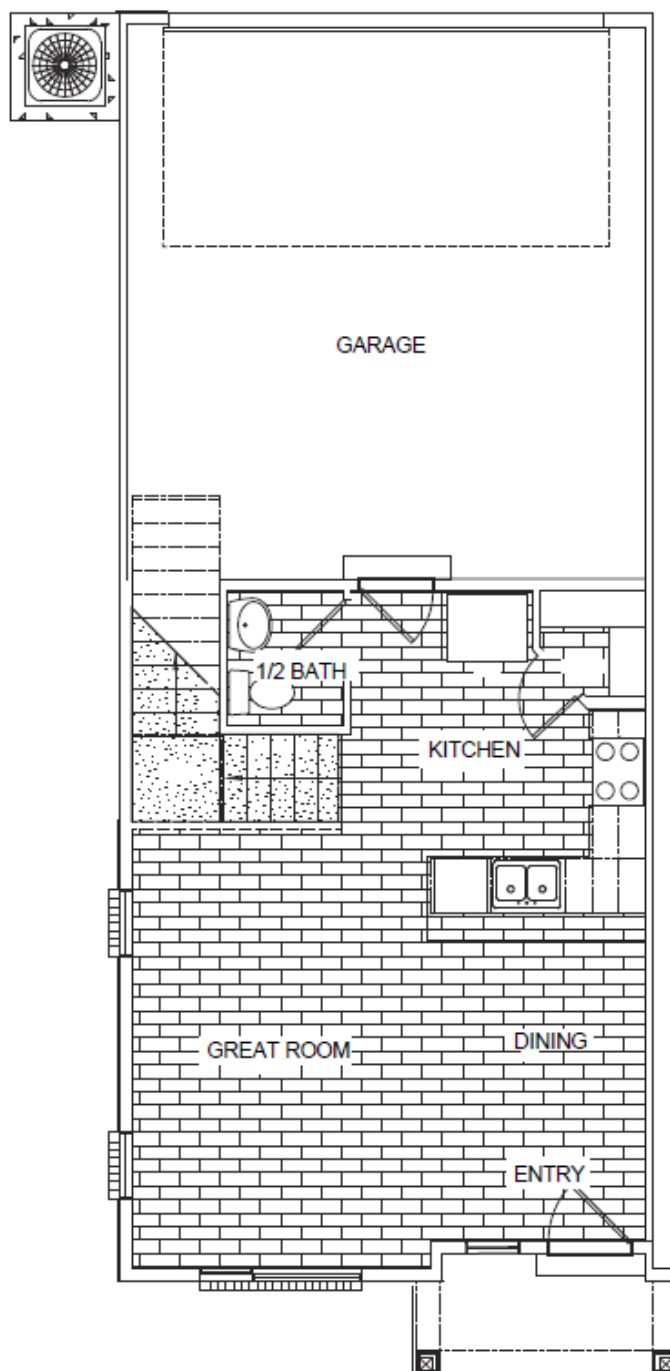
435.228.4702
visionaryhomes.com

www.visionaryhomes.com



www.visionaryhomes.com

MAIN LEVEL- SLAB ON GRADE

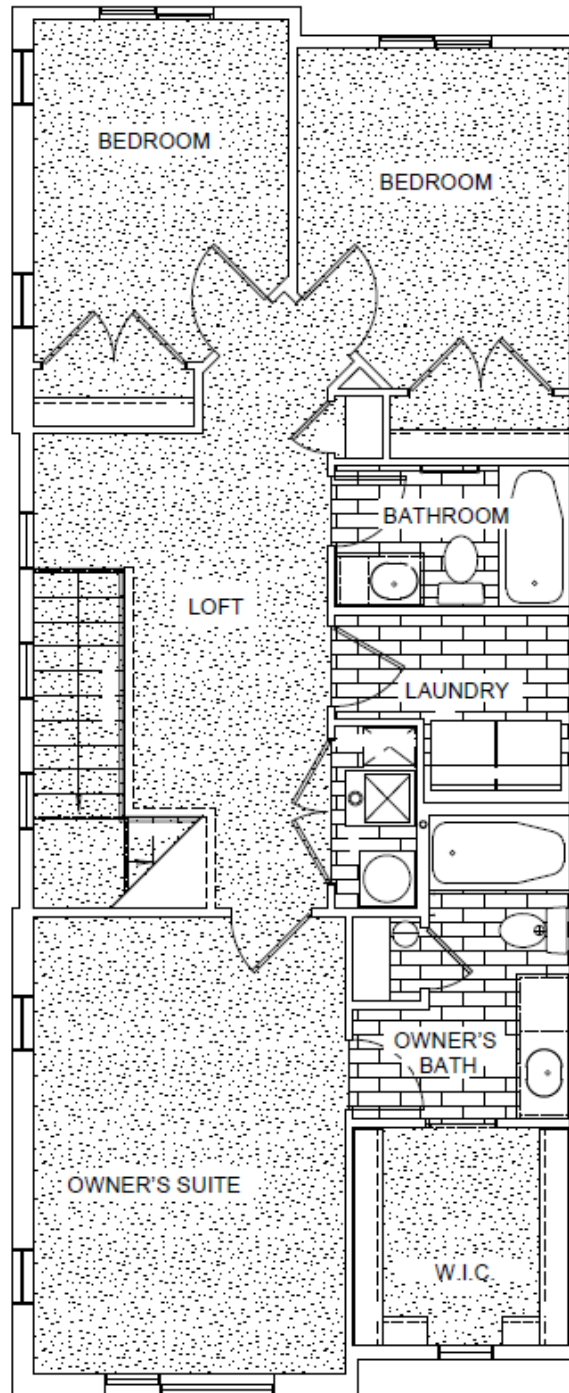


*Visionary Homes reserves the right to change prices without notice.
Approximate square footage and options shown in plan may not be included in
base price.

435.228.4702
visionaryhomes.com

www.visionaryhomes.com

UPPER LEVEL



*Visionary Homes reserves the right to change prices without notice.
Approximate square footage and options shown in plan may not be included in
base price.

435.228.4702
visionaryhomes.com