

[www.visionaryhomes.com](http://www.visionaryhomes.com)



## Ruston

5 Elevations Available

 1,145 Total Sq.Ft.

 2 Bedrooms

 2.5 Bathrooms

 1 Car Garage

With an open concept floor plan, the Ruston townhome design is modern and functional. Enter in to discover the living space, dining and kitchen with gorgeous granite countertops. A powder bath off the connected garage offers convenience on the main level. Upstairs you'll find a spacious owner's suite with an owner's bath, large walk-in closet, and much-needed additional storage space. The other bedroom also features it's own bathroom and walk-in closet, perfect for anyone from a roommate to your teen. The laundry room is also perfectly placed on the upper floor to do your laundry with ease.



Front



Back



Left

[www.visionaryhomes.com](http://www.visionaryhomes.com)



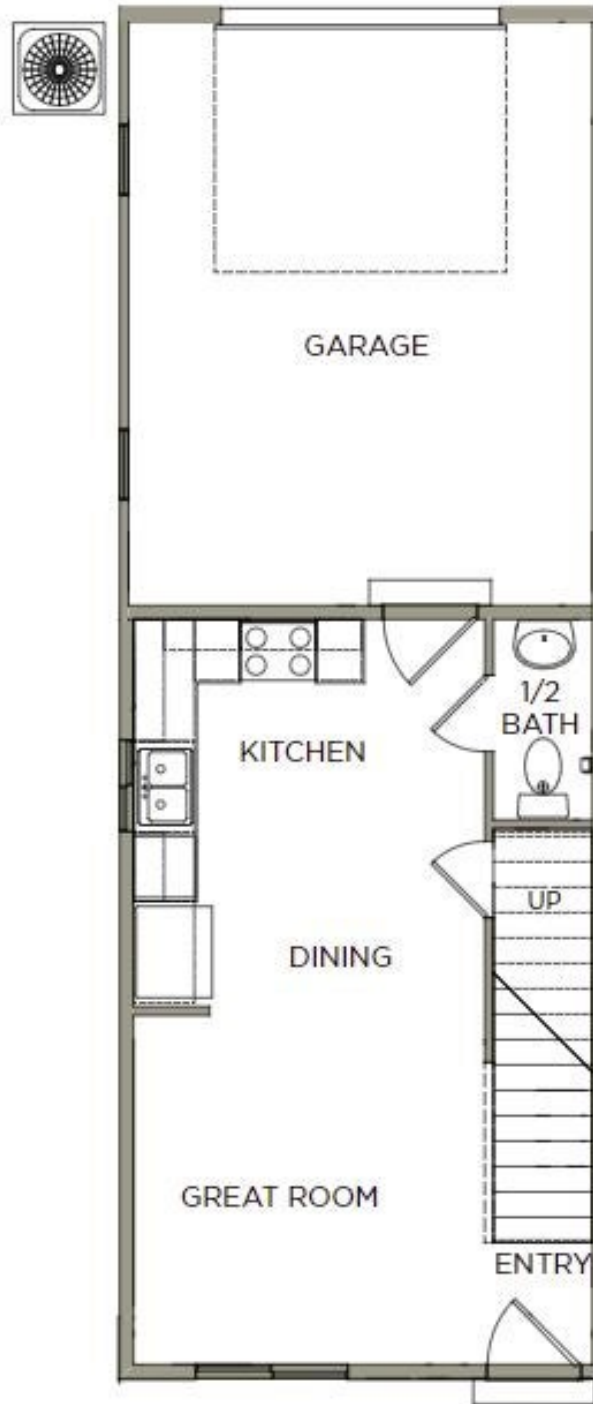
Side



Side

[www.visionaryhomes.com](http://www.visionaryhomes.com)

**MAIN LEVEL- SLAB ON GRADE**



\*Visionary Homes reserves the right to change prices without notice.  
Approximate square footage and options shown in plan may not be included in base price.

[www.visionaryhomes.com](http://www.visionaryhomes.com)

UPPER LEVEL



\*Visionary Homes reserves the right to change prices without notice.  
Approximate square footage and options shown in plan may not be included in base price.