

www.visionaryhomes.com


Aberdeen

3 Elevations Available

 3,502 Total Sq.Ft.

 2,478 Finished Sq.Ft.

 4 - 7 Bedrooms

 2.5 - 3 Bathrooms

 2 - 3 Car Garage

With an open concept layout, 4 bedrooms, 2.5 bathrooms, and a 2-car garage, the Aberdeen is perfect for you and your family. The Aberdeen also includes a flex room off the entry, a mudroom and a half bath near garage, as well as walk-in pantry within the kitchen. Upstairs you'll discover a loft space, spacious primary bedroom and bath, convenient upstairs laundry, bedrooms, and a bathroom. You and your family will love each of life's moments in this uplifting, spacious layout! With quality finishes and an unfinished basement that offers potential for future rooms, the Aberdeen provides the perfect blend of space, style, and sophistication for families seeking to upgrade to their dream home.



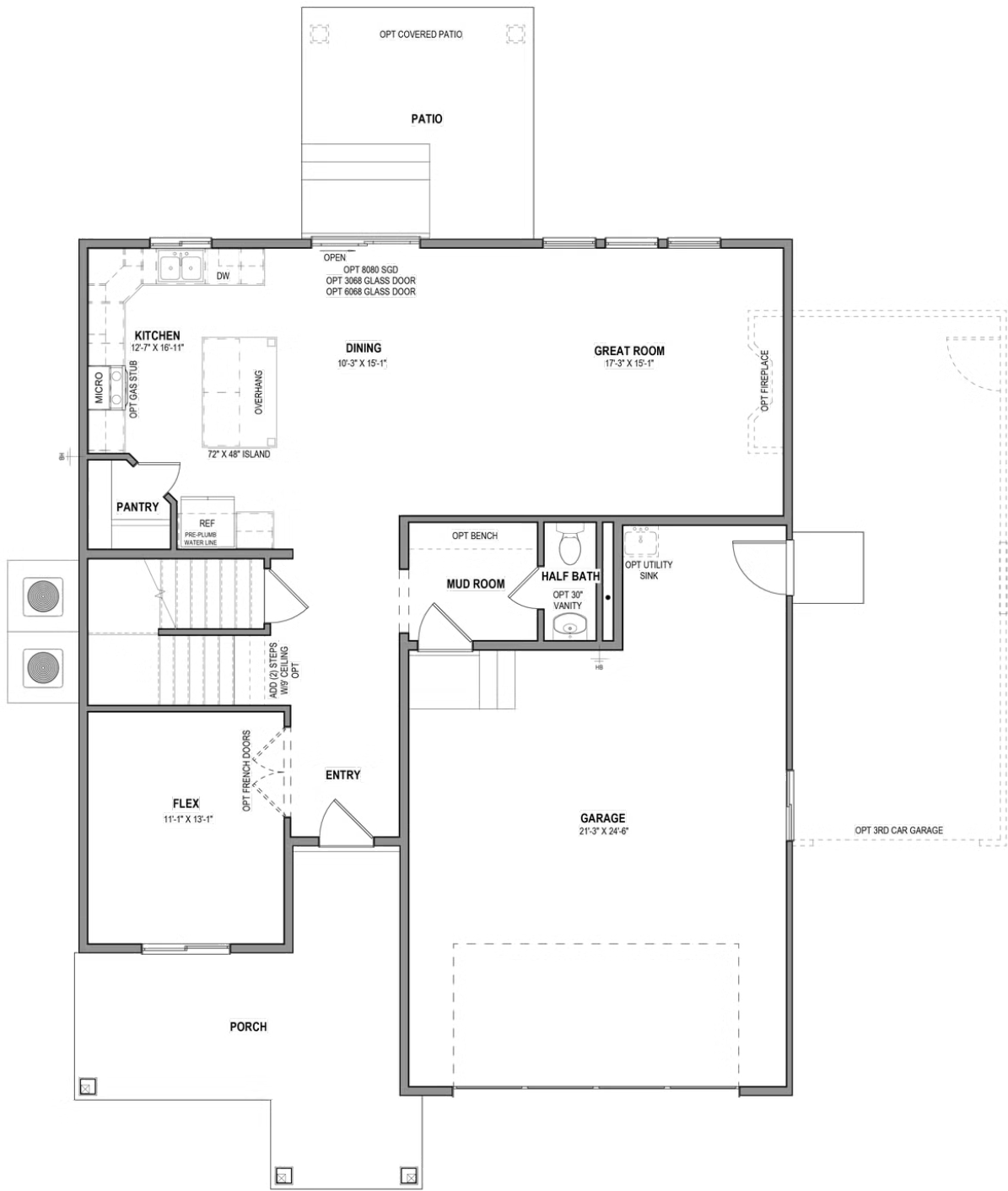
*Visionary Homes reserves the right to change prices without notice. Approximate square footage and options shown in plan may not be included in base price.

435.228.4702
visionaryhomes.com



www.visionaryhomes.com

MAIN LEVEL W/ UNFINISHED BASEMENT

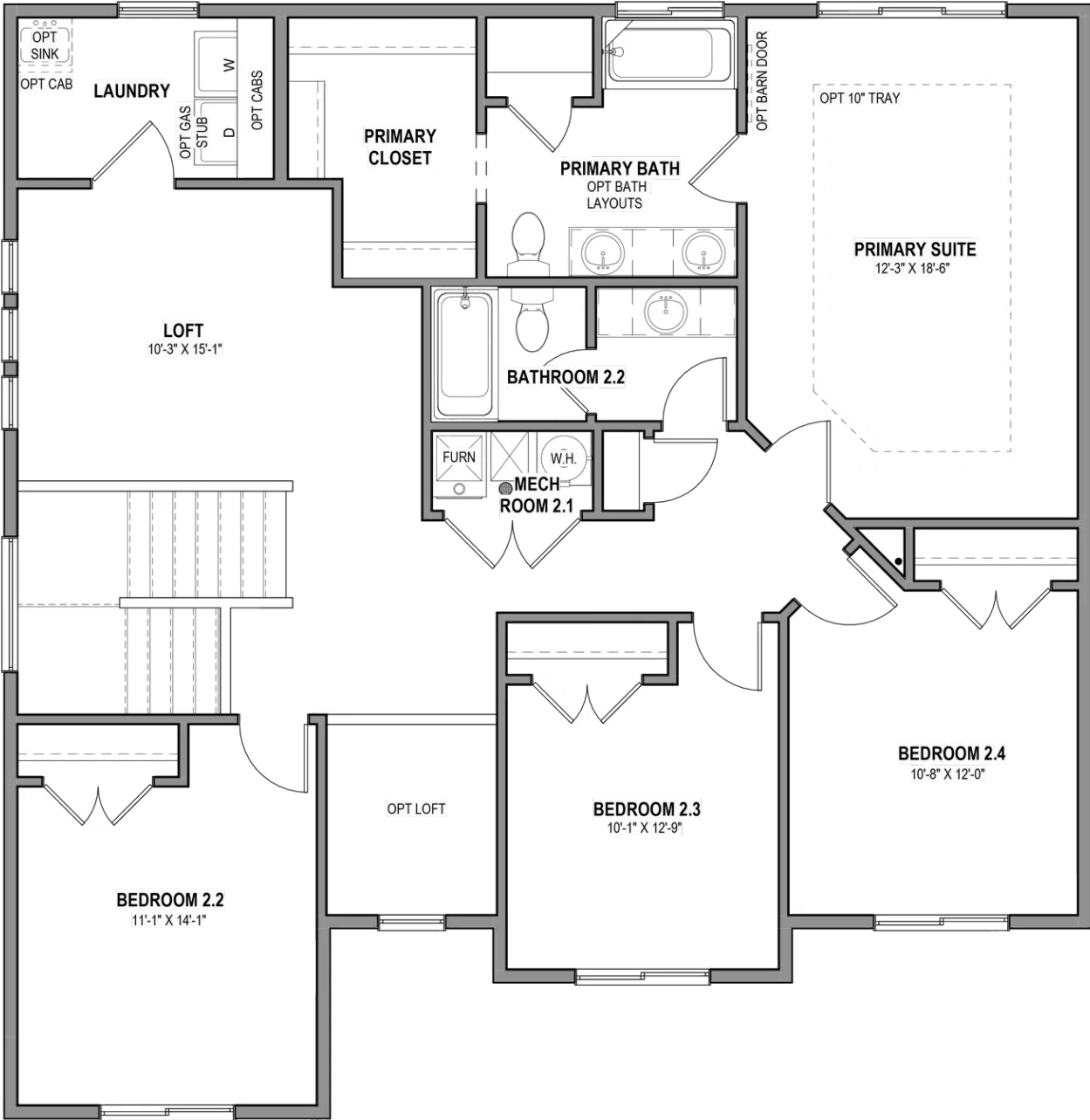


*Visionary Homes reserves the right to change prices without notice. Approximate square footage and options shown in plan may not be included in base price.



www.visionaryhomes.com

UPPER LEVEL

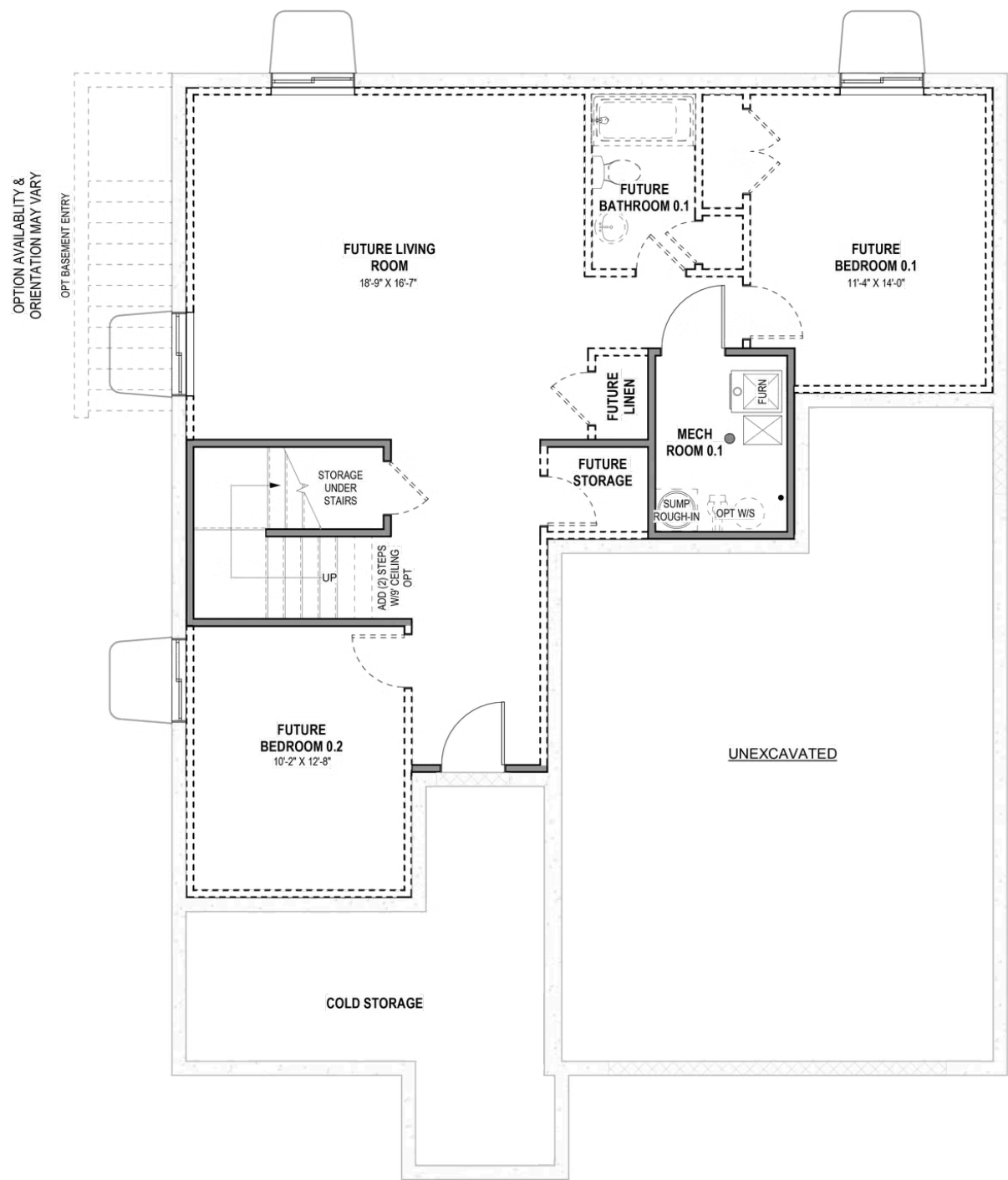


*Visionary Homes reserves the right to change prices without notice. Approximate square footage and options shown in plan may not be included in base price.



www.visionaryhomes.com

UNFINISHED BASEMENT



*Visionary Homes reserves the right to change prices without notice. Approximate square footage and options shown in plan may not be included in base price.