

www.visionaryhomes.com


Glendale

3 Elevations Available

 3,275 Total Sq.Ft.

 2,230 Finished Sq.Ft.

 3 - 7 Bedrooms

 2.5 - 3 Bathrooms

 2 - 3 Car Garage

With a stylish exterior and functional design, our Glendale floor plan is built with families in mind. The main floor includes a large great room, dining, kitchen, and mudroom with a half bath. Off the main entry you'll discover a flex room and stairs leading to the second level bedrooms. Upstairs hosts a spacious loft area, laundry room, two bedrooms and the primary bedroom with a primary bathroom and large walk-in closet. With a total of 3 bedrooms and 2.5 bathrooms, along with a spacious, open-concept design, and an unfinished basement for additional finishing potential, this floor plan will accommodate the needs of your family for years to come.



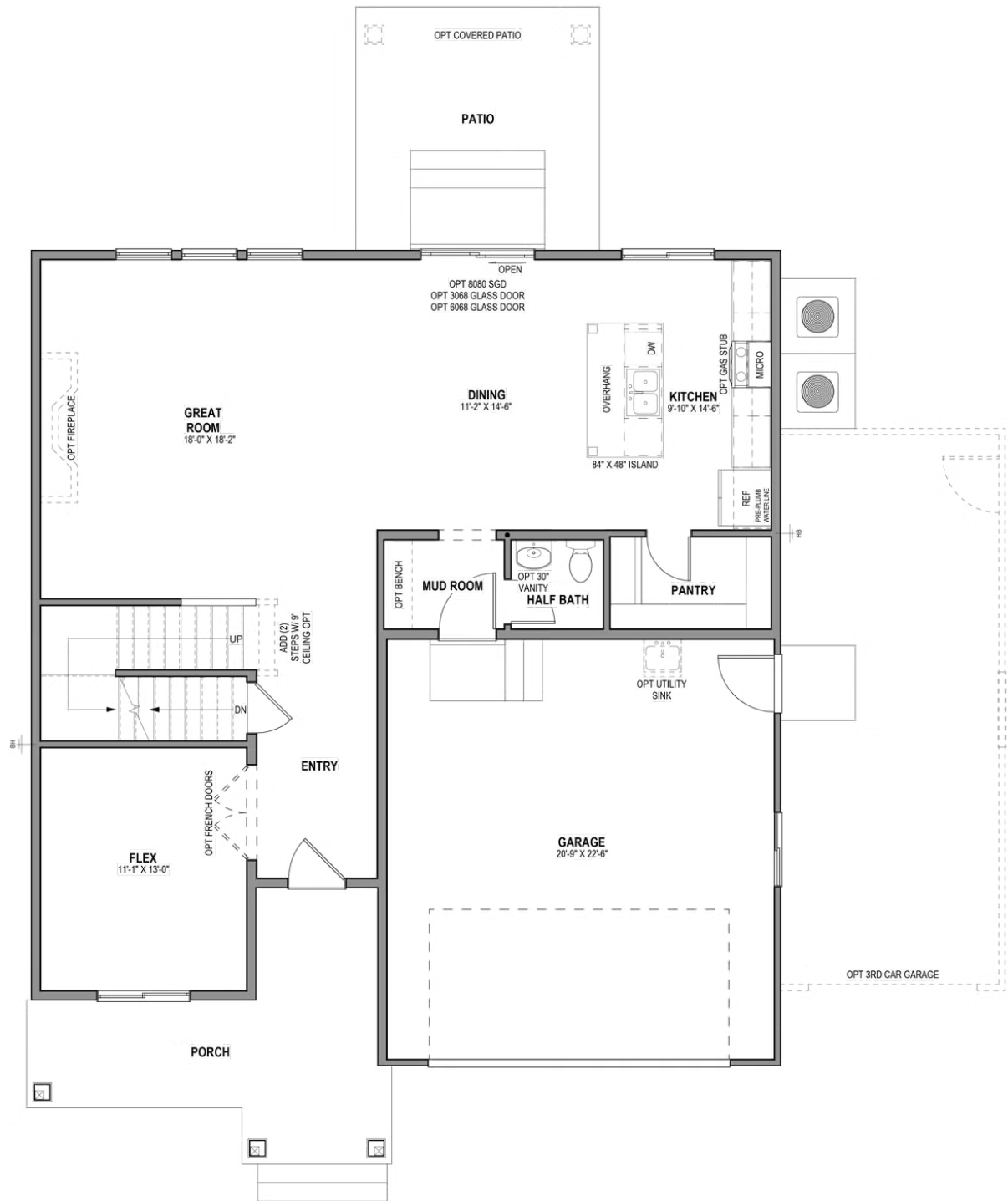
*Visionary Homes reserves the right to change prices without notice. Approximate square footage and options shown in plan may not be included in base price.

435.228.4702
visionaryhomes.com



www.visionaryhomes.com

MAIN LEVEL W/ UNFINISHED BASEMENT

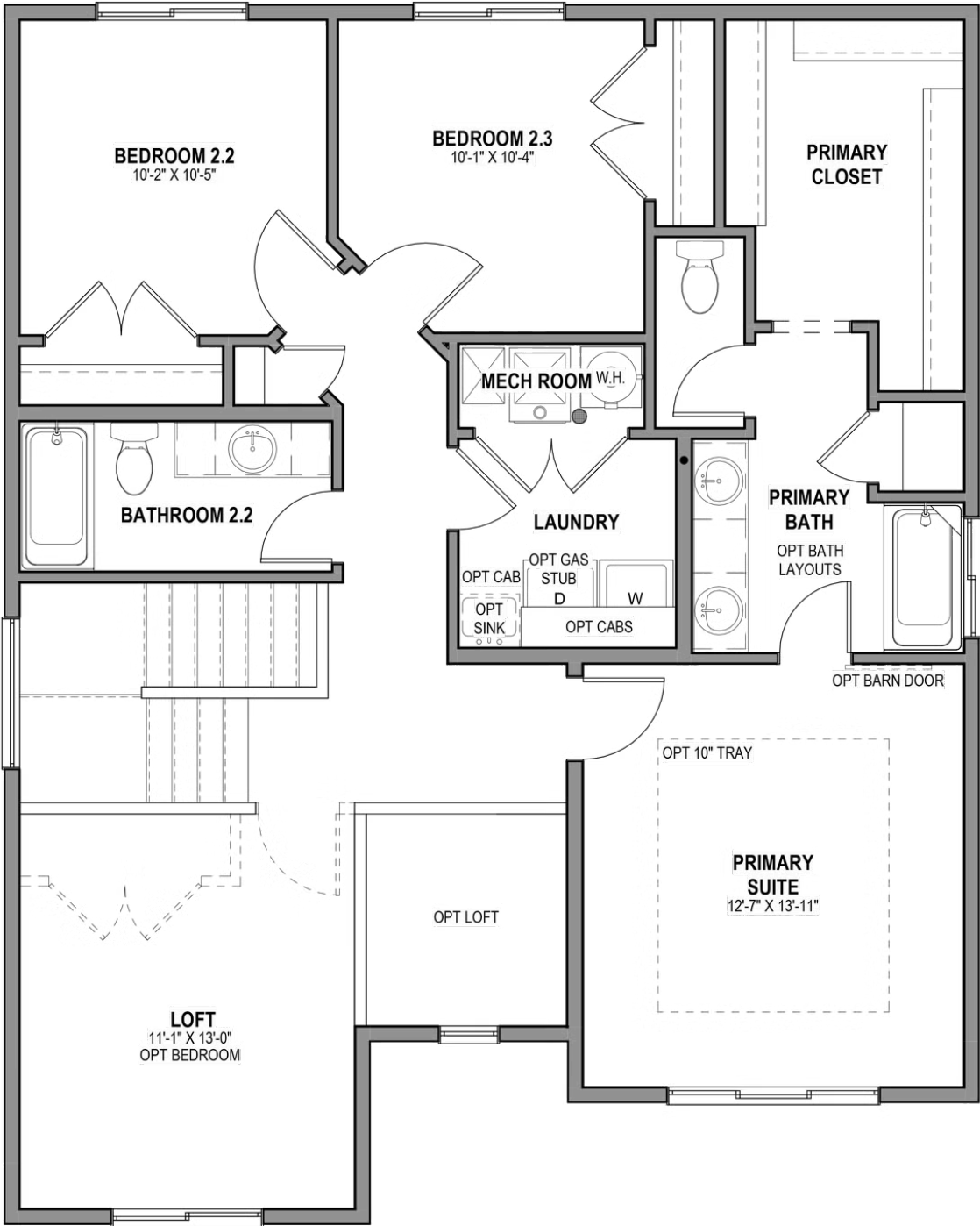


*Visionary Homes reserves the right to change prices without notice. Approximate square footage and options shown in plan may not be included in base price.



www.visionaryhomes.com

UPPER LEVEL

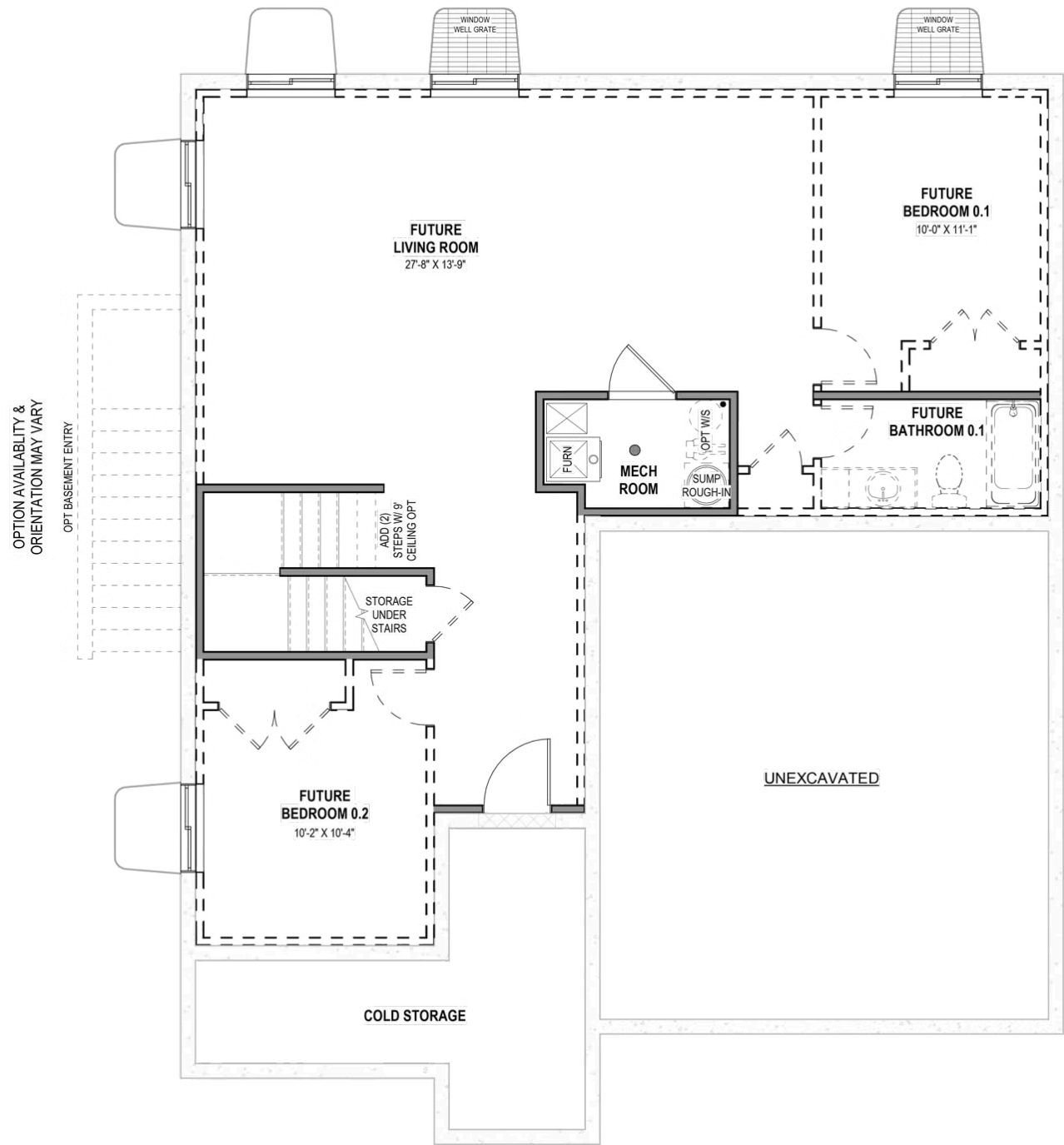


*Visionary Homes reserves the right to change prices without notice. Approximate square footage and options shown in plan may not be included in base price.



www.visionaryhomes.com

UNFINISHED BASEMENT



*Visionary Homes reserves the right to change prices without notice. Approximate square footage and options shown in plan may not be included in base price.