

[www.visionaryhomes.com](http://www.visionaryhomes.com)


## Summerlyn

3 Elevations Available

 3,792 Total Sq.Ft.

 1,928 Finished Sq.Ft.

 3 - 7 Bedrooms

 2.5 - 3 Bathrooms

 2 - 3 Car Garage

One of our most popular floor plans, the Summerlyn's beautiful layout perfectly meets the needs of families looking for more space. Featuring 3 bedrooms and 2.5 bathrooms, the open concept floor plan features floor to ceiling windows that cast natural light over the living room, dining room, and kitchen. The gourmet kitchen is a culinary enthusiast's dream, complete with a large walk-in pantry. The dining and family room connect with the kitchen for you and your family to enjoy cooking, eating, and watching movies. Thoughtful touches abound throughout this floor plan, with ample closet space ensuring that organization is effortless and stylish. The exquisite primary bedroom features a luxurious primary bath and a spacious walk-in closet. With quality finishes and an unfinished basement that offers potential for future rooms, the Summerlyn provides the perfect home for families seeking to upgrade.



\*Visionary Homes reserves the right to change prices without notice. Approximate square footage and options shown in plan may not be included in base price.

**435.228.4702**  
[visionaryhomes.com](http://visionaryhomes.com)





www.visionaryhomes.com

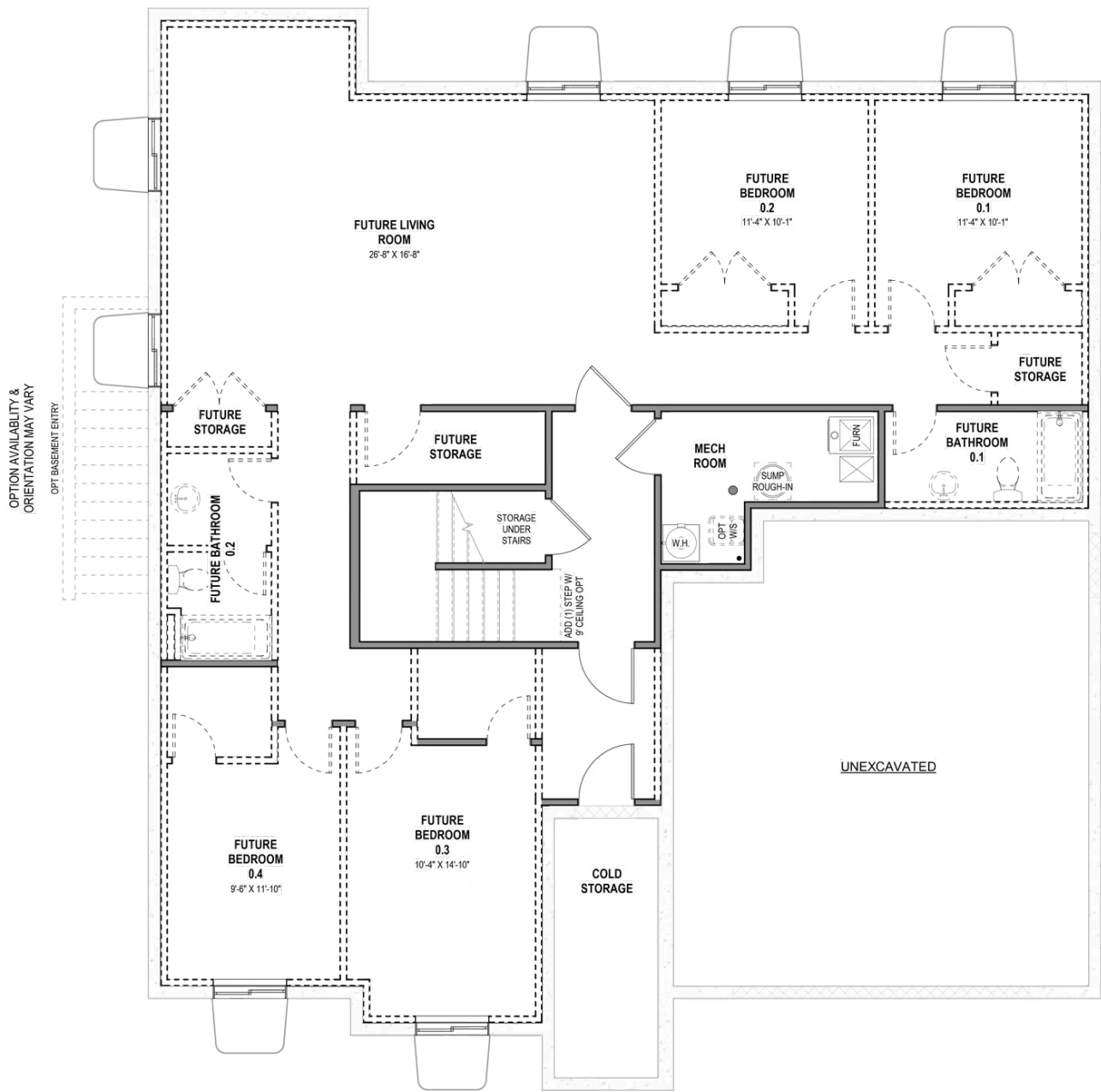
MAIN LEVEL W/ UNFINISHED BASEMENT



\*Visionary Homes reserves the right to change prices without notice. Approximate square footage and options shown in plan may not be included in base price.



UNFINISHED BASEMENT



\*Visionary Homes reserves the right to change prices without notice. Approximate square footage and options shown in plan may not be included in base price.