

www.visionaryhomes.com


Aberdeen

3 Elevations Available

 3,577 Total Sq.Ft.

 2,549 Finished Sq.Ft.

 4 - 7 Bedrooms

 2.5 - 3 Bathrooms

 2 - 3 Car Garage

The Aberdeen floor plan showcases a stylish and functional design with an open concept layout, flex room off entry, mudroom and half bath near garage, and a walk-in pantry within the kitchen. With 4 bedrooms, 2.5 baths, and a 2-car garage, this floor plan offers you and your family a space you'll love. Upstairs you'll discover a loft space, spacious owner's suite and bath, convenient upstairs laundry, bedrooms, and a bathroom. If needed, an optional finished basement can feature additional bedrooms, a bathroom, flex room, and family room for family movie nights.



Farmhouse

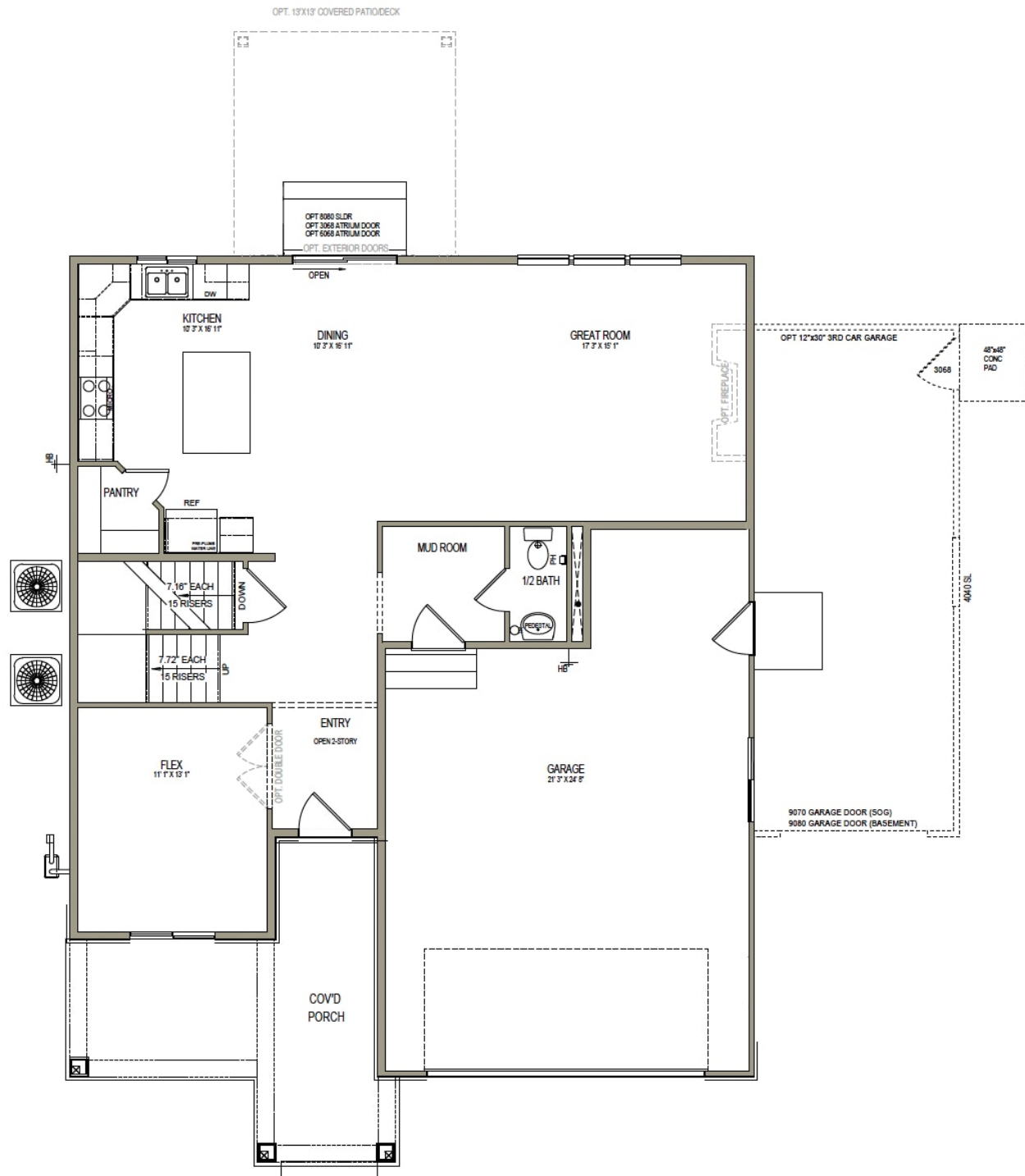


Farmhouse

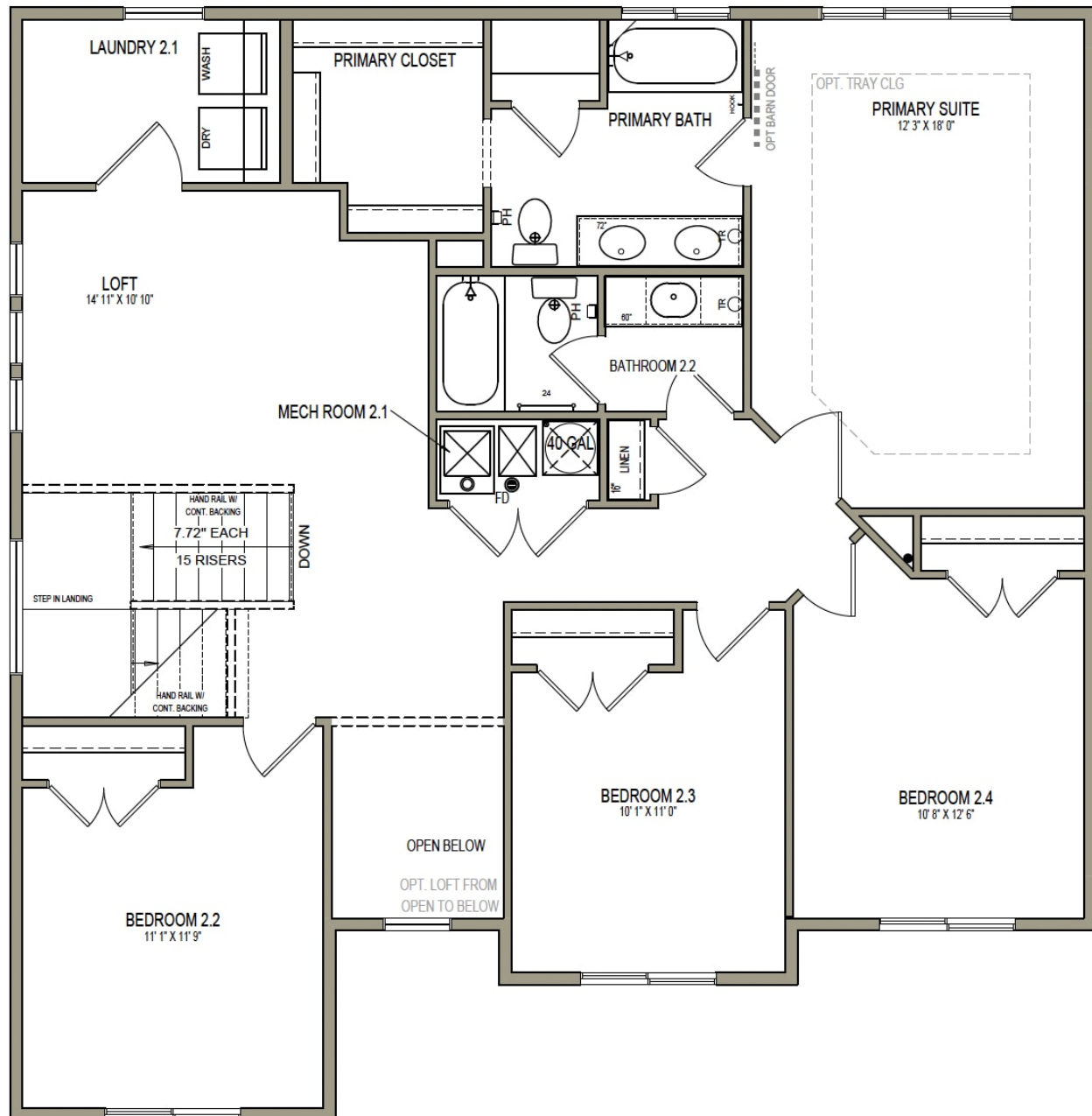


Traditional w/Stucco

MAIN LEVEL W/UNFINISHED BASEMENT



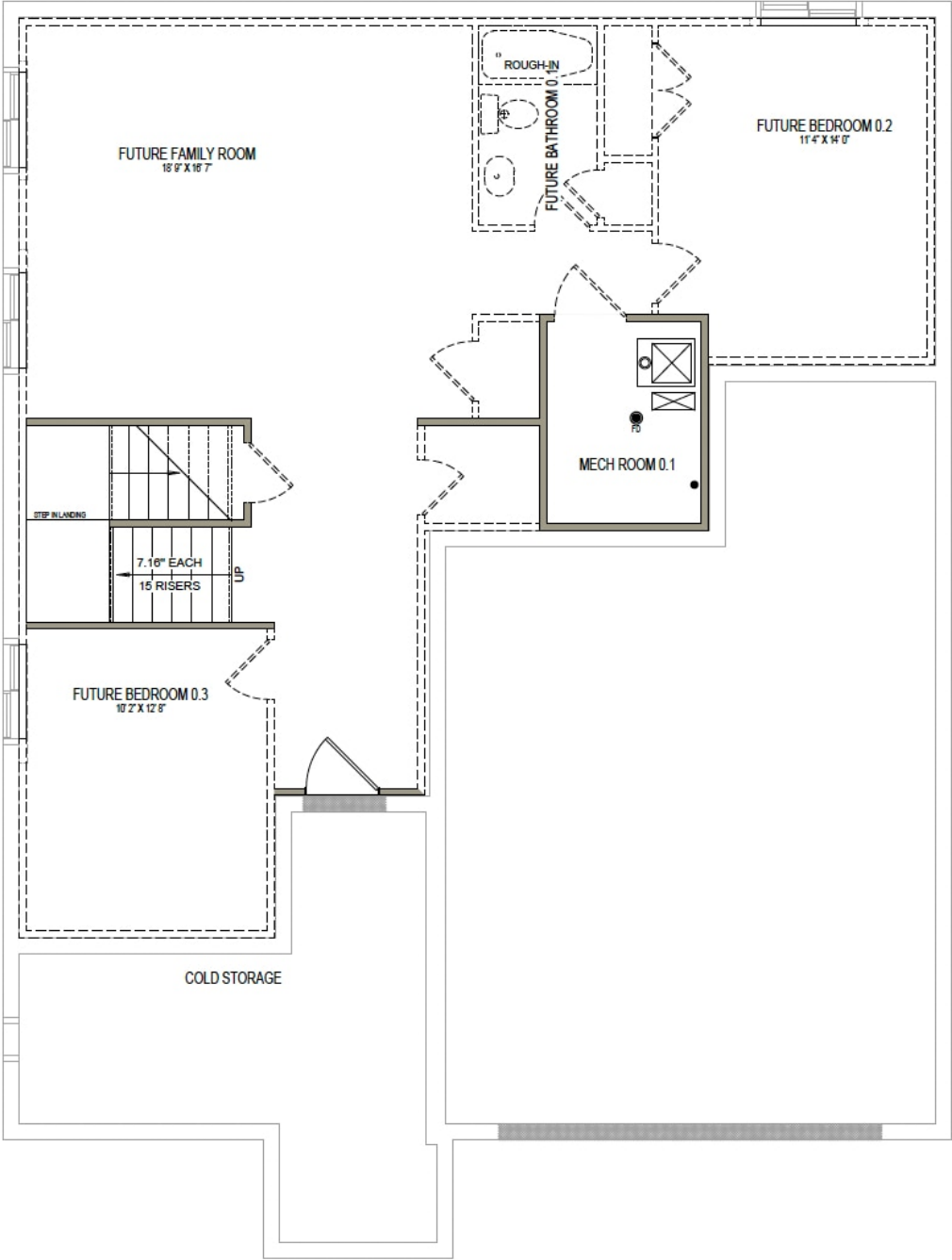
UPPER LEVEL





www.visionaryhomes.com

UNFINISHED BASEMENT



*Visionary Homes reserves the right to change prices without notice.
Approximate square footage and options shown in plan may not be included in base price.