




[www.visionaryhomes.com](http://www.visionaryhomes.com)



**Sale Price**

**\$459,990**

 1,455 Sq.Ft.

 3 Bedrooms

 3 Car Garage

Welcome to The Hayden rambler in our charming Ridgeline Park Active Adult community! This quick-move-in home includes 3 bedrooms and 2 bathrooms, 3 car garage, and an open-concept living space. It's the perfect home or older adults looking to downsize or live near kids and grandkids! Walk into the entry to discover a hallway to one side of the home to the bedrooms, laundry, and bathroom. In the main living area, the spacious great room, kitchen, and dining room are highlighted with large windows. In the kitchen, you'll find a large pantry and kitchen island for all your prepping and cooking needs. The primary suite right off the great room features a luxurious feel with an ensuite bath and walk-in closet you'll love.

**EXTERIOR FEATURES**

- .16 acre corner lot
- 3 car garage
- Covered front porch
- Traditional Stucco elevation

**INTERIOR FEATURES**

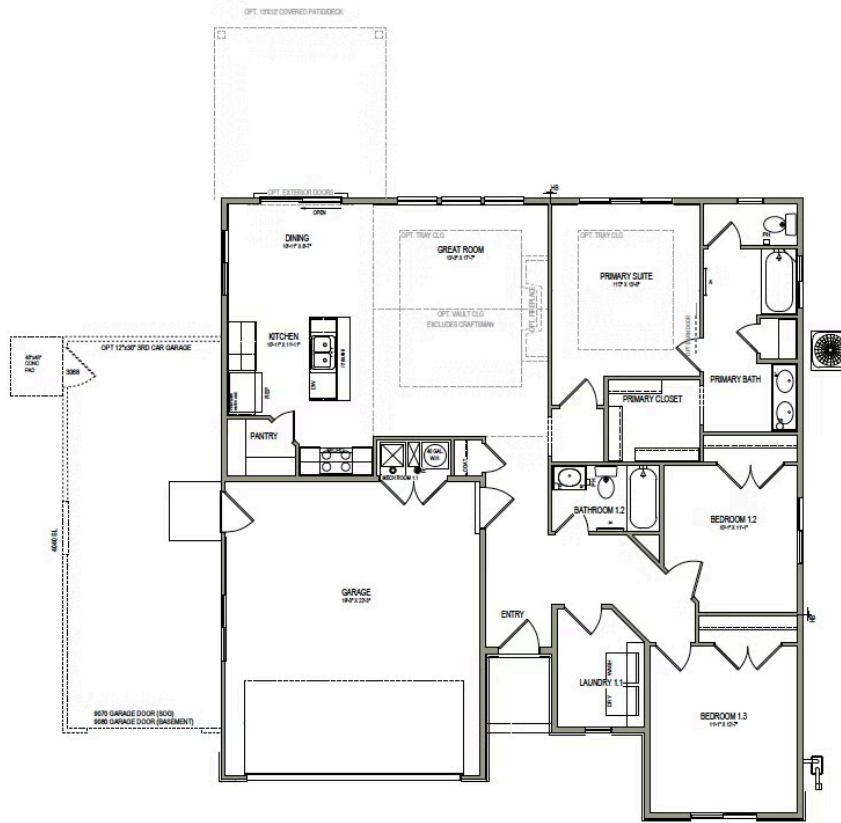
- 3 bedrooms, 2 bathrooms
- 9' ceilings on main floor
- Two toned kitchen cabinetry
- Quartz countertops throughout home
- Chrome hardware throughout home

\*Visionary Homes reserves the right to change prices without notice. Approximate square footage and options shown in plan may not be included in base price.

**435.228.4702**  
[visionaryhomes.com](http://visionaryhomes.com)



MAIN LEVEL- SLAB ON GRADE



\*Visionary Homes reserves the right to change prices without notice. Approximate square footage and options shown in plan may not be included in base price.

435.228.4702  
visionaryhomes.com