

www.visionaryhomes.com


Auburn

3 Elevations Available

 1,848 Total Sq.Ft.

 1,848 Finished Sq.Ft.

 No Basement

 3 Bedrooms

 2 Bathrooms

 2 - 3 Car Garage

The Auburn floor plan creates the perfect living space for you by situating the bedrooms right off the entry and main living space. The primary bedroom next to the great room includes a primary bathroom with a walk-in closet to fit your needs. A mudroom off the garage provides room for all your go-to necessities from keys to jackets and shoes, with the laundry nearby. In the kitchen, you'll find a large walk-in pantry and an island with a sink for the optimal cooking space. You and your family will enjoy maximum convenience and comfort with the 3 bed and 2 bath Auburn floor plan! This is a slab on grade home.



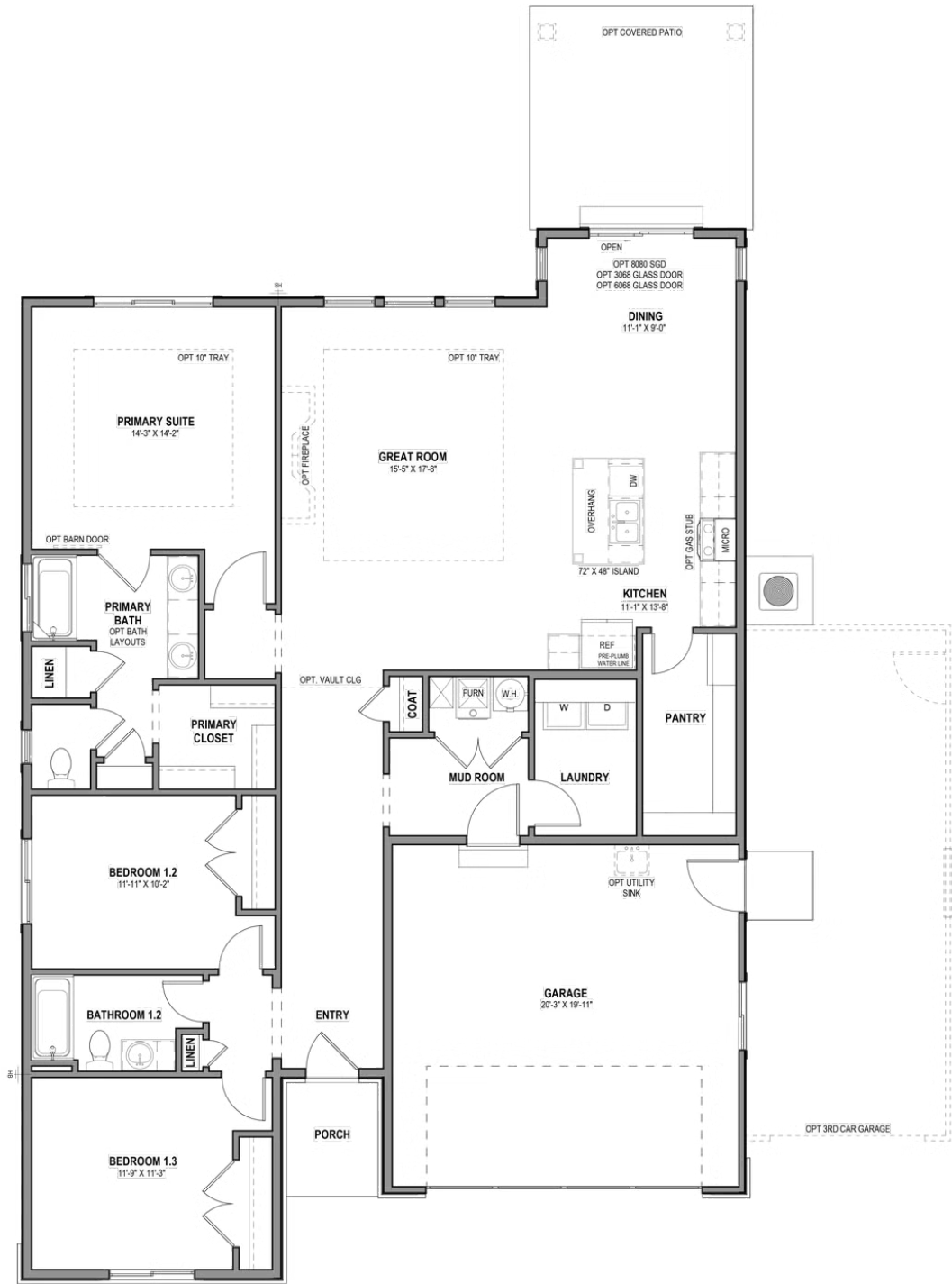
*Visionary Homes reserves the right to change prices without notice. Approximate square footage and options shown in plan may not be included in base price.

435.228.4702
visionaryhomes.com



www.visionaryhomes.com

MAIN LEVEL - SLAB ON GRADE



*Visionary Homes reserves the right to change prices without notice. Approximate square footage and options shown in plan may not be included in base price.