



www.visionaryhomes.com



Silver Creek

1 Elevations Available

 1,392 Total Sq.Ft.

 3 Bedrooms

 2 Bathrooms

 1 Car Garage

The Silver Creek plan offers 3 bedrooms, 2 baths, and a 1 car garage with ADA Compliance in a sought-after community. Including stainless steel appliances, granite countertops, and smart home technology, this floor plan has a modern interior and exterior. Walk into the living room open to the kitchen and dining space with a door out to the lovely balcony. Down the hall you'll find the laundry room, bathroom, and owner's suite with an owner's bath and spacious walk-in closet. Enjoy the incredible amenities included in this community and come home to the comfort of your own condo.

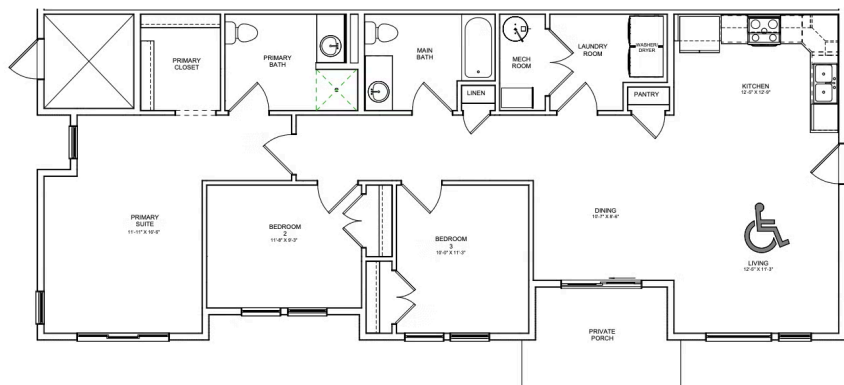


*Visionary Homes reserves the right to change prices without notice. Approximate square footage and options shown in plan may not be included in base price.

435.228.4702
visionaryhomes.com



www.visionaryhomes.com



*Visionary Homes reserves the right to change prices without notice. Approximate square footage and options shown in plan may not be included in base price.

435.228.4702
visionaryhomes.com