

www.visionaryhomes.com



Sale Price

\$None

 1,549 Sq.Ft.

 3 Bedrooms

 2 Car Garage

3147 South 225 West, Nibley, UT 84321

Enter into the Sitka townhome to discover an open concept main living space. This 2-story floor plan features 3 beds and 2.5 baths. The dining, family room, and kitchen on the main level provide the perfect space for your family to relax, cook, eat, and socialize. The kitchen includes a walk-in pantry and a wrap-around counter, where you can add a few stools for snack time or studying. Upstairs you'll discover a loft off the stairs, 2 bedrooms, bathroom, laundry room, and an owner's suite featuring an ensuite bath and spacious walk-in closet.

This model home is equipped with our self-guided home tour technology NterNow so you can Tour On Your Time! This model home is available to tour anytime between 8:00 AM - 10:00 PM. [Click here to learn more about Tour On Your Time!](#)

Call to Schedule a Private Tour 435-710-7937

If you're looking for your first home in Cache County, a Visionary home at Ridgeline Park Townhomes is the spot for you! When you're ready to create your dream home, we're here to help. Contact us today to request information about house plans in Nibley, Utah in our Ridgeline Park Townhome community.



Front View

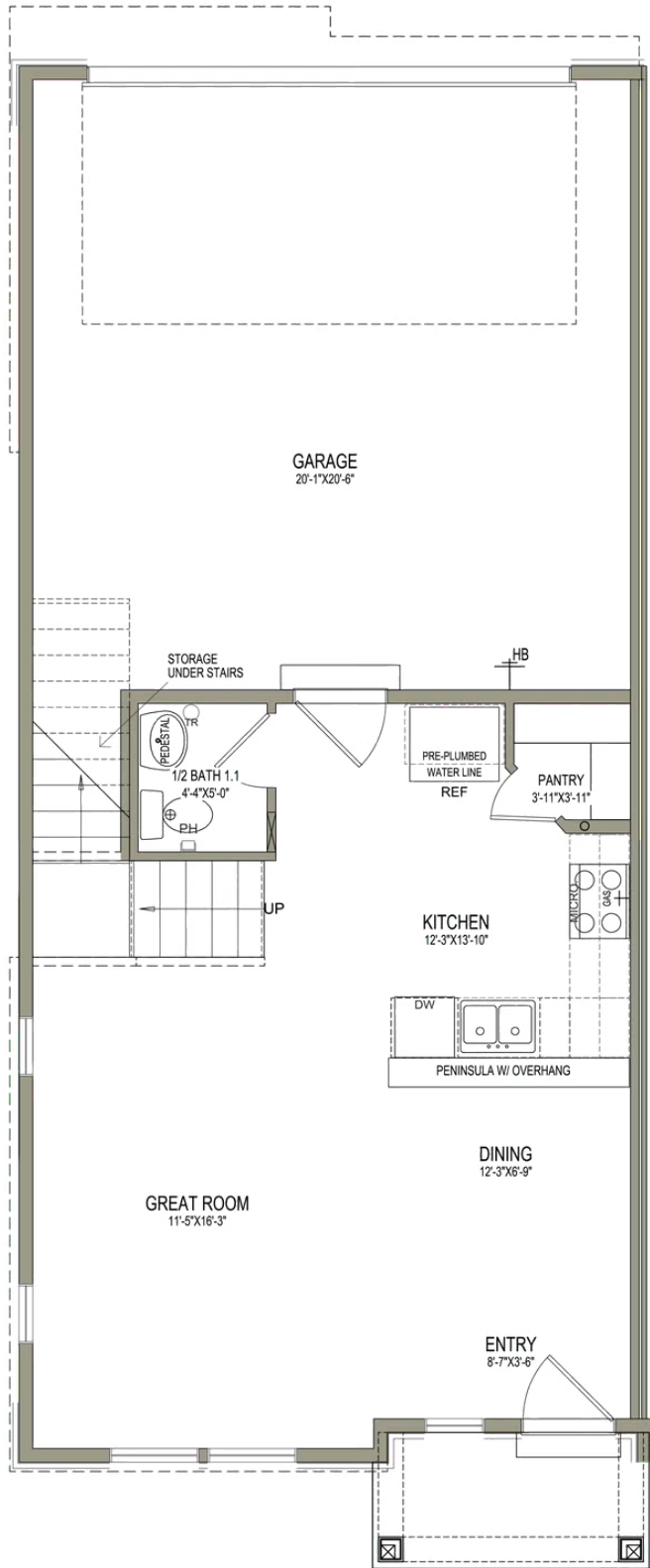


Side View

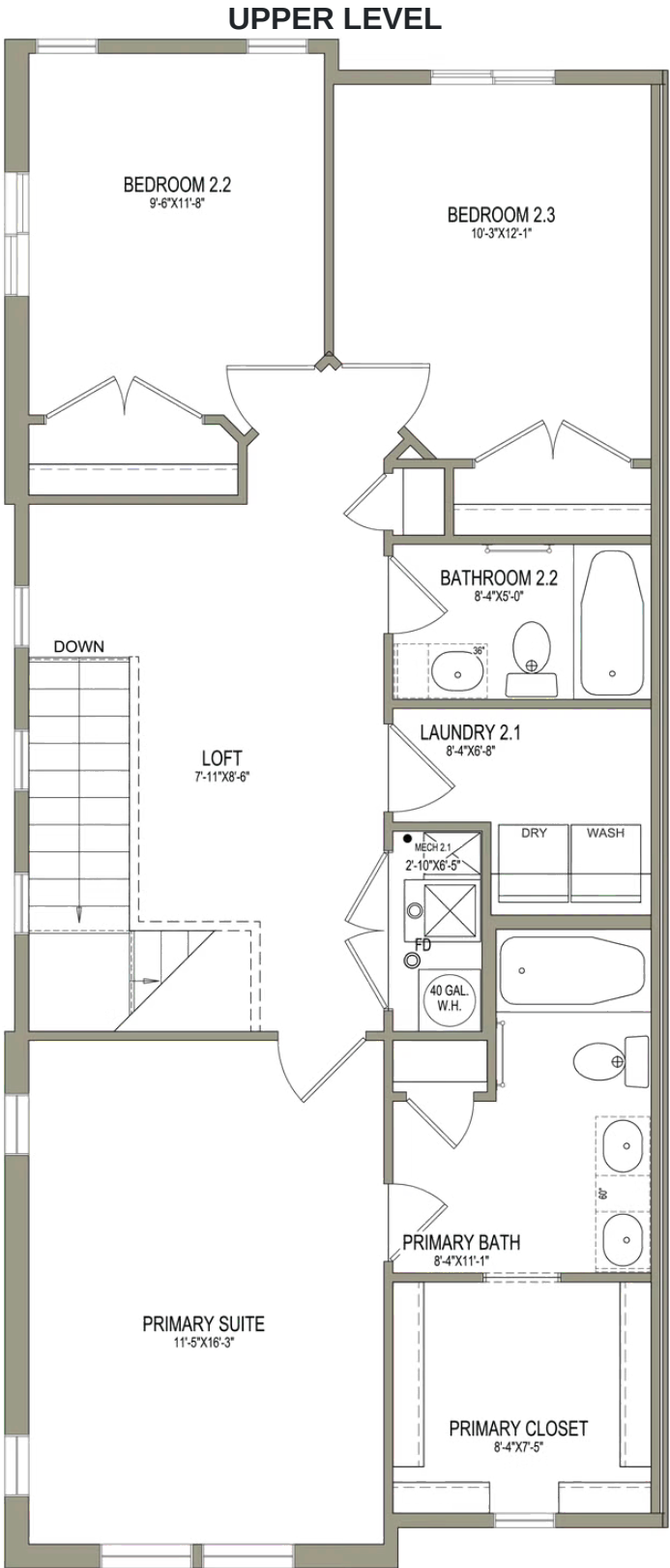


Rear View

MAIN LEVEL - SLAB ON GRADE



*Visionary Homes reserves the right to change prices without notice. Approximate square footage and options shown in plan may not be included in base price.



*Visionary Homes reserves the right to change prices without notice. Approximate square footage and options shown in plan may not be included in base price.