

[www.visionaryhomes.com](http://www.visionaryhomes.com)



## Benton

1 Elevations Available

 1,550 Total Sq.Ft.

 3 Bedrooms

 2.5 Bathrooms

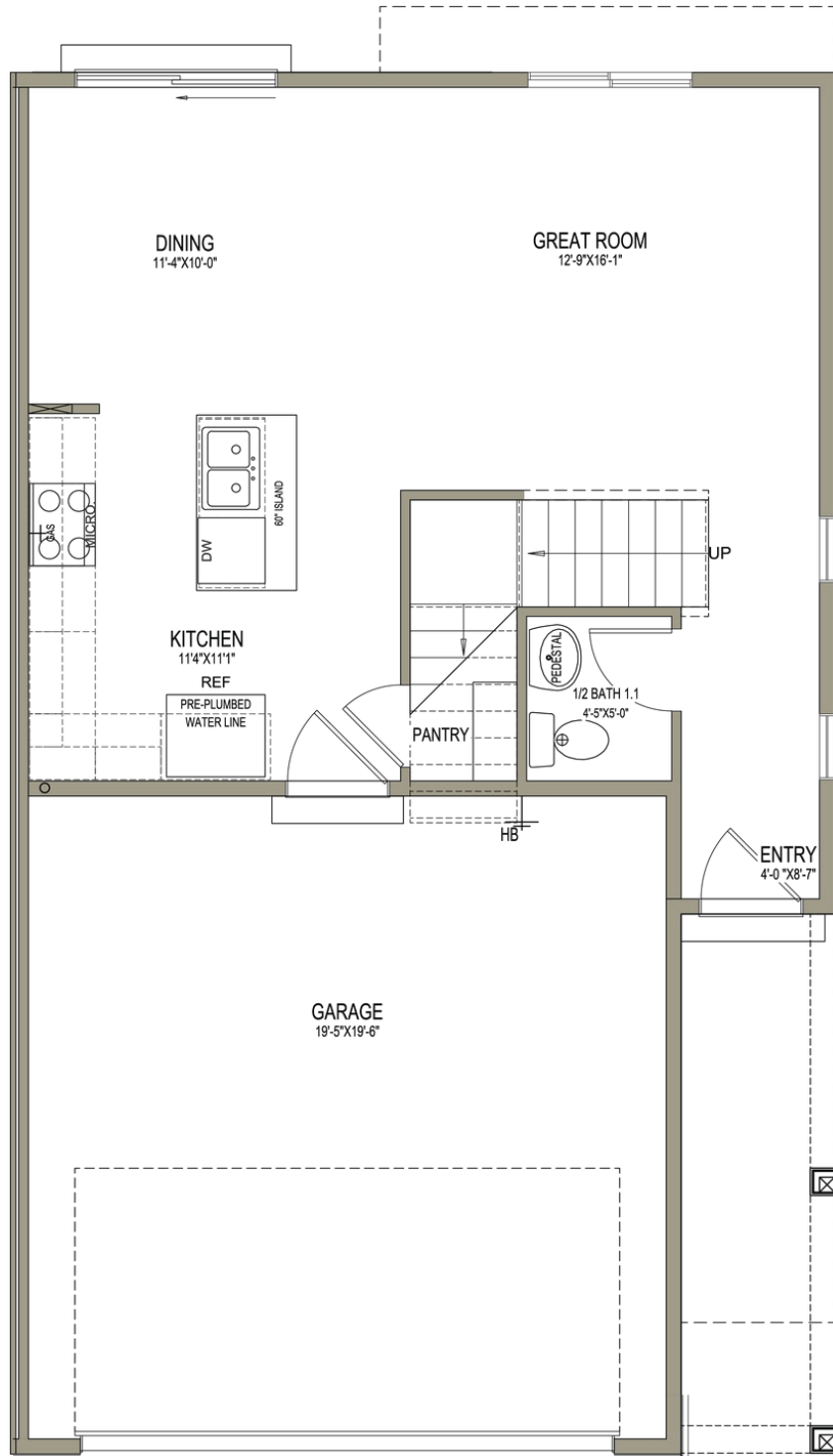
 2 Car Garage

The Benton townhome floor plan includes plenty of windows for natural lighting to your space. Featuring 3 beds and 2.5, this townhome welcomes you in through the entry to the open living area with the family room, dining, and kitchen. A walk-in pantry and kitchen island give you the space you need to prep and cook for you and your family. Upstairs you'll discover the owner's suite featuring an owner's bath with a spacious walk-in closet, a loft to turn into anything from a study to lounge space, bedrooms, and a convenient laundry room.



[www.visionaryhomes.com](http://www.visionaryhomes.com)

**MAIN LEVEL - SLAB ON GRADE**

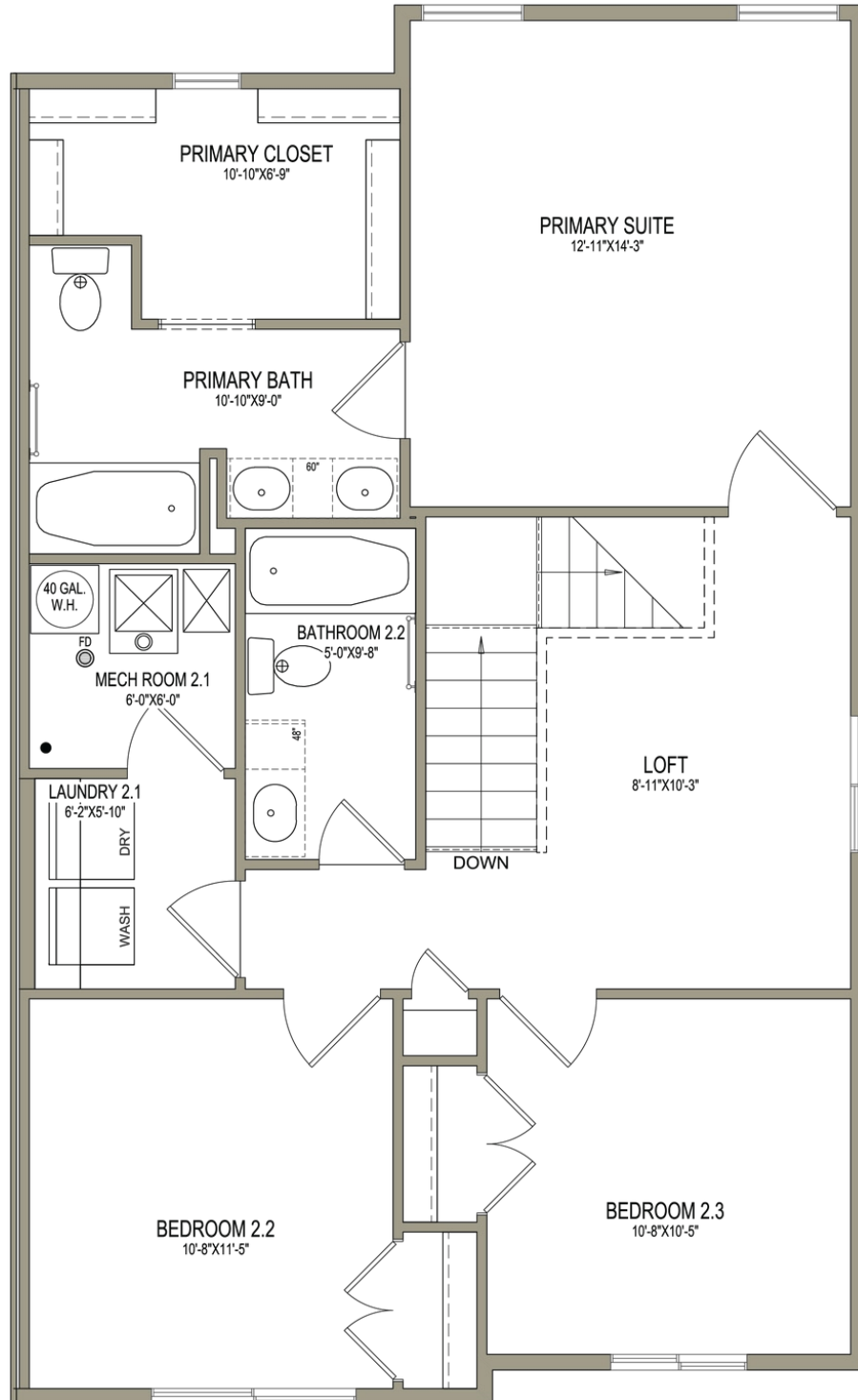


\*Visionary Homes reserves the right to change prices without notice.  
Approximate square footage and options shown in plan may not be included in base price.

**435.228.4702**  
[visionaryhomes.com](http://visionaryhomes.com)

[www.visionaryhomes.com](http://www.visionaryhomes.com)

## UPPER LEVEL



\*Visionary Homes reserves the right to change prices without notice.  
Approximate square footage and options shown in plan may not be included in base price.

435.228.4702  
[visionaryhomes.com](http://visionaryhomes.com)