

www.visionaryhomes.com


Sitka

5 Elevations Available

 1,549 Total Sq.Ft.

 3 Bedrooms

 2.5 Bathrooms

 2 Car Garage

Enter into the Sitka townhome to discover an open concept main living space you'll love. This 2-story floor plan features 3 beds and 2.5 baths, with all the bedrooms on the top floor. The dining, family room, and kitchen on the main level provide the perfect space for your family to relax, cook, eat, and socialize together. The kitchen includes a walk-in pantry and a wrap-around counter, where you can add a few stools for snack time to working on homework. Upstairs you'll discover a loft off the stairs, an owner's suite featuring an owner's bath and spacious walk-in closet with a window, bedrooms, a bath, and the laundry room.



Front Elevation

Side Elevation

Rear Elevation

*Visionary Homes reserves the right to change prices without notice. Approximate square footage and options shown in plan may not be included in base price.

435.228.4702
visionaryhomes.com

www.visionaryhomes.com

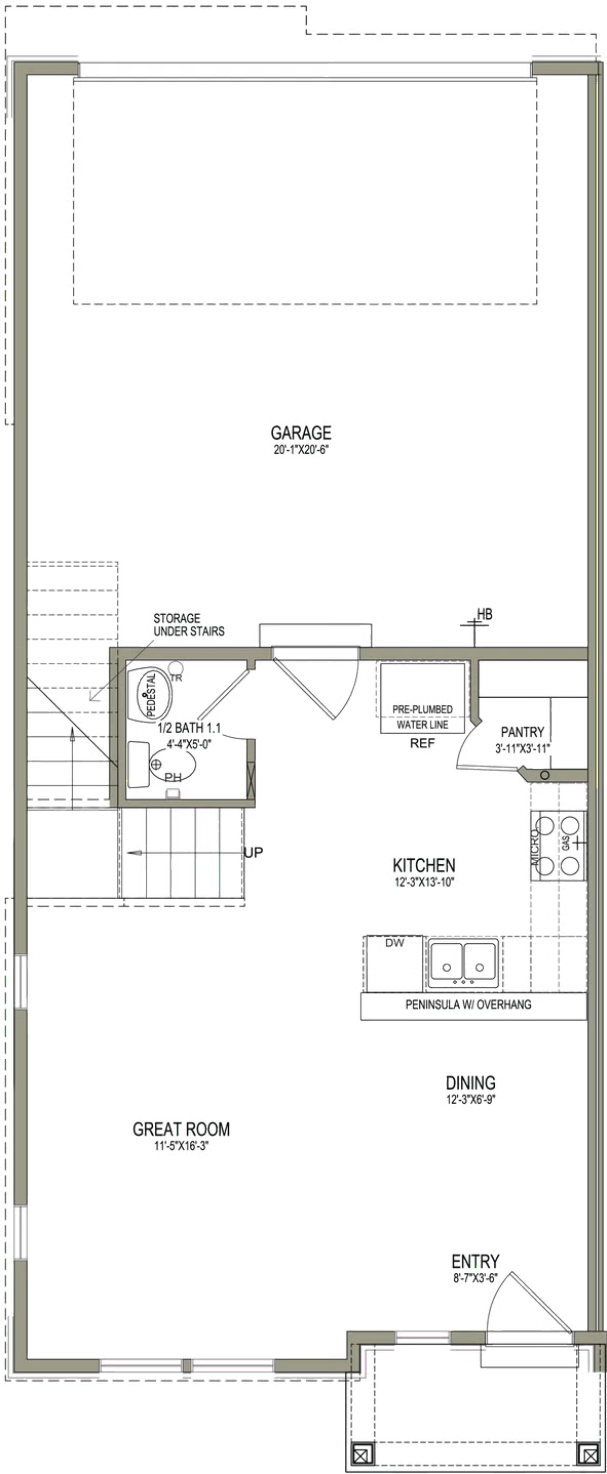


Front



www.visionaryhomes.com

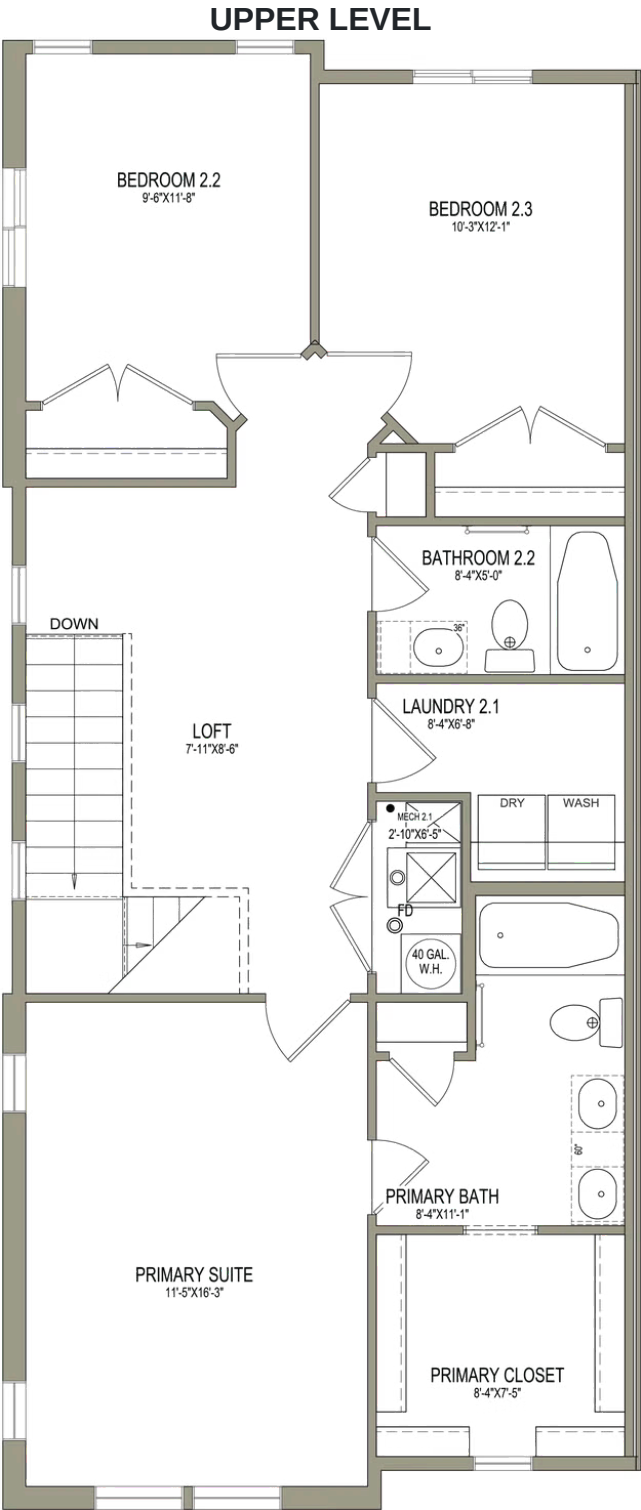
MAIN LEVEL - SLAB ON GRADE



*Visionary Homes reserves the right to change prices without notice. Approximate square footage and options shown in plan may not be included in base price.



www.visionaryhomes.com



*Visionary Homes reserves the right to change prices without notice. Approximate square footage and options shown in plan may not be included in base price.