

www.visionaryhomes.com



Sale Price
\$539,990

 2,439 Sq.Ft.

 2,439 Sq.Ft.

 4 Bedrooms

 2 Car Garage

Introducing the Everglade, an elegant yet functional home plan featuring four bedrooms and two and a half bathrooms. The open concept kitchen and dining room flow seamlessly into the expansive great room with abundant natural light. Sliding glass doors lead to the patio, perfect for hosting gatherings and making memories with loved ones. The primary suite boasts a luxurious ensuite bathroom and spacious walk-in closet. Live every day in the perfect blend of style and functionality with the Everglade floor plan.

HOME FEATURES:

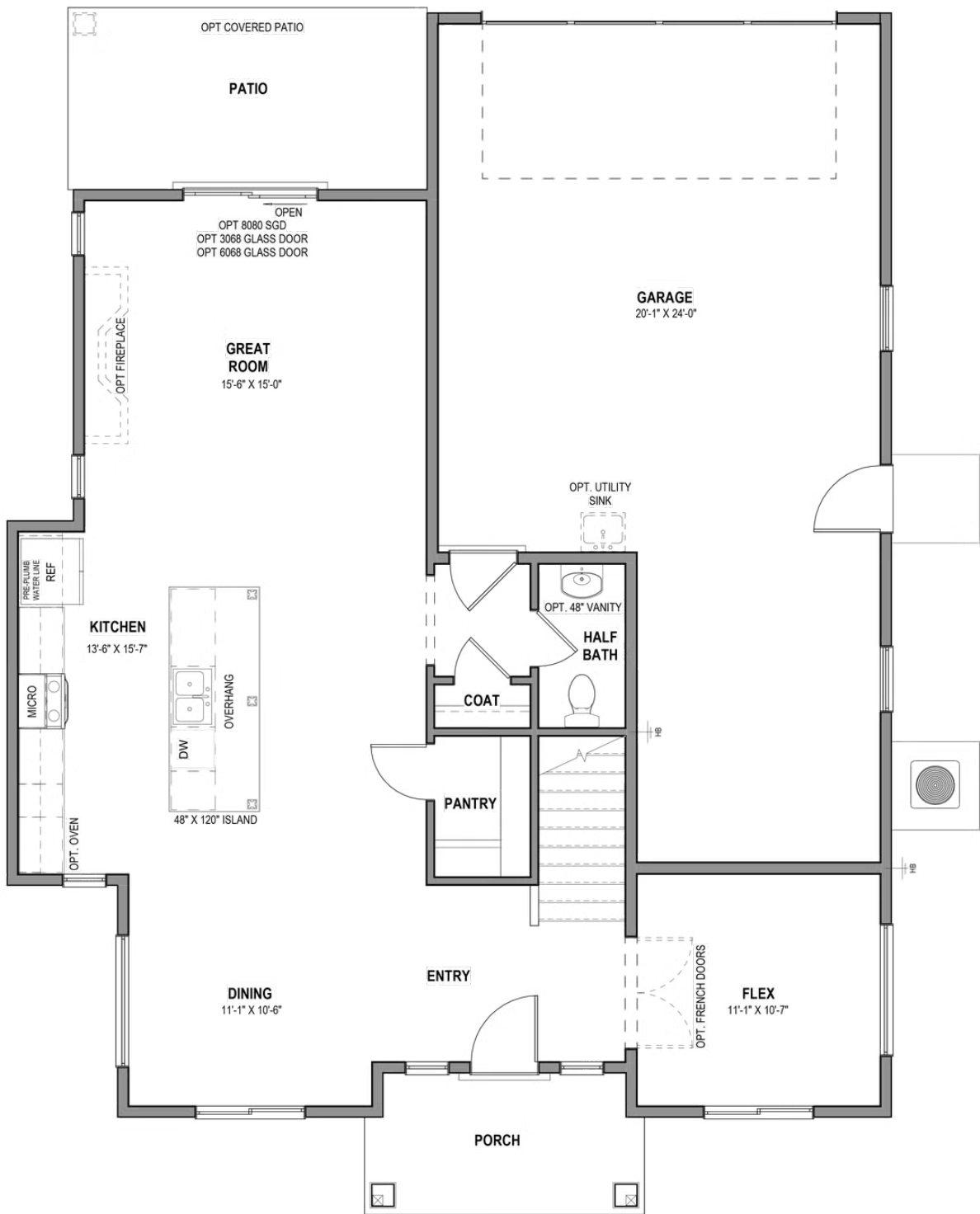
- .12 acre lot
- Contemporary elevation featuring stucco, stone, and hardboard
- 4 bedrooms, 2.5 bathrooms, 2 Car Garage
- Slab on Grade Home
- 9' ceiling height on main floor with lots of natural light
- Plush carpet in bedrooms and upstairs with LVP in common areas
- Electric fireplace in the living room - creates a cozy atmosphere

Check out the gallery for photos of this home! Schedule a private tour of this home or call for more information.



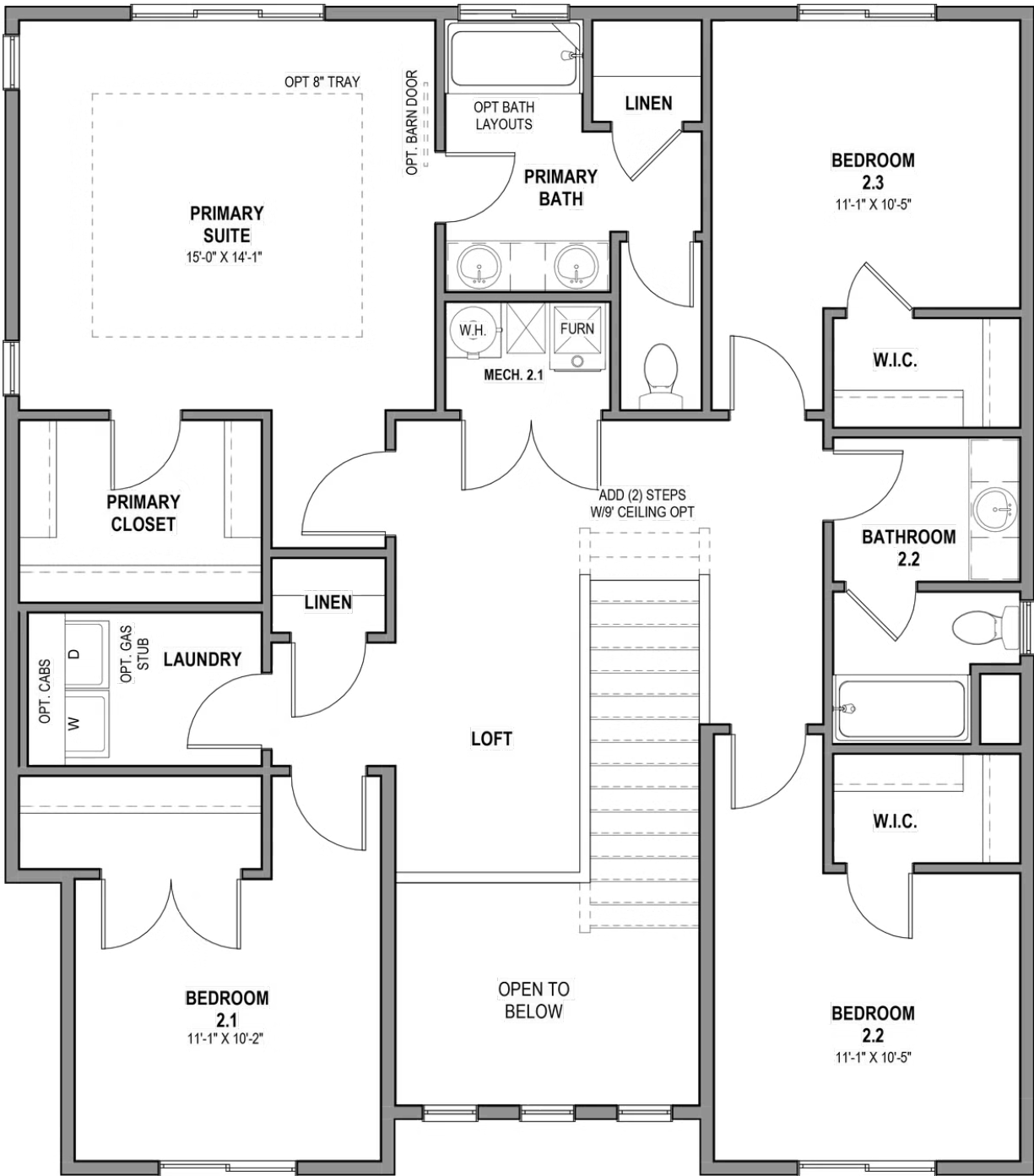


MAIN FLOOR - SLAB ON GRADE



*Visionary Homes reserves the right to change prices without notice. Approximate square footage and options shown in plan may not be included in base price.

SECOND LEVEL



*Visionary Homes reserves the right to change prices without notice. Approximate square footage and options shown in plan may not be included in base price.