


www.visionaryhomes.com



Sale Price

\$529,900

 2,439 Sq.Ft.

 2,439 Sq.Ft.

 4 Bedrooms

 2 Car Garage

Introducing the Everglade, an elegant yet functional home plan featuring four bedrooms upstairs and two full bathrooms. Nestled in a serene setting, this home offers unparalleled comfort and convenience. The primary suite boasts a luxurious ensuite bathroom and walk-in closet, providing a private sanctuary for relaxation.

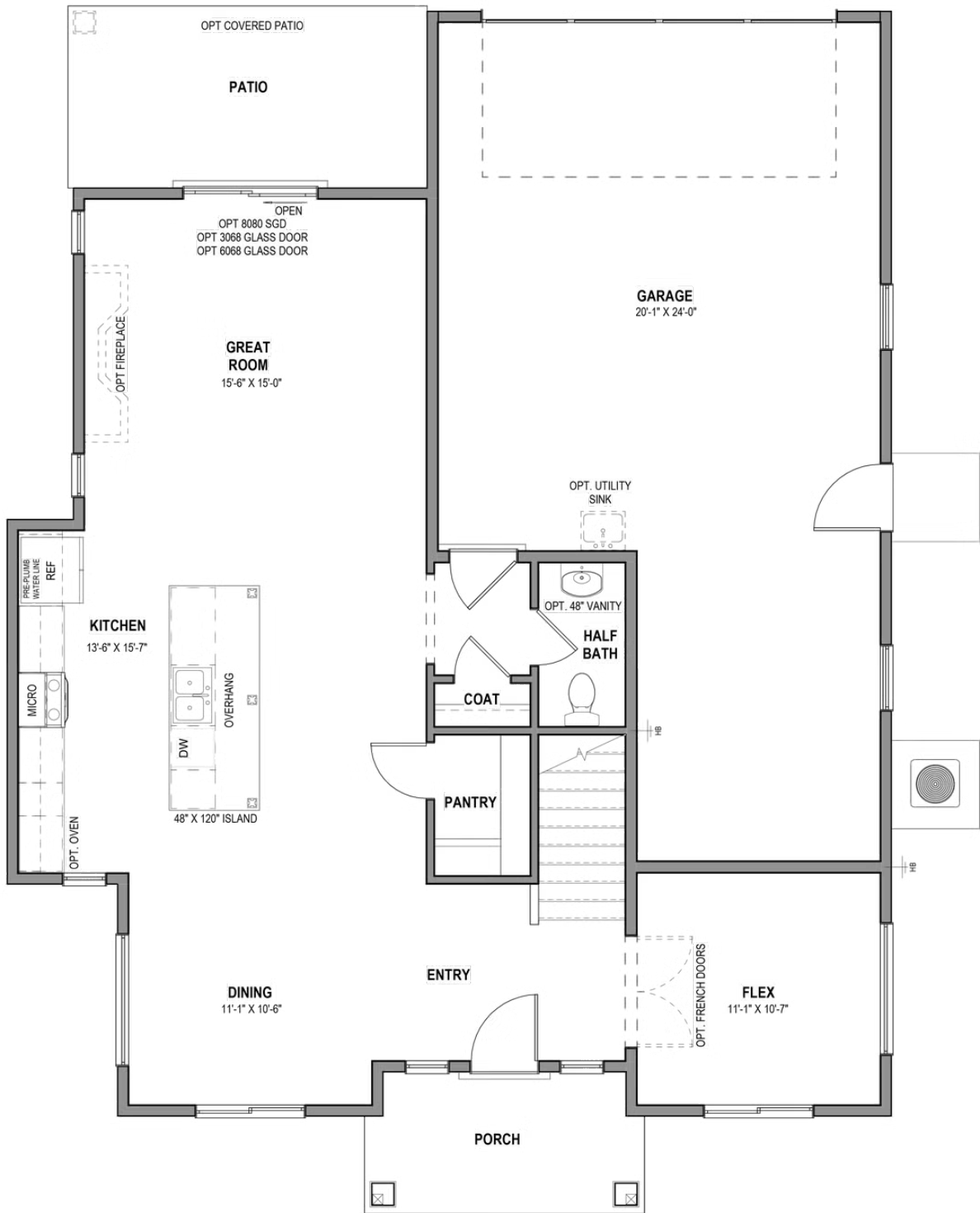
HOME FEATURES:

- .14 acre lot
- Everglade Floor Plan with a Transitional Elevation
- 4 bedrooms, 2.5 baths, 2 Car Garage
- Slab on Grade Home
- Carpet with 8 lb padding in all bedrooms
- LVP in all Common Areas
- 9' Ceiling Height on Main Floor
- Electric Fireplace in Living Room

Call today to request more information or to schedule a tour!

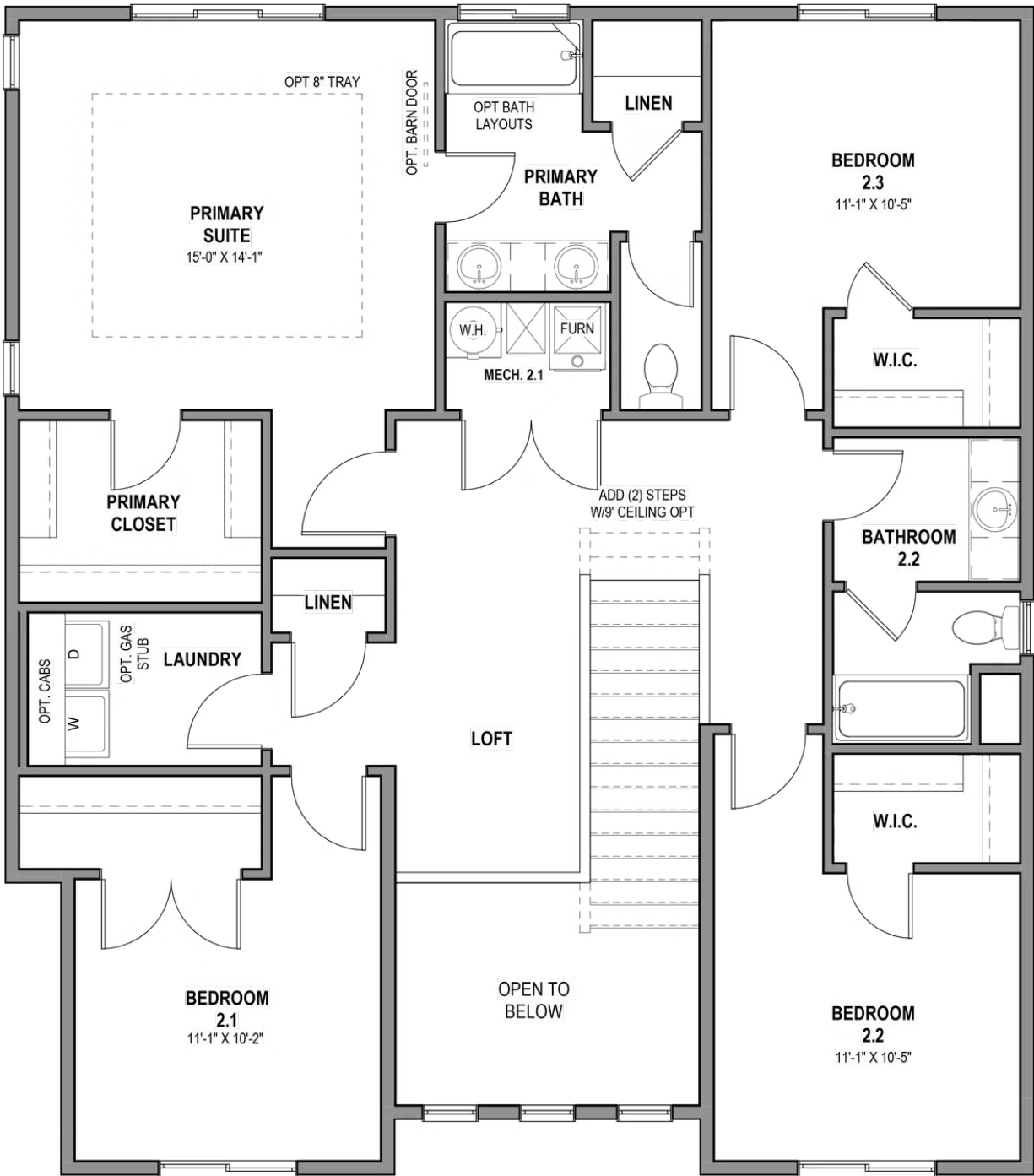


MAIN FLOOR - SLAB ON GRADE



*Visionary Homes reserves the right to change prices without notice. Approximate square footage and options shown in plan may not be included in base price.

SECOND LEVEL



*Visionary Homes reserves the right to change prices without notice. Approximate square footage and options shown in plan may not be included in base price.