

[www.visionaryhomes.com](http://www.visionaryhomes.com)



**Sale Price**

**\$524,990**

 2,216 Sq.Ft.

 2,214 Sq.Ft.

 3 Bedrooms

 3 Car Garage

Welcome to the Springhill quick-move-in home in our Ridgeline Park community! This 2-story floor plan features 3 beds and 2.5 baths with an open-concept layout on the main level. Upstairs you'll find a loft space, the primary suite with ensuite bathroom and closet, and an additional 2 bedrooms and shared bathroom.

#### EXTERIOR FEATURES

- .13 acre lot
- 3 car garage
- Craftsman elevation with siding, stucco and stone accents
- Covered front patio

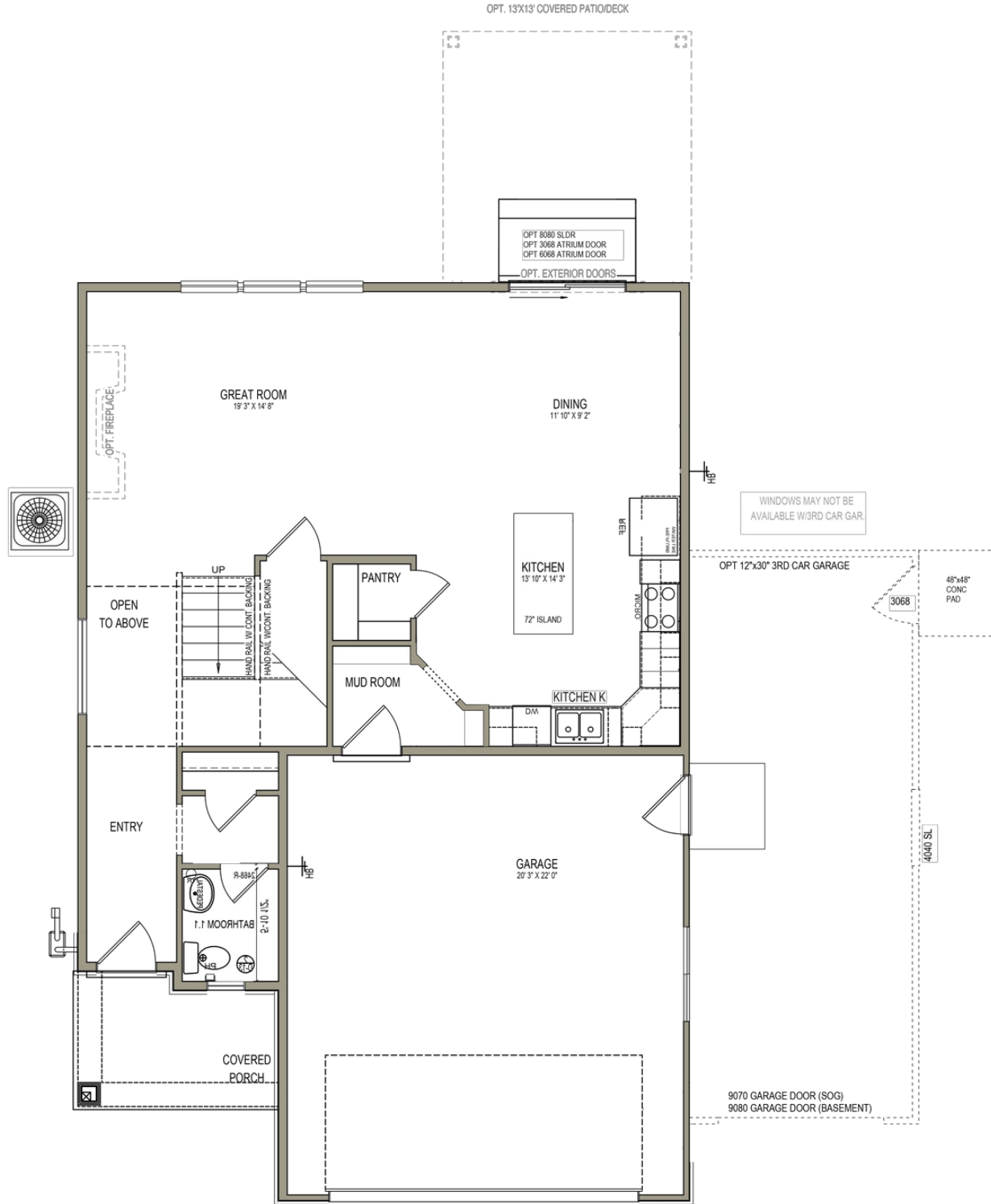
#### INTERIOR FEATURES

- 3 beds, 2.5 bathrooms, and loft space
- Elevated kitchen with 2 toned kitchen cabinetry, range hood, floating shelves, quartz countertops and gold hardware
- Stainless silver hardware throughout home
- Laminate flooring in common areas
- 9' ceilings on main floor

\*Visionary Homes reserves the right to change prices without notice.  
Approximate square footage and options shown in plan may not be included in base price.

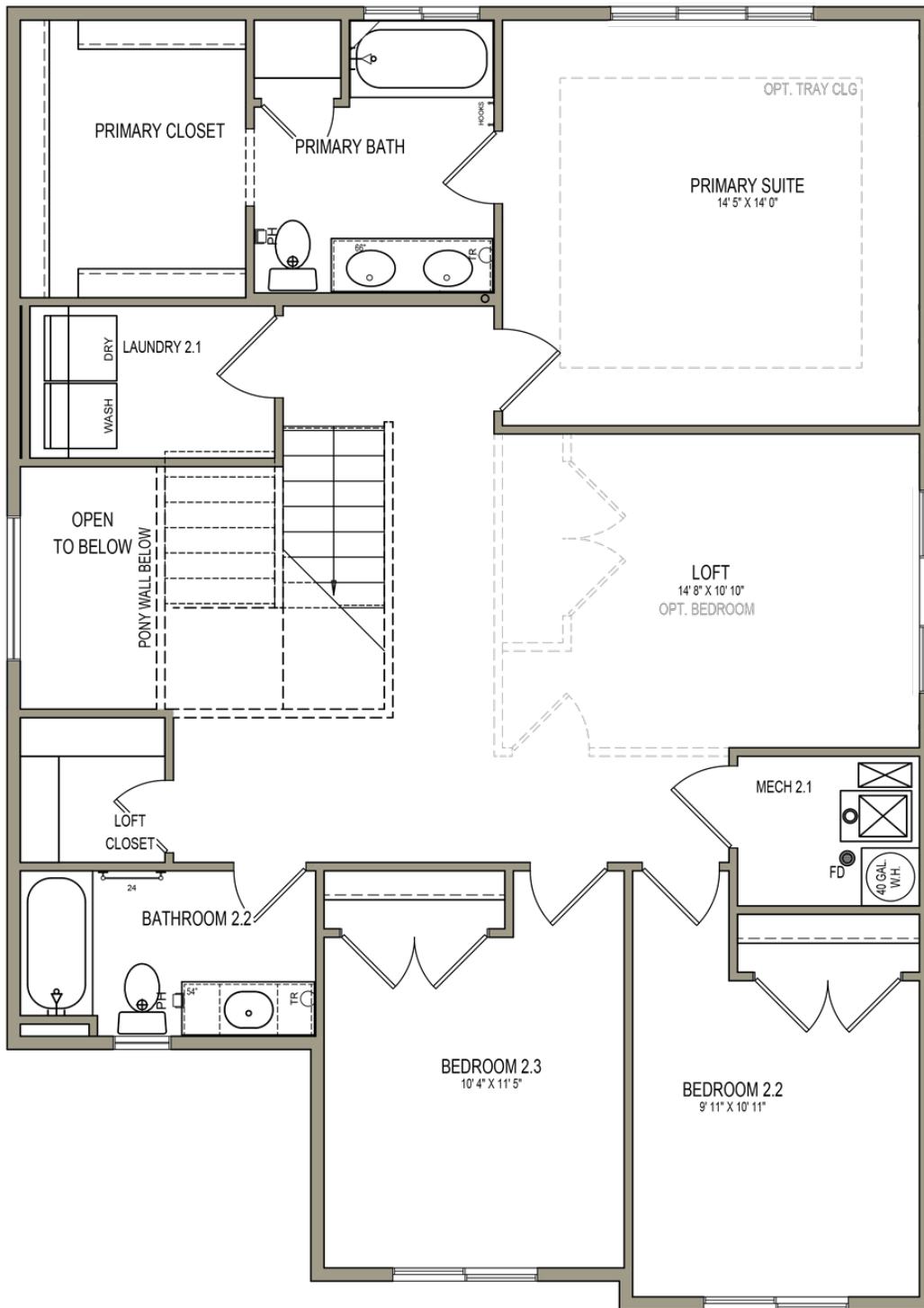
**435.228.4702**  
[visionaryhomes.com](http://visionaryhomes.com)

MAIN LEVEL - SLAB ON GRADE



\*Visionary Homes reserves the right to change prices without notice.  
Approximate square footage and options shown in plan may not be included in base price.

UPPER LEVEL



WINDOWS MAY NOT BE AVAILABLE W/3RD CAR GAR.