

[www.visionaryhomes.com](http://www.visionaryhomes.com)



## Everglade

4 Elevations Available

 2,439 Total Sq.Ft.

 No Basement

 4 Bedrooms

 2.5 Bathrooms

 2 Car Garage

Introducing the Everglade, an elegant yet functional home plan featuring four bedrooms and two and a half bathrooms. The open concept kitchen and dining room flow seamlessly into the expansive great room with abundant natural light. Sliding glass doors lead to the patio, perfect for hosting gatherings and making memories with loved ones. The primary suite boasts a luxurious ensuite bathroom and spacious walk-in closet. Live every day in the perfect blend of style and functionality with the Everglade floor plan.



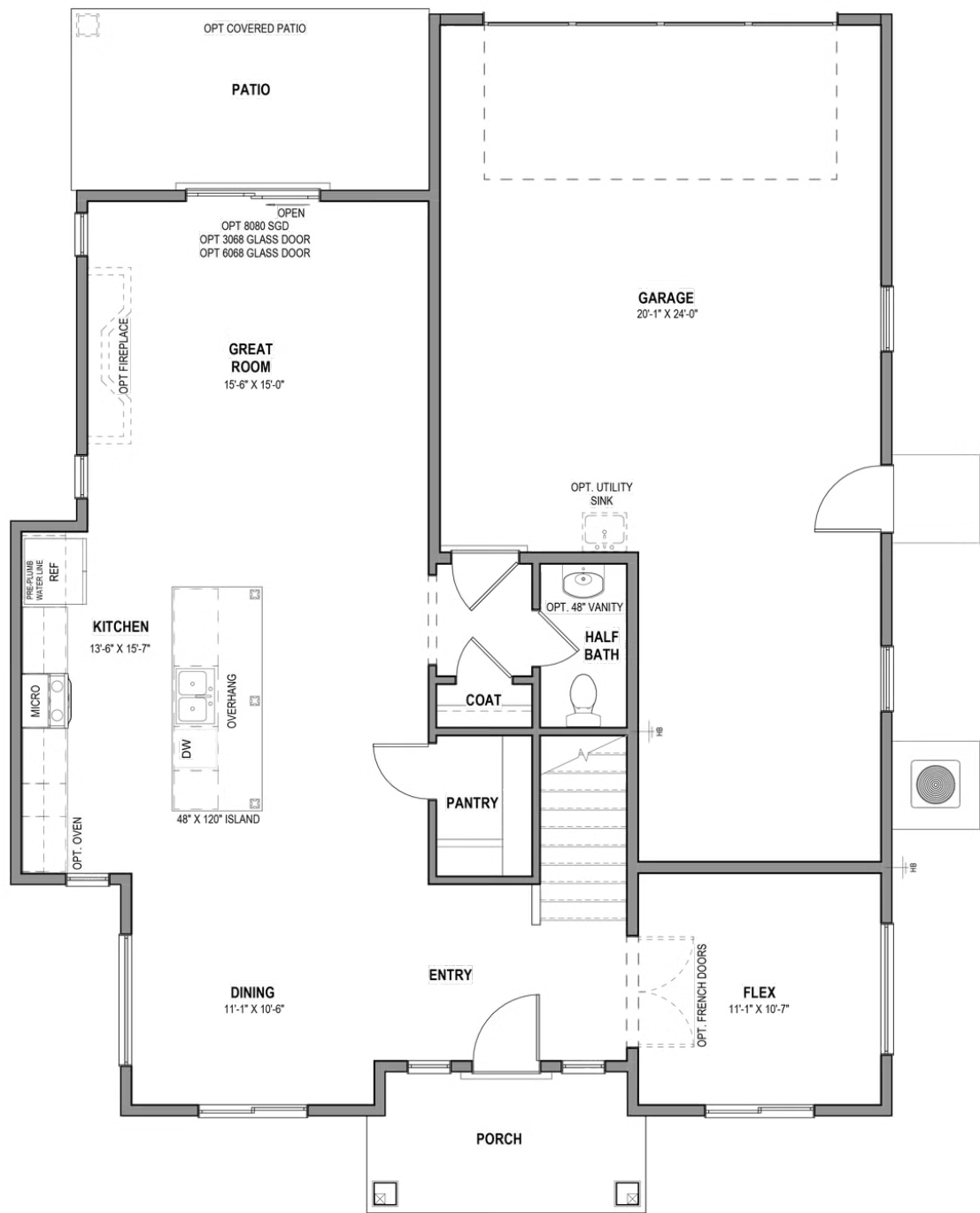
[www.visionaryhomes.com](http://www.visionaryhomes.com)



Transitional - Back



MAIN FLOOR - SLAB ON GRADE



\*Visionary Homes reserves the right to change prices without notice. Approximate square footage and options shown in plan may not be included in base price.



## SECOND LEVEL

