

www.visionaryhomes.com



Glendale

3 Elevations Available

 2,290 Total Sq.Ft.

 3 - 4 Bedrooms

 2.5 Bathrooms

 2 - 3 Car Garage

With a stylish exterior and functional design, our Glendale floor plan is a charmer. Off the main entry you'll discover a flex room and stairs leading to all the bedrooms upstairs. The main floor includes a large great room, dining, kitchen, and mudroom with a half bath. Upstairs hosts a spacious loft area, laundry room, two bedrooms and the owner's suite with an owner's bathroom and large walk-in closet. With a total of 3 bedrooms and 2.5 baths.



Craftsman



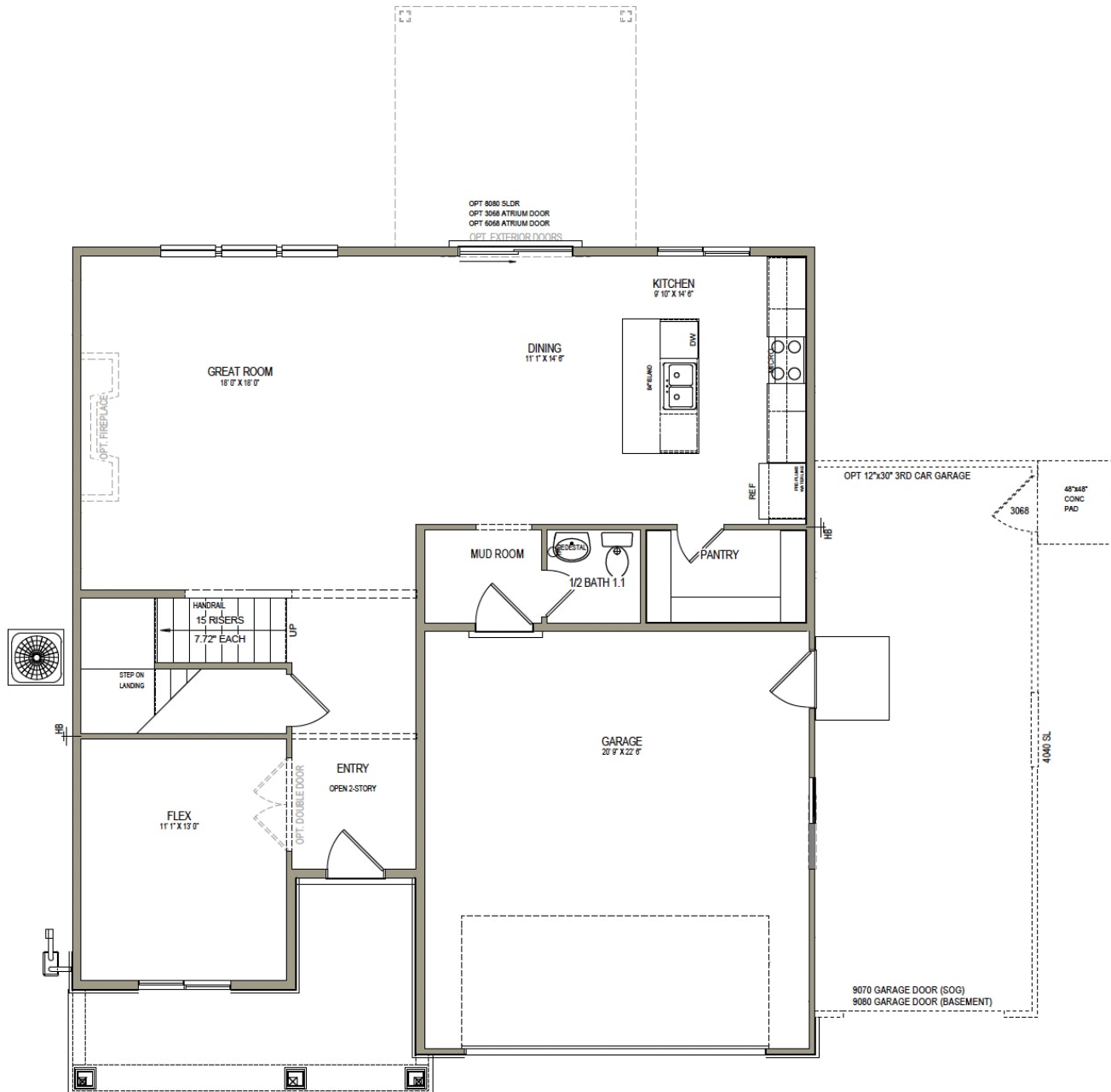
Farmhouse



Traditional w/Stucco

www.visionaryhomes.com

MAIN LEVEL - SLAB ON GRADE



*Visionary Homes reserves the right to change prices without notice.
Approximate square footage and options shown in plan may not be included in
base price.

435.228.4702
visionaryhomes.com

UPPER LEVEL

