

www.visionaryhomes.com


Maple

3 Elevations Available

 2,215 Total Sq.Ft.

 2,215 Finished Sq.Ft.

 No Basement

 3 - 4 Bedrooms

 2.5 Bathrooms

 2 - 3 Car Garage

The Maple two-story floor plan offers a contemporary exterior and a spacious interior with 3 bedrooms, 2.5 bathrooms, and 2,254 total square feet. This is one of our most open floor plans, featuring an open concept main living space, a sizeable mudroom, pantry, and 1/2 bathroom. The upstairs features three bedrooms and a large loft that can become a movie room, game room, art room, or a fourth bedroom. And relax in a spacious primary bedroom with a gorgeous primary bath and deep walk-in closet with a window for natural light.



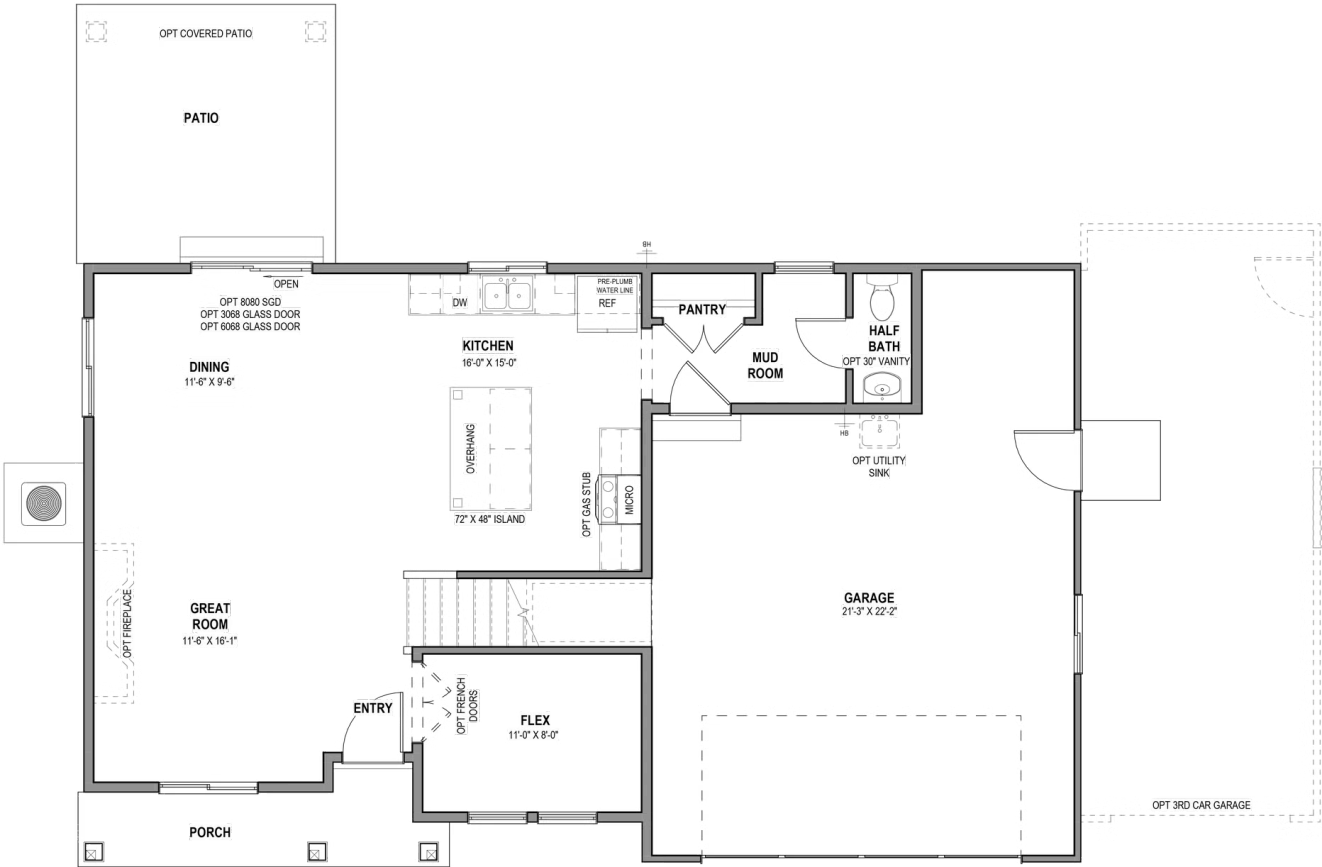
*Visionary Homes reserves the right to change prices without notice. Approximate square footage and options shown in plan may not be included in base price.

435.228.4702
visionaryhomes.com



www.visionaryhomes.com

MAIN LEVEL - SLAB ON GRADE

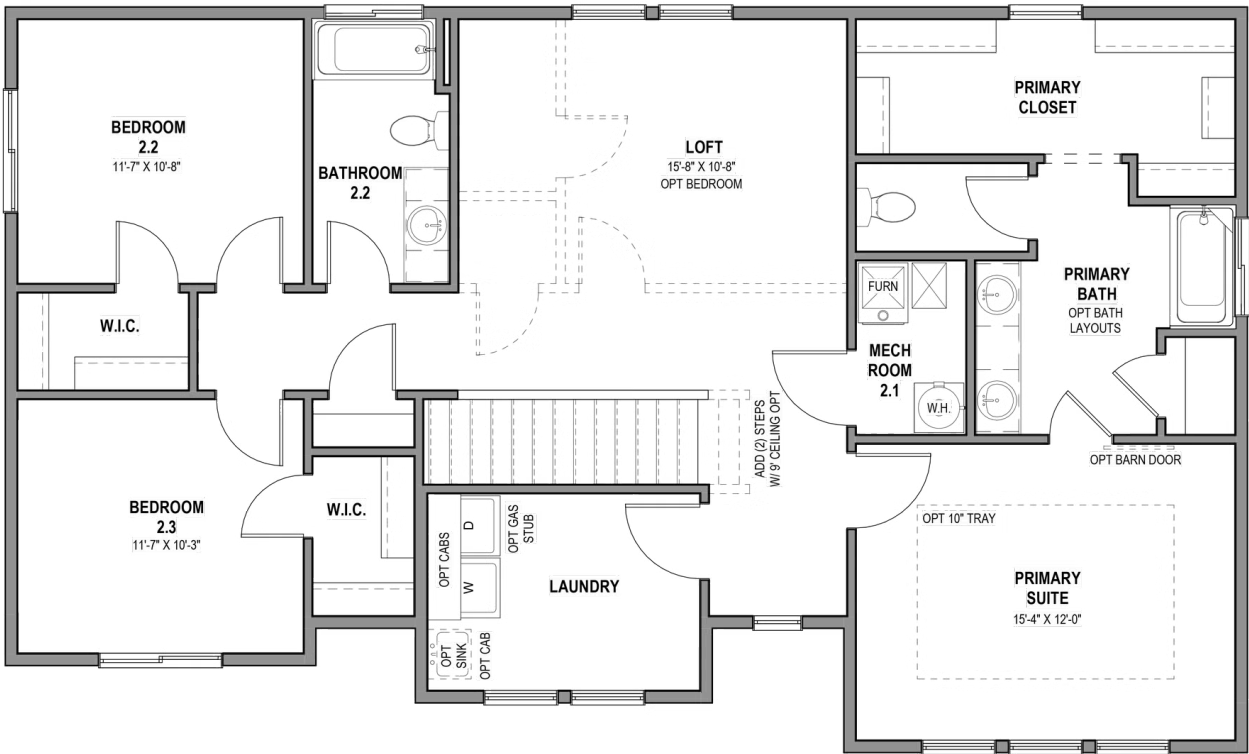


*Visionary Homes reserves the right to change prices without notice. Approximate square footage and options shown in plan may not be included in base price.



www.visionaryhomes.com

UPPER LEVEL



*Visionary Homes reserves the right to change prices without notice. Approximate square footage and options shown in plan may not be included in base price.