





www.visionaryhomes.com



Conway

5 Elevations Available

-  2,212 Total Sq.Ft.
-  4 Bedrooms
-  3.5 Bathrooms
-  2 Car Garage

The 3-story Conway townhome floor plan offers 4 beds and 3.5 baths. With both a living room on the main floor and an open loft-style family room on the second floor, you'll love spending time with friends and family in the comfort of your new home. The kitchen features a walk-in pantry and island, with most of the bedrooms on the top floor. Relax after a long day in your owner's suite with an ensuite bath and a walk-in closet showcasing a window.



Front Elevation: Selections and Landscaping as example,



Side Elevation: Selections and Landscaping as example,



Back Elevation: Selections and Landscaping as example,

*Visionary Homes reserves the right to change prices without notice. Approximate square footage and options shown in plan may not be included in base price.

www.visionaryhomes.com



Side Elevation: Selections and
Landscaping as example,
Subject to change

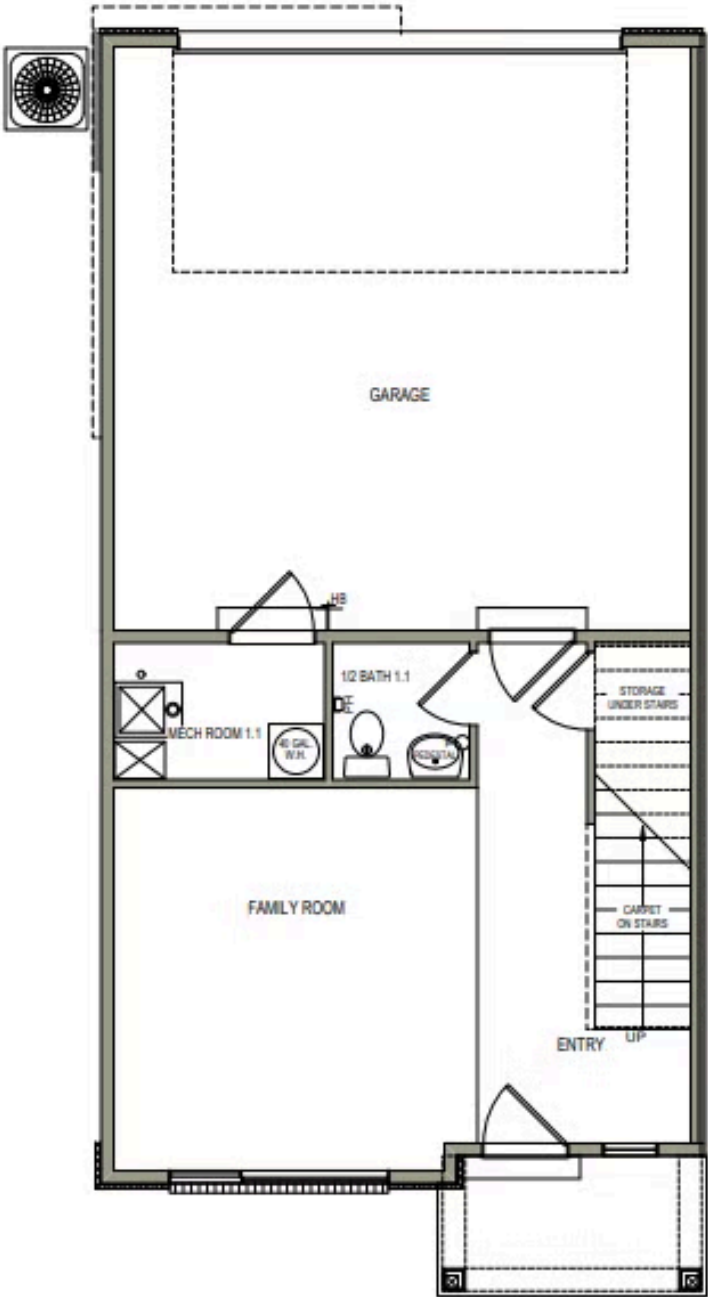


Front Elevation: Selections and
Landscaping as example,
Subject to change



www.visionaryhomes.com

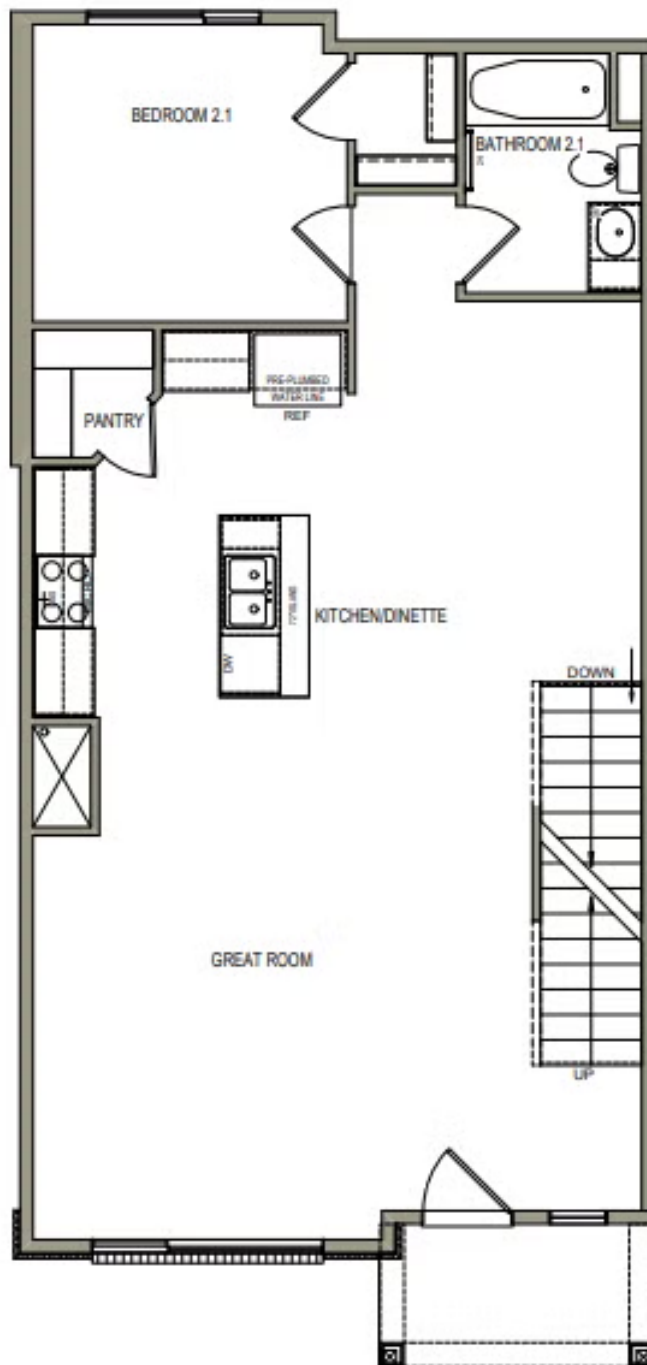
MAIN LEVEL - 429 SQ.FT.



*Visionary Homes reserves the right to change prices without notice. Approximate square footage and options shown in plan may not be included in base price.

www.visionaryhomes.com

SECOND LEVEL - 912 SQ.FT.



www.visionaryhomes.com

THIRD LEVEL - 871 SQ.FT.

