

[www.visionaryhomes.com](http://www.visionaryhomes.com)



## Harrison

2 Elevations Available

 1,565 Total Sq.Ft.

 3 Bedrooms

 2.5 Bathrooms

 2 Car Garage

With 3 beds and 2.5 baths, The Harrison townhome is a two-story floor plan. Offering an open concept main living space, with the family room, kitchen, and dining, so you and your family can enjoy mornings to evenings together. You'll love having a large kitchen pantry and kitchen island to cook with ease. Upstairs you'll find a loft to use as a study, play area, or lounge space. The owner's suite features a spacious walk-in closet and owner's bath.



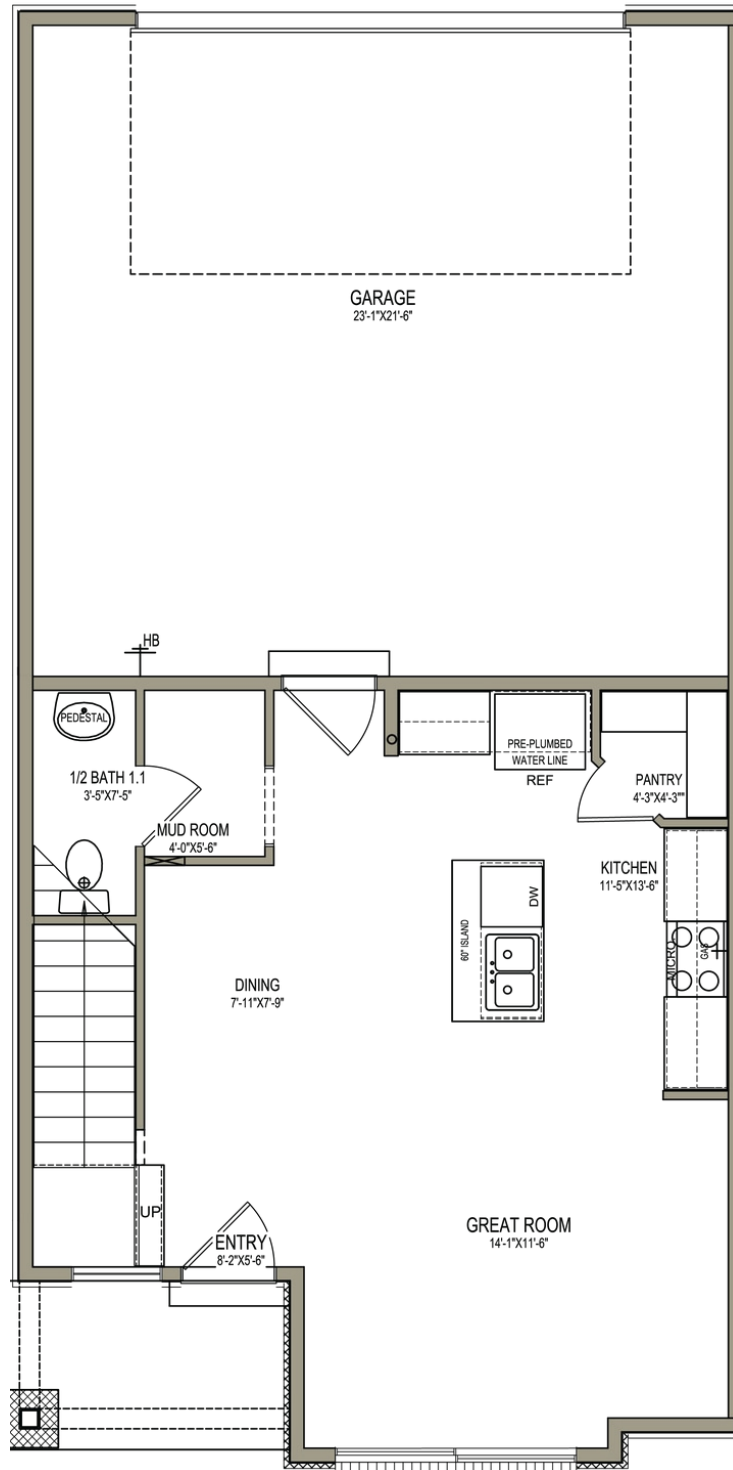
Front Elevation



Front

[www.visionaryhomes.com](http://www.visionaryhomes.com)

## MAIN LEVEL

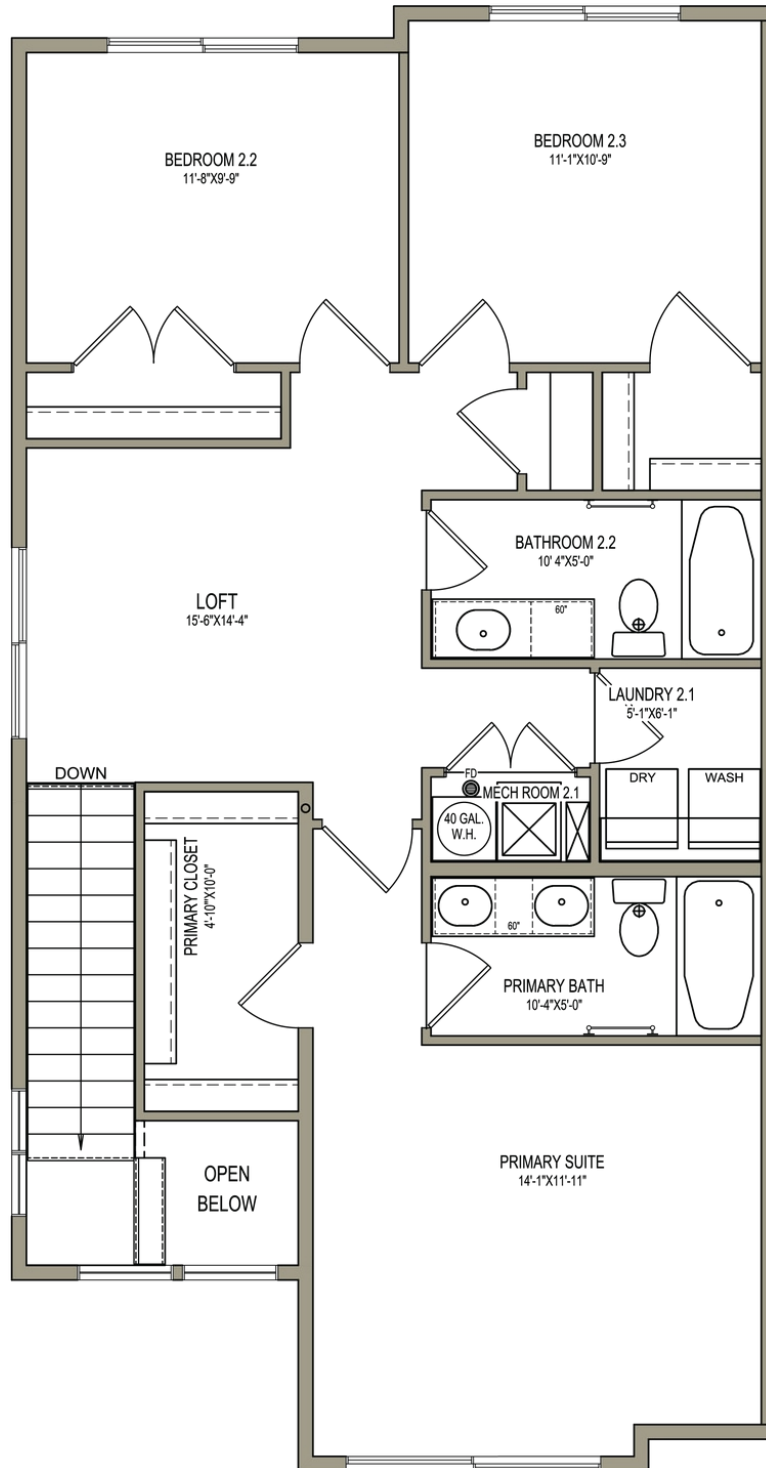


\*Visionary Homes reserves the right to change prices without notice.  
Approximate square footage and options shown in plan may not be included in base price.

**435.228.4702**  
[visionaryhomes.com](http://www.visionaryhomes.com)

[www.visionaryhomes.com](http://www.visionaryhomes.com)

## UPPER LEVEL



\*Visionary Homes reserves the right to change prices without notice.  
Approximate square footage and options shown in plan may not be included in base price.

**435.228.4702**  
[visionaryhomes.com](http://visionaryhomes.com)