

[www.visionaryhomes.com](http://www.visionaryhomes.com)



## Kingman

2 Elevations Available

 1,615 Total Sq.Ft.

 3 Bedrooms

 2.5 Bathrooms

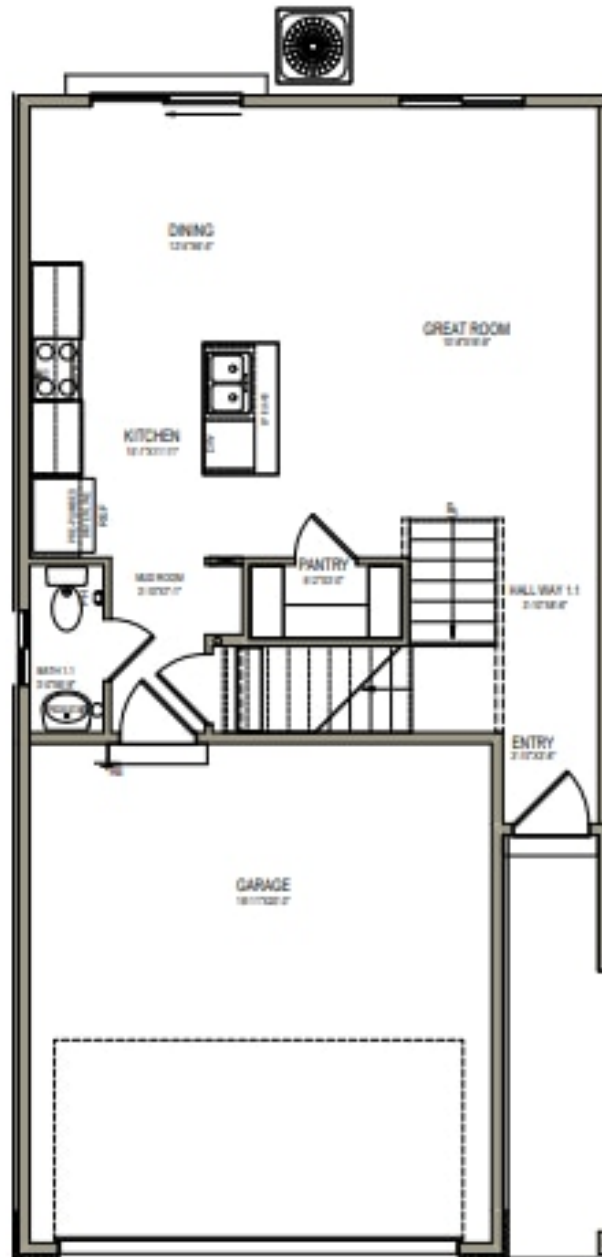
 2 Car Garage

With 3 bed and 2.5 bath, The Kingman townhome is a two-story floor plan. Offering an open concept main living space, you can enjoy mornings to evenings together. You'll love having a large kitchen pantry and kitchen island to cook with space. The owner's suite features a spacious walk-in closet and owner's bath.



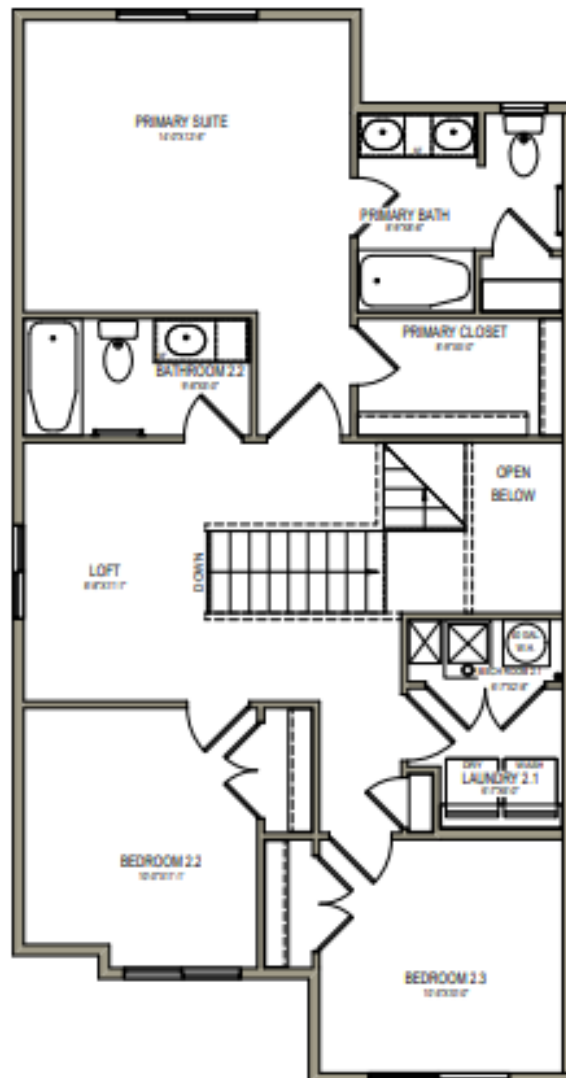
[www.visionaryhomes.com](http://www.visionaryhomes.com)

## MAIN LEVEL



[www.visionaryhomes.com](http://www.visionaryhomes.com)

## UPPER LEVEL



\*Visionary Homes reserves the right to change prices without notice.  
Approximate square footage and options shown in plan may not be included in base price.

**435.228.4702**  
[visionaryhomes.com](http://visionaryhomes.com)