

www.visionaryhomes.com



Sale Price

\$539,990

 2,661 Sq.Ft.

 1,873 Sq.Ft.

 3 Bedrooms

 3 Car Garage

Welcome to The Madison - a quick-move-in home in our Vineyard community. This home features 3 beds, 2.5 baths, a 3 car garage and an unfinished basement. The main floor features an open-concept main living area and kitchen with walk in pantry and island. Conveniently located off the garage is a mudroom and powder room. Upstairs is a loft area near an open to below view of the front door. Feel ultimate relaxation in the primary bedroom with a walk-in closet and ensuite bath. With two bedrooms, one with a walk-in closet, also upstairs.

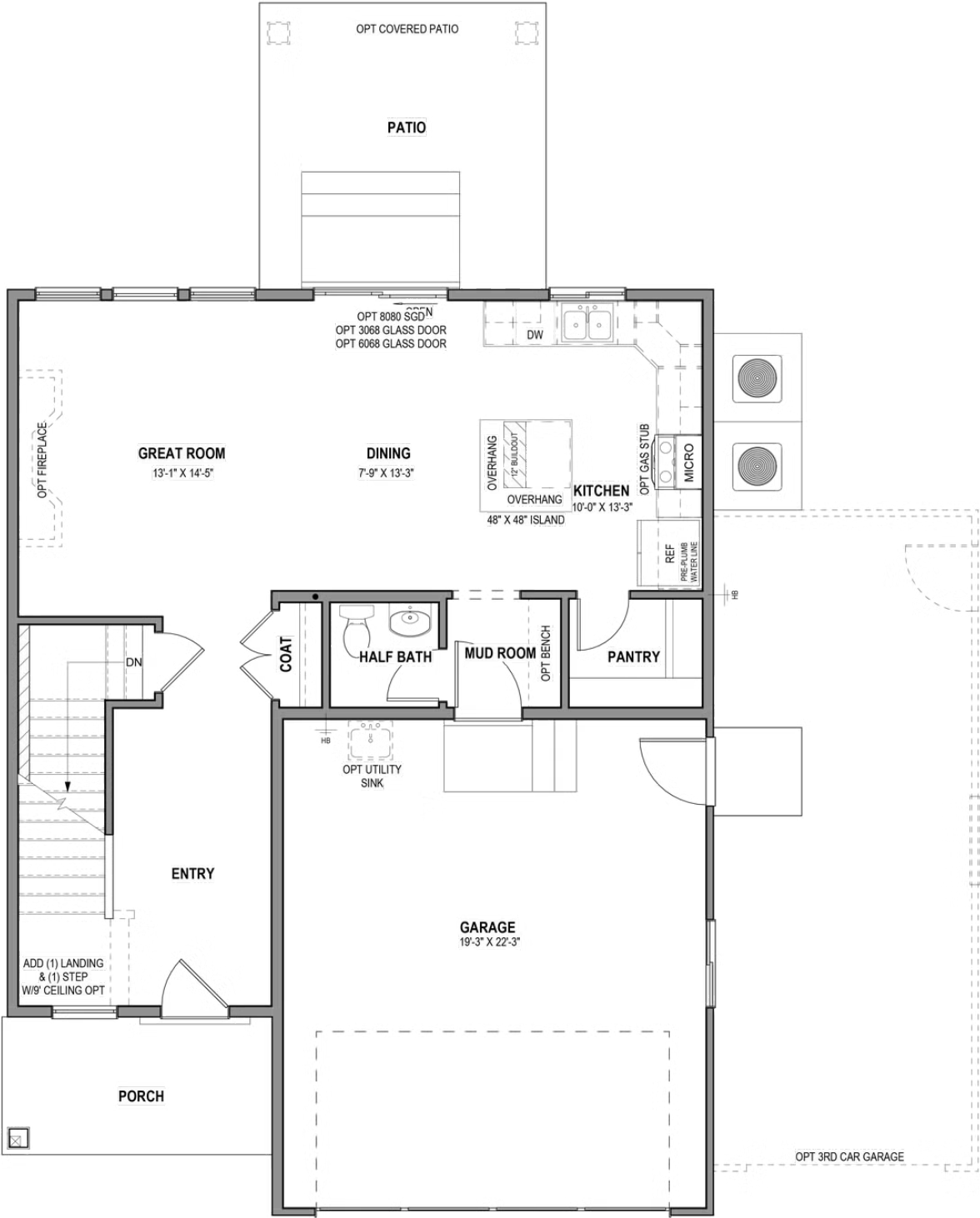
HOME FEATURES:

- .13 acre lot
- Farmhouse elevation with painted hardboard board and batten
- 3 bedrooms, 2.5 bathrooms, 3 car garage
- Covered front porch
- Gorgeous kitchen with 2-toned cabinetry, unique quartzite countertops and backsplash
- Quartz countertops and soft close cabinets in bathrooms
- LVP flooring in common areas
- Tile flooring in all bathrooms
- 9' ceilings
- Electric fireplace in living room

Call today for more information or to schedule an appointment with one of our New Home Specialists!

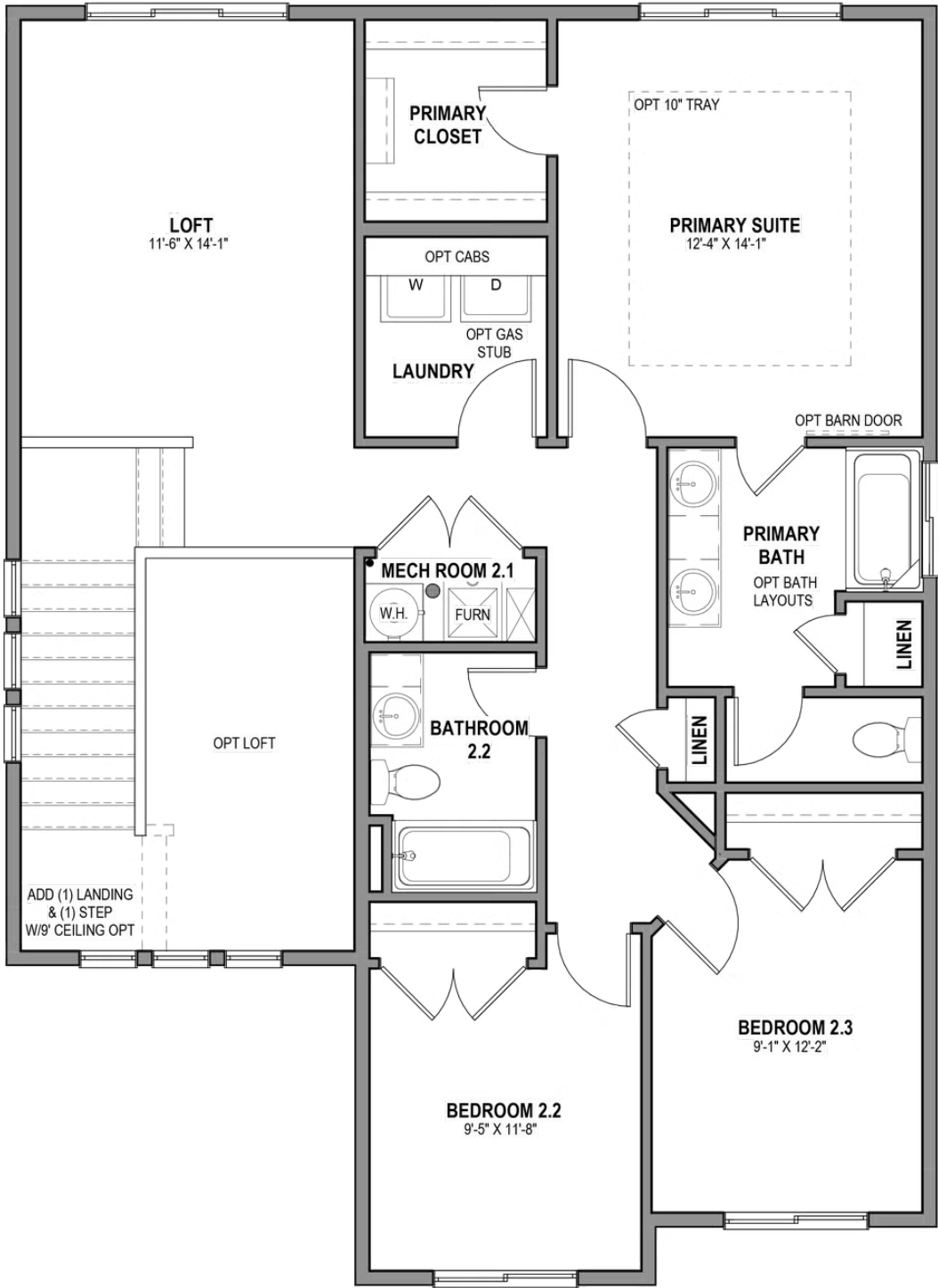


MAIN LEVEL W/ UNFINISHED BASEMENT



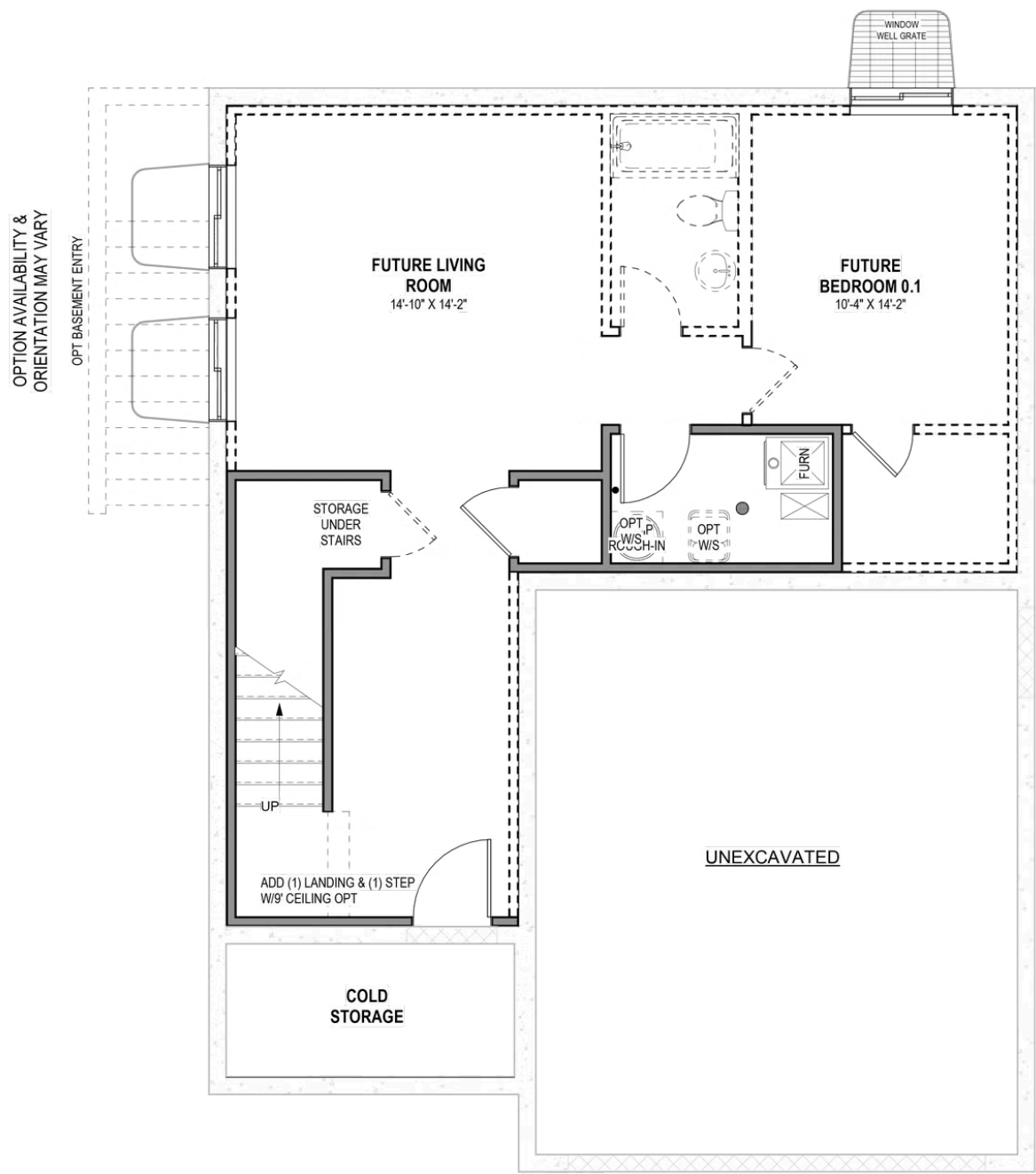
*Visionary Homes reserves the right to change prices without notice. Approximate square footage and options shown in plan may not be included in base price.

UPPER LEVEL



*Visionary Homes reserves the right to change prices without notice. Approximate square footage and options shown in plan may not be included in base price.

UNFINISHED BASEMENT



*Visionary Homes reserves the right to change prices without notice. Approximate square footage and options shown in plan may not be included in base price.