

www.visionaryhomes.com



Springhill

3 Elevations Available

-  3,055 Total Sq.Ft.
-  2,215 Finished Sq.Ft.
-  3 - 6 Bedrooms
-  2.5 - 3 Bathrooms
-  2 - 3 Car Garage

With a classic interior and exterior design, you and your family will love The Springhill 2-story floor plan. Featuring 3 beds and 2.5 baths, with an open-concept layout on the main level. Gather with family in the family room, kitchen, or dining area for movie nights, dinners spent together, and cooking. A spacious owner's suite upstairs with an owner's bath and large walk-in closet provide the perfect space to relax and unwind. The staircase open to below brings in additional light to the loft space upstairs, near the bedrooms, with a walk-in closet for storing anything from board games to extra towels and blankets.



Craftsman

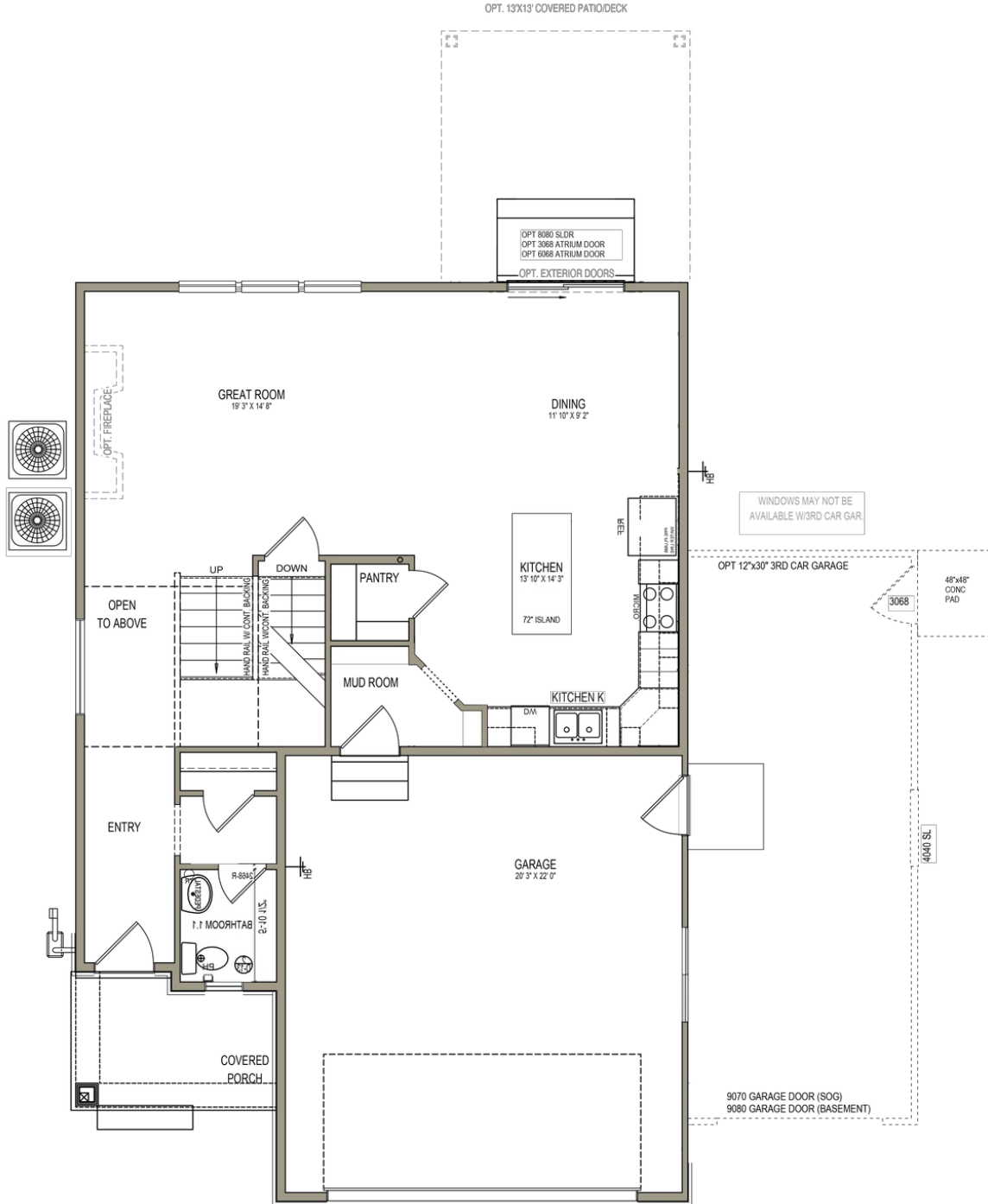


Farmhouse



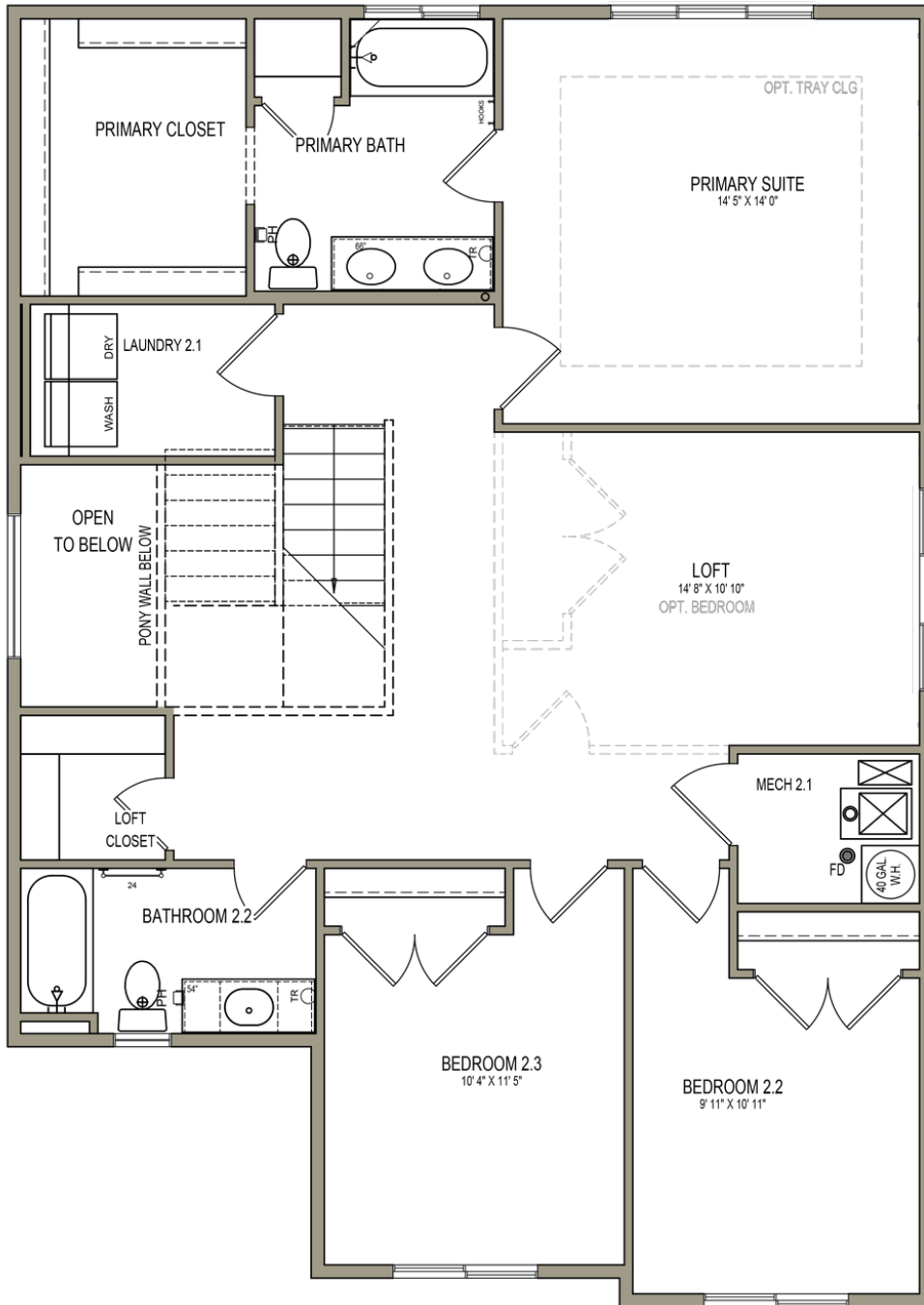
Traditional w/Stucco

MAIN LEVEL W/ UNFINISHED BASEMENT



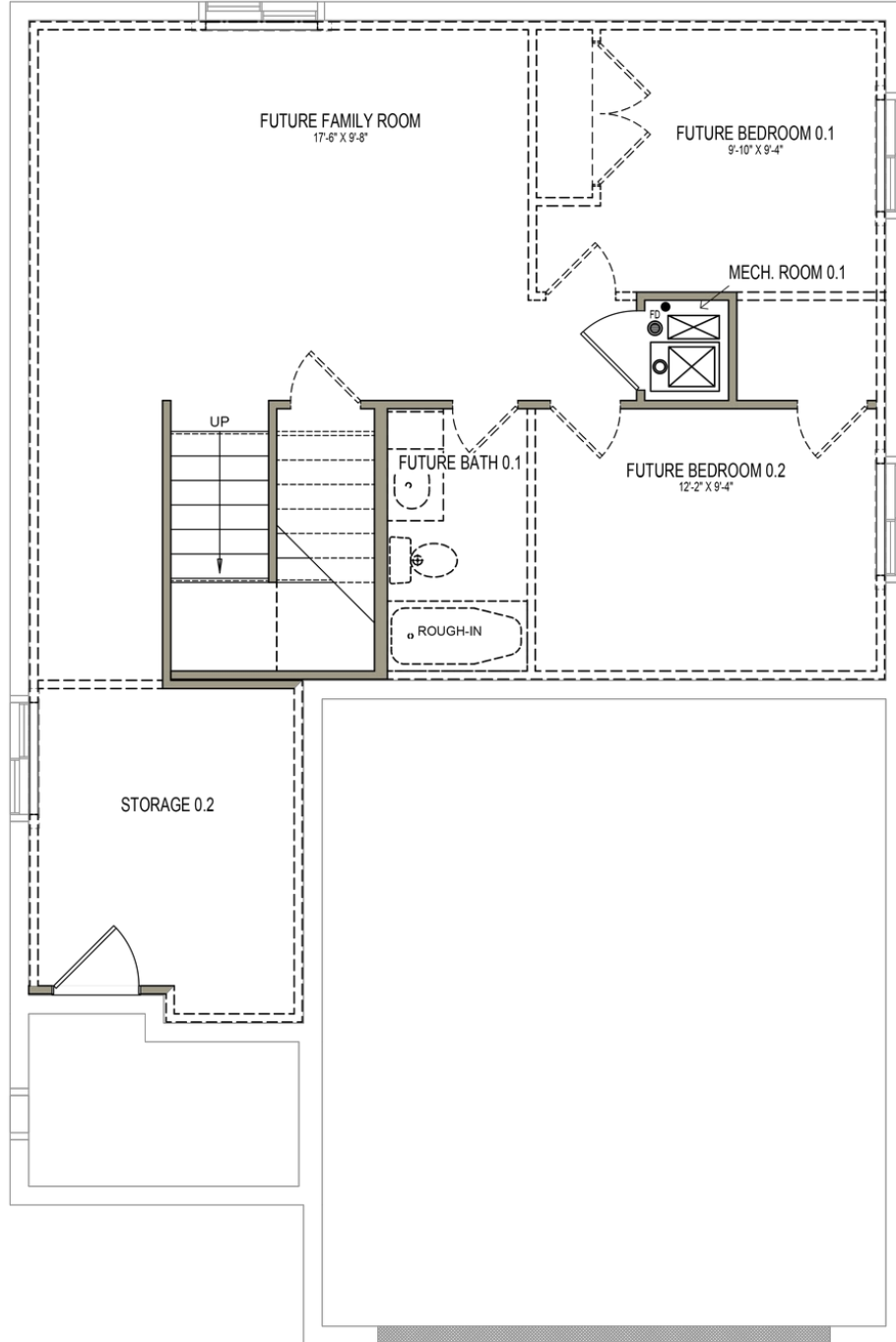
*Visionary Homes reserves the right to change prices without notice.
Approximate square footage and options shown in plan may not be included in base price.

UPPER LEVEL



WINDOWS MAY NOT BE
AVAILABLE W/3RD CAR GAR.

UNFINISHED BASEMENT



*Visionary Homes reserves the right to change prices without notice.
Approximate square footage and options shown in plan may not be included in base price.