

[www.visionaryhomes.com](http://www.visionaryhomes.com)



## Aberdeen

0 Elevations Available

 3,432 Total Sq.Ft.

 2,430 Finished Sq.Ft.

 4 - 7 Bedrooms

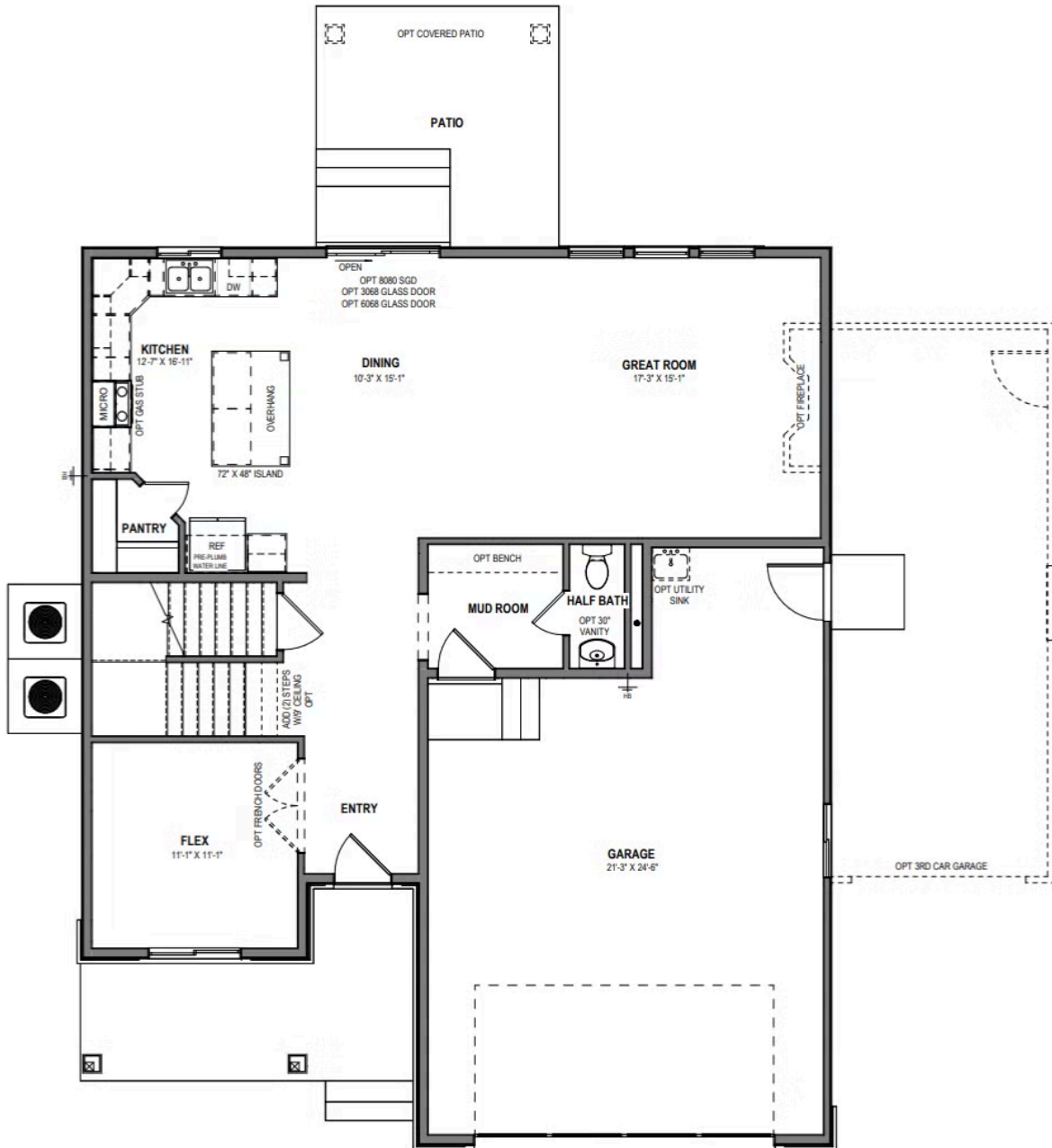
 2.5 - 3 Bathrooms

 2 - 3 Car Garage

With an open concept layout, 4 bedrooms, 2.5 bathrooms, and a 2-car garage, the Aberdeen is perfect for you and your family. The Aberdeen also includes a flex room off the entry, a mudroom and a half bath near garage, as well as walk-in pantry within the kitchen. Upstairs you'll discover a loft space, spacious primary bedroom and bathroom, convenient upstairs laundry room and a full bathroom situated between the secondary bedrooms. You and your family will love each of life's moments in this uplifting, spacious layout!



LEVEL 1

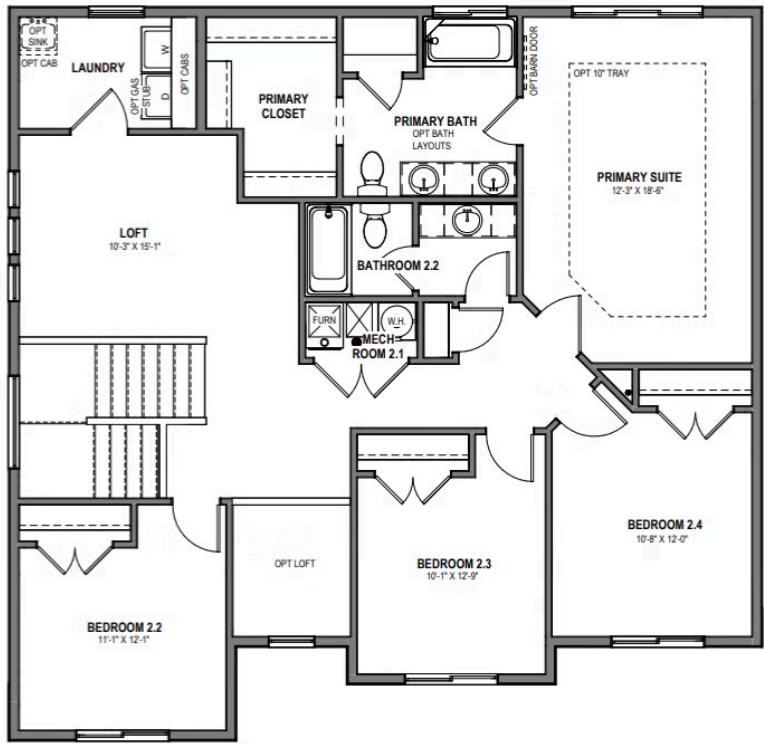


① LEVEL 1 MARKETING PLAN  
1/4" = 1'-0"

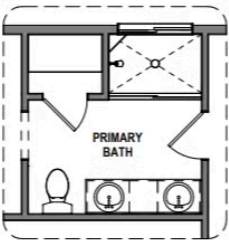


www.visionaryhomes.com

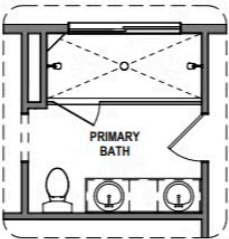
LEVEL 2



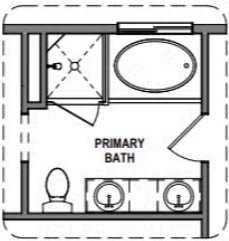
① LEVEL 2 MARKETING PLAN  
1/4" = 1'-0"



② OPT PRIMARY 2 BATH MARKETING PLAN  
1/4" = 1'-0"



③ OPT PRIMARY 3 BATH MARKETING PLAN  
1/4" = 1'-0"



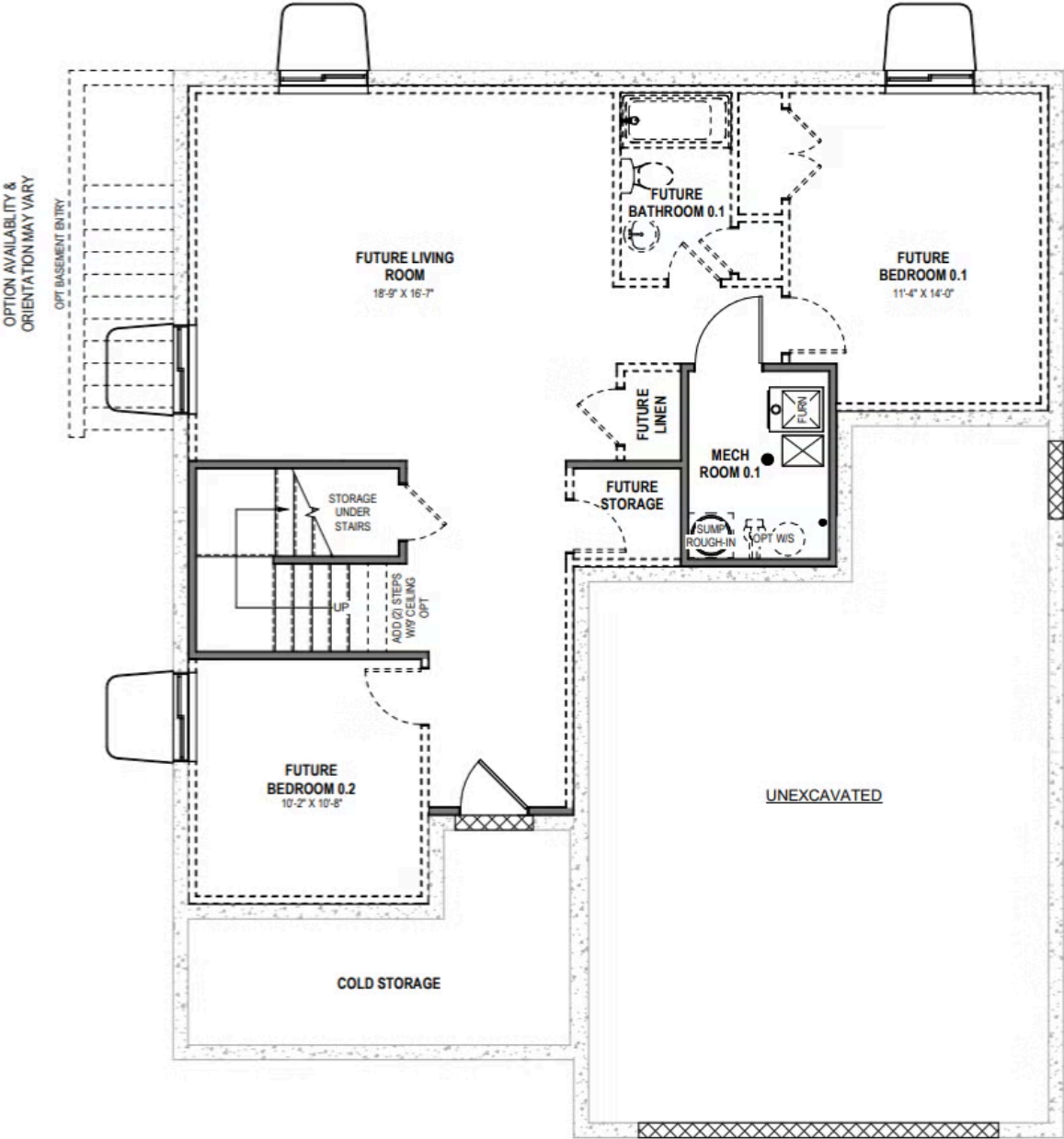
④ OPT PRIMARY 4 BATH MARKETING PLAN  
1/4" = 1'-0"

\*Visionary Homes reserves the right to change prices without notice. Approximate square footage and options shown in plan may not be included in base price.



www.visionaryhomes.com

BASEMENT



1 BASEMENT LEVEL MARKETING PLAN  
1/4" = 1'-0"

\*Visionary Homes reserves the right to change prices without notice. Approximate square footage and options shown in plan may not be included in base price.