


[www.visionaryhomes.com](http://www.visionaryhomes.com)


# Cambridge

3 Elevations Available

 3,614 Total Sq.Ft.

 1,858 Finished Sq.Ft.

 3 Bedrooms

 2 Bathrooms

 2 - 3 Car Garage

The Cambridge floor plan is the perfect upgrade for families looking for more space, with 3 bedrooms and 2 bathrooms. As you step inside, you'll be greeted by grand windows that flood the space with natural light, enhancing the open-concept design of the kitchen, living room, and dining room and creating an inviting ambiance throughout. Meanwhile, the primary bedroom provides a serene retreat complete with a luxurious bath and spacious walk in closet. An unfinished basement provides potential for additional living space. Enjoy an aesthetic and memorable every day life within the beautiful environment of this home.



\*Visionary Homes reserves the right to change prices without notice. Approximate square footage and options shown in plan may not be included in base price.

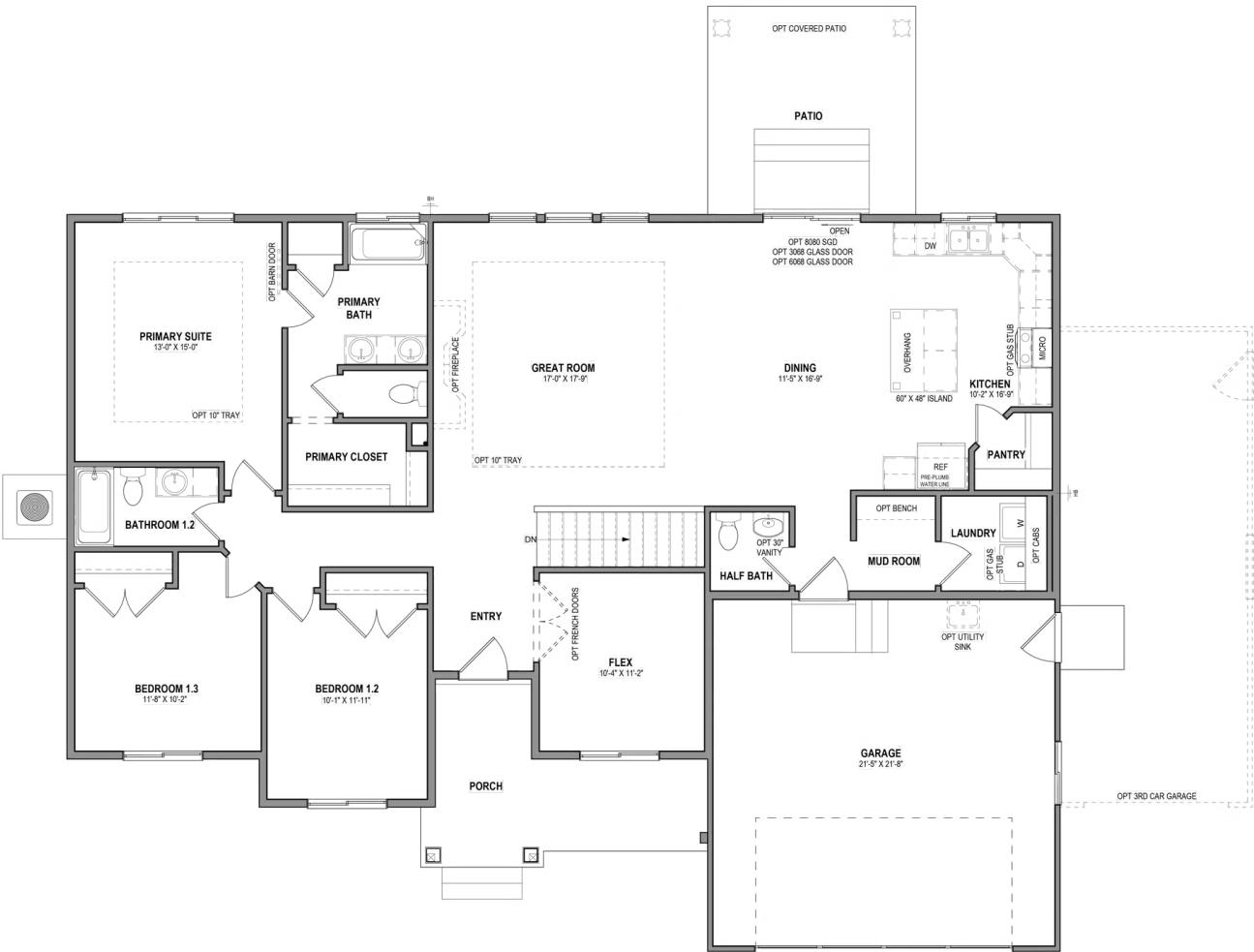
**435.228.4702**  
[visionaryhomes.com](http://visionaryhomes.com)





www.visionaryhomes.com

MAIN LEVEL W/ UNFINISHED BASEMENT

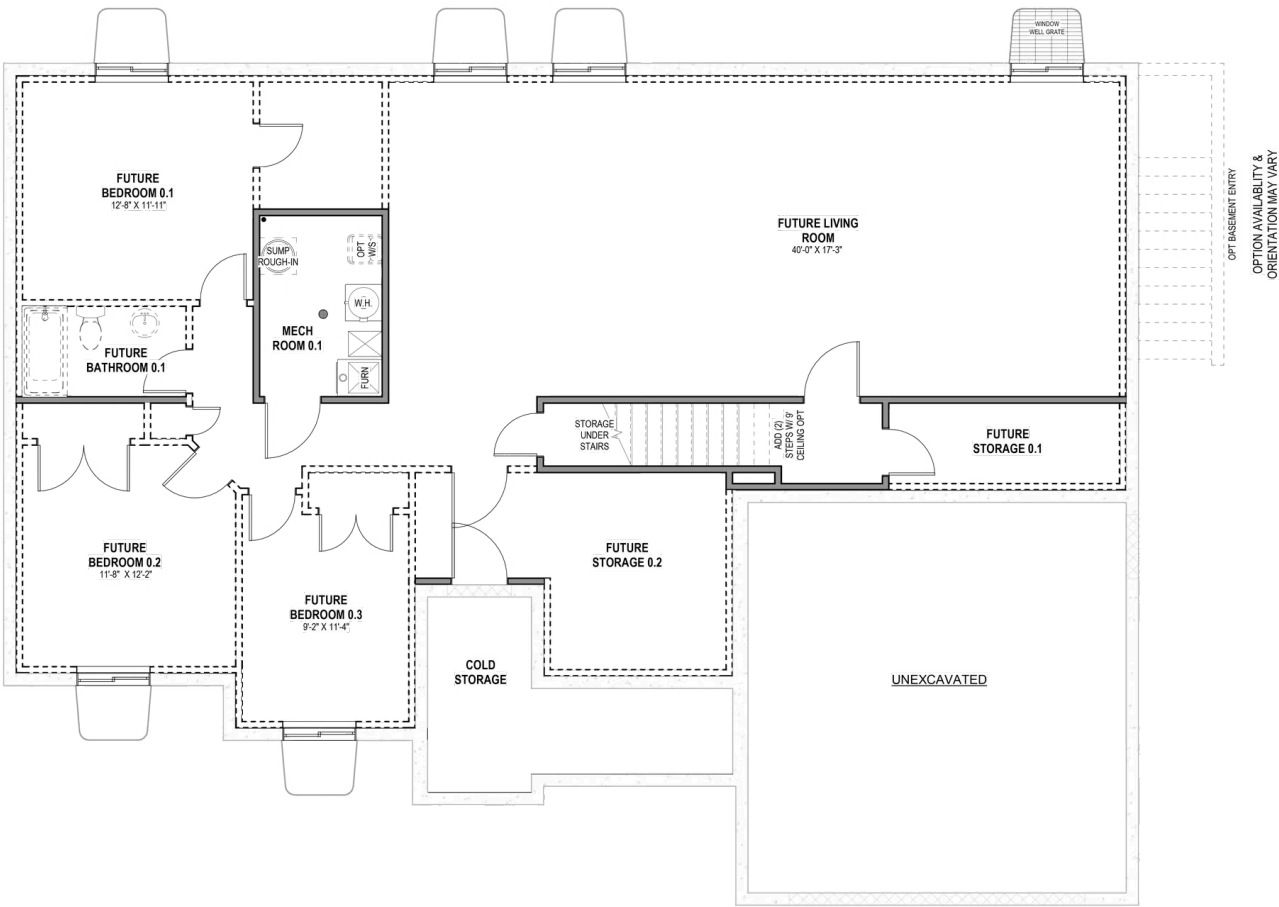


\*Visionary Homes reserves the right to change prices without notice. Approximate square footage and options shown in plan may not be included in base price.



www.visionaryhomes.com

UNFINISHED BASEMENT



\*Visionary Homes reserves the right to change prices without notice. Approximate square footage and options shown in plan may not be included in base price.