

www.visionaryhomes.com


Pendleton

3 Elevations Available

 3,902 Total Sq.Ft.

 2,013 Finished Sq.Ft.

 3 Bedrooms

 2.5 Bathrooms

 2 - 3 Car Garage

The Pendleton rambler floor plan provides ample space for your family with 3 bedrooms and 2 bathrooms. A flex room at the front can be transformed into your dream space—a tranquil home office, music room, or play room, the choice is yours. Just beyond the entry hallway, the home opens up to the spacious family room, kitchen, and dining room with large windows that flood the main level with natural light. And when it's time to unwind, retreat to the expansive primary bedroom, complete with a luxurious walk-in closet and spa-like primary bath. With quality finishes and an unfinished basement that offers potential for future rooms, the Pendleton provides the perfect blend of space, style, and sophistication for families seeking to upgrade to their dream home.



*Visionary Homes reserves the right to change prices without notice. Approximate square footage and options shown in plan may not be included in base price.

435.228.4702
visionaryhomes.com



www.visionaryhomes.com

MAIN LEVEL W/ UNFINISHED BASEMENT

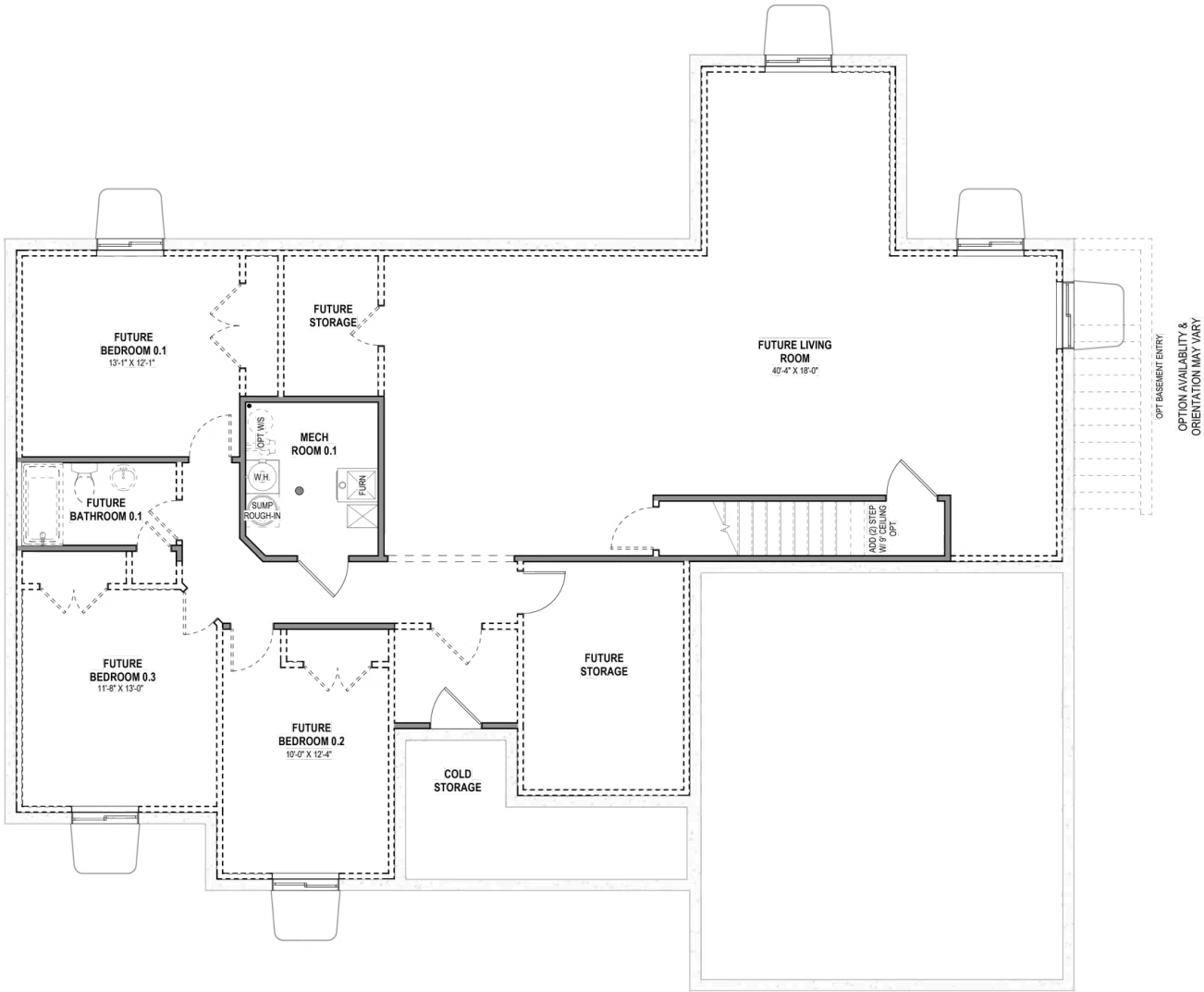


*Visionary Homes reserves the right to change prices without notice. Approximate square footage and options shown in plan may not be included in base price.



www.visionaryhomes.com

UNFINISHED BASEMENT



*Visionary Homes reserves the right to change prices without notice. Approximate square footage and options shown in plan may not be included in base price.