

www.visionaryhomes.com



Remington

0 Elevations Available

 4,426 Total Sq.Ft.

 2,857 Finished Sq.Ft.

 4 - 5 Bedrooms

 2.5 Bathrooms

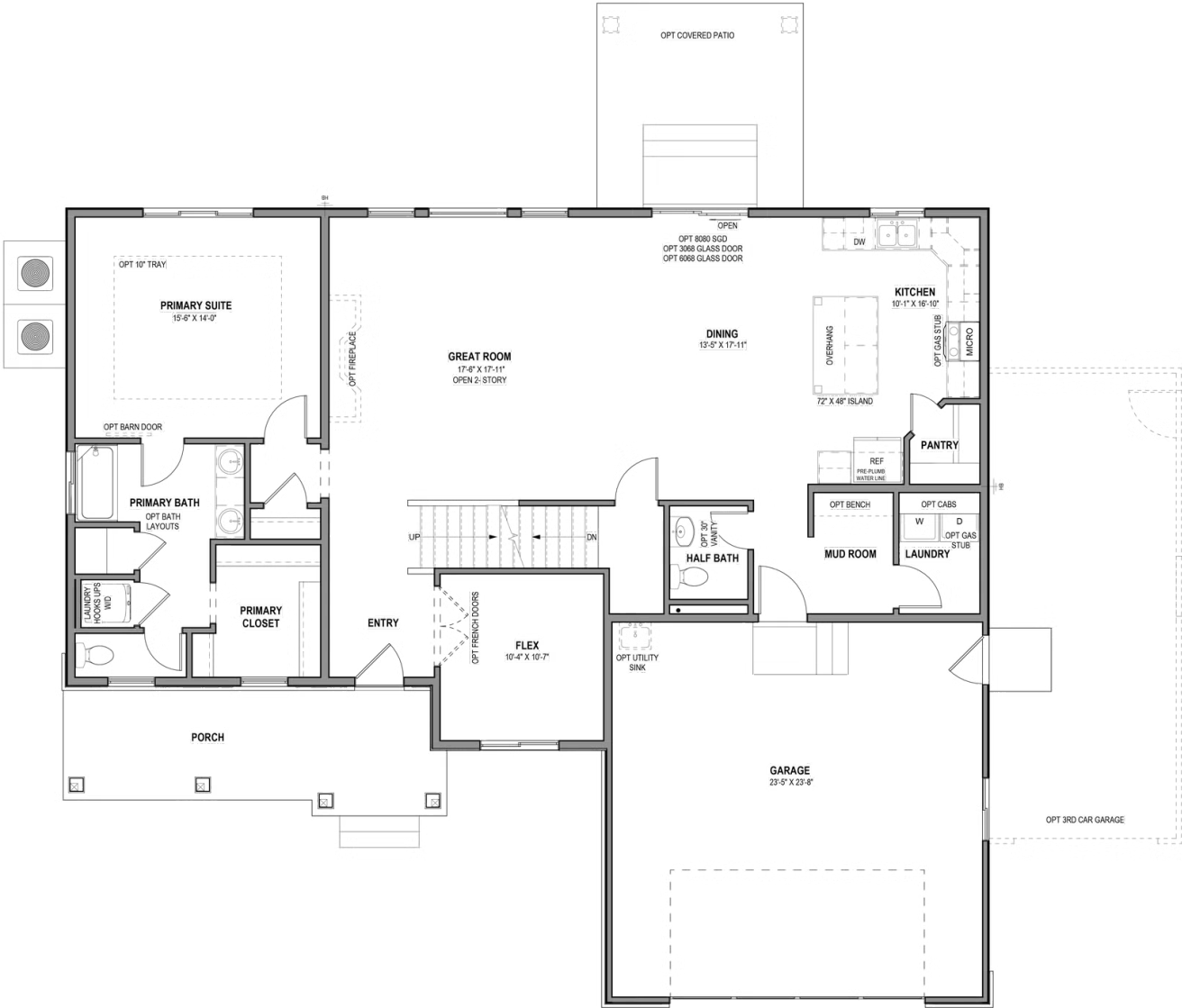
 2 - 3 Car Garage

With 4 bedrooms and 2.5 bathrooms, the Remington 2-story floor plan is perfect for families looking for a high-quality home that will accommodate them for years to come. Just beyond the entryway, floor to ceiling windows illuminate the open-concept main living area. A gourmet kitchen with a walk-in pantry and spacious counters create a deluxe cooking experience. The primary suite brings luxury and relaxation to another level with the primary bath and massive walk-in closet with windows. Looking for additional space for a home office, playroom, or music room? From an open loft upstairs to the unfinished basement, the Remington is full of rooms with the potential to become more.



www.visionaryhomes.com

MAIN LEVEL W/ UNFINISHED BASEMENT

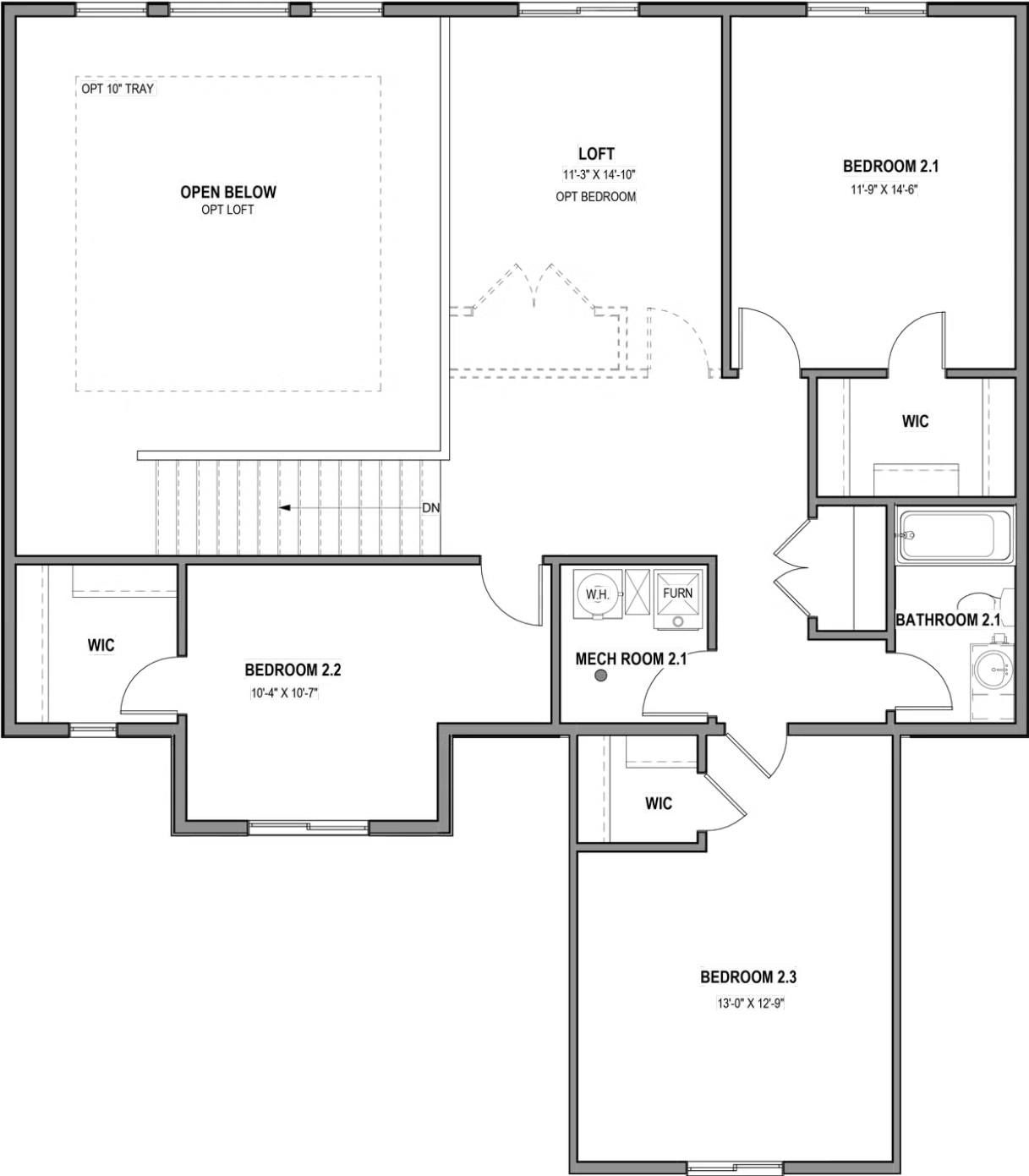


*Visionary Homes reserves the right to change prices without notice. Approximate square footage and options shown in plan may not be included in base price.



www.visionaryhomes.com

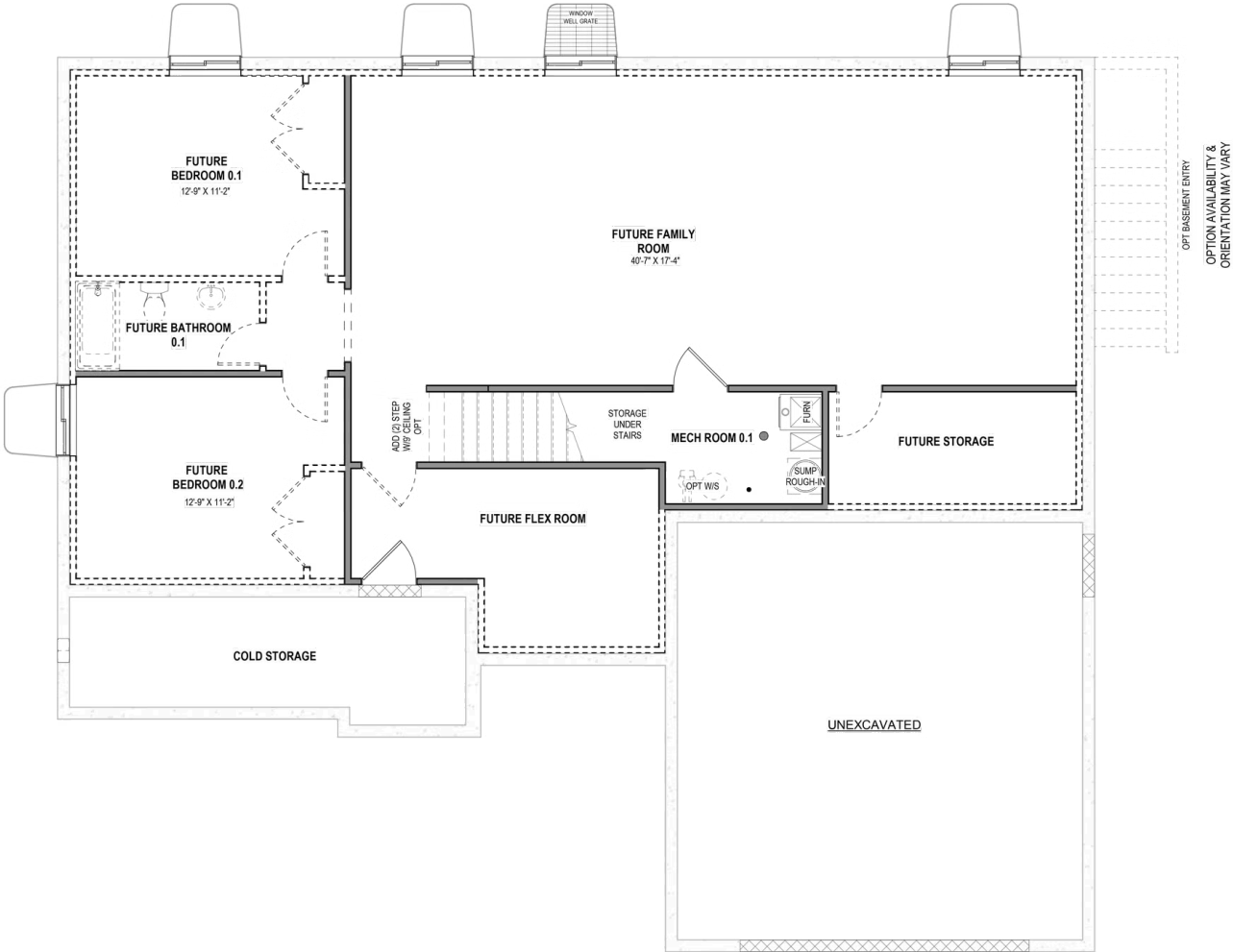
UPPER LEVEL



*Visionary Homes reserves the right to change prices without notice. Approximate square footage and options shown in plan may not be included in base price.



BASEMENT



*Visionary Homes reserves the right to change prices without notice. Approximate square footage and options shown in plan may not be included in base price.